

This form is intended to fulfill the requirements of Chapter A-E 7.08 (3)(a) thru (i) U.S. Public Land Survey Monument Location Record, Wisconsin Administrative Code. Use the reverse side of form for continuation.

**U.S. PUBLIC LAND SURVEY MONUMENT LOCATION RECORD**

Recorders Data

USPLS CORNER: EAST WITNESS M.C. SECTION: 17 TOWNSHIP: 39 NORTH RANGE: 9 EAST

NAME OF WATERWAY FOR M.C. CORNER: DAM LAKE SECTION LINE: SOUTH

~~(CITY/VILLAGE/TOWN)~~ OF: SUGAR CAMP COUNTY OF: ONEIDA

Description of monument found or placed and all other evidence used as the basis for monument location; including monuments and related measurements required if the corner location was reestablished by lost corner proportionate methods. Also indicate name of original surveyor, original survey date and the corner monument, bearing trees, witness or other reference monuments established; including measured bearing and distance ties, from available records.

Found and accepted an old undisturbed 1.25" dia. iron pipe monument with uncapped top 3" above existing grade with a white poly red top Foltz and Associates, Inc. marker stake along west side thereof. I reset the corner with a standard 2" dia. by 30" long aluminum pipe monument with stamped Oneida County cap driven over the iron pipe found to 7" above grade and reset the white poly red top stake found along the east side thereof.

In September 1863, William E. Daugherty/GLO, set a wood post as the original meander corner, at approximately 30 chains west of this witness MC corner location as lake is now a damed impoundment, and marked OBTs: a 10" Hemlock N80°E 12 links and an 8" Hemlock S68°E 7 links, which were not searched for during this recovery.

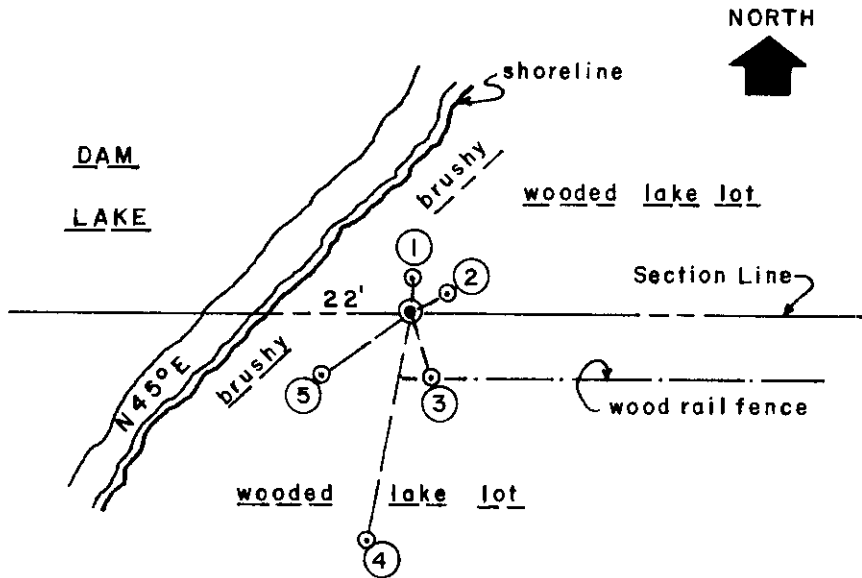
In November 1994, James Will/RLS 1410, also found and accepted the old 1.25" dia. iron pipe monument at this corner location as a witness meander corner per plat of survey filed as C-1122 in Oneida County survey records.

In September 1998, Stuart Foltz/RLS 1170, also found and accepted the old iron pipe at this witness meander corner location per Certified Survey Map filed in Book 8 of Certified Survey Maps Page 2130 in Oneida County records.

I set a standard white poly 'T' corner marker post 6" West of the corner monument.

This recovery completed September 9, 1999; there were no direct witnesses.

Plan view map of monument location with bearing and distance ties to a minimum of four(4) described witness or reference monuments of concrete, natural stone, iron, live bearing trees or equivalent material. If applicable, also show a minimum of two(2) bearing and distance ties to any other monument found and not accepted; including the bearing and distance from the accepted monument.



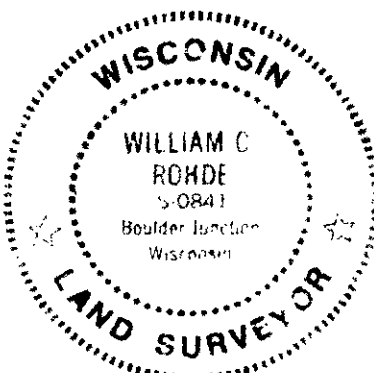
**WITNESS MONUMENT TIES:**

- ① New BT SW 5" Mr of three N05°E 5.62'.
- ② Old BT 15" Bw with upper & lower blaze scars on South face at N62°E 6.22'.
- ③ Old 1.5" dia. iron pipe found with stamped brass cap 8" up at S19°E 10.85'; an erroneous witness MC per common report of local surveyors.
- ④ New BT 9" Hemlock S10°W 36.48'.
- ⑤ New BT North 7" Mr of two S54°W 17.00'.  
Corner falls 22' East of the existing lake shoreline bearing N45°E +/-.

SCALE: 1" = 30'

Unless otherwise indicated, all bearing tree ties are to a .25" dia. by 2.5" long PK nail with a 1.25" dia. steel washer driven into unblazed right face and a .25" dia. by 2.5" long PK nail with a 2" dia. steel washer stamped BT is also driven into unblazed face of bearing tree at DBH; the basis for measured bearings is by compass to nearest degree and all tie distances are measured horizontal by steel tape corrected to nearest 1/100th feet at standard temperature of 68° F.

RLS SEAL:



**LAND SURVEYOR CERTIFICATE:**

I, William C. Rohde, hereby certify that I am duly licensed as a Professional Land Surveyor in the State of Wisconsin; that this USPLS monument location was determined by me and/or under my direct supervision and control; and that this U.S. Public Land Survey Monument Location Record is true and correct to the best of my knowledge and belief.

Signed: *William C. Rohde*  
William C. Rohde RLS 841

		T 39N	
		17	
		R 9E	