

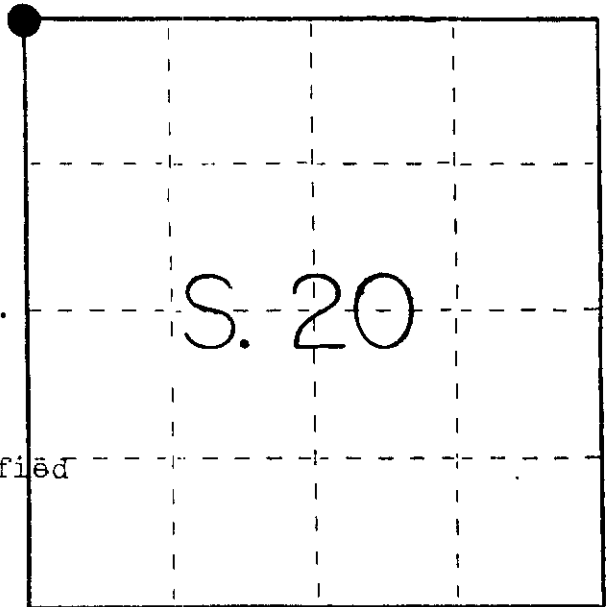
# U. S. PUBLIC LAND SURVEY MONUMENT RECORD

**INSTRUCTIONS:** This record shall show the location of the corner and shall include all of the following nine elements (a through i).

(a) Identify the corner by reference to the U.S. public land survey system.

O = Corner monument restored.

**NW. COR., SECTION 20  
TOWNSHIP 39 NORTH, RANGE 9  
EAST, ONEIDA COUNTY, WIS.**



- Sept. 29, 1863 W. D. Daugherty set orig. cor. to 17-18-19-20 L.T.s w. line 10 N. 63° E 8 lks.; W. Pine 8 S 9 W 7 lks.
- March 1899 E.F. Dorr recovered cor. and ran east to lake
- June 1902 D.H. Vaughan at corner identified by 2 orig. L.T.s nearly gone, made new L.T. N. line stump 24 W 39 N 36 1/2
- Aug. 1923 D.H. Vaughan recovered corner in center of road L.T.s w. line stump 16 N 42 E 38 1/2; Y. line stump 12 S 2 W 58 1/2
- June 1924 D. Burnett recovered corner @ Vaughan's L.T.s
- May 1954 P.R. Vincentsen recovered iron pipe in center of road
- June 1979 James L. Marquardt recovered 1 1/2" iron pipe made the following (con't)

(b) Describe any record evidence, monument evidence, occupational evidence, testimonial evidence or any other material evidence you considered, and whether the monument was found or placed.

witnesses nail in 3" maple N 48° W 53.2; nail in 4" maple S 17° W 40.3; nail in P/P# 3909-19E11 S 65° W 56.4

At this corner I recovered the 1 1/2" iron pipe in center of road, Marquardt's witnesses and one of Vaughans L.T. as shown below.

(c) In the plan view drawing below, provide reference ties to at least 4 witness monuments, or, if the location is within a municipality, to at least 2 witness monuments. (Witness monuments shall be made of concrete, natural stone, iron or other equally durable material.) Describe witness monuments.

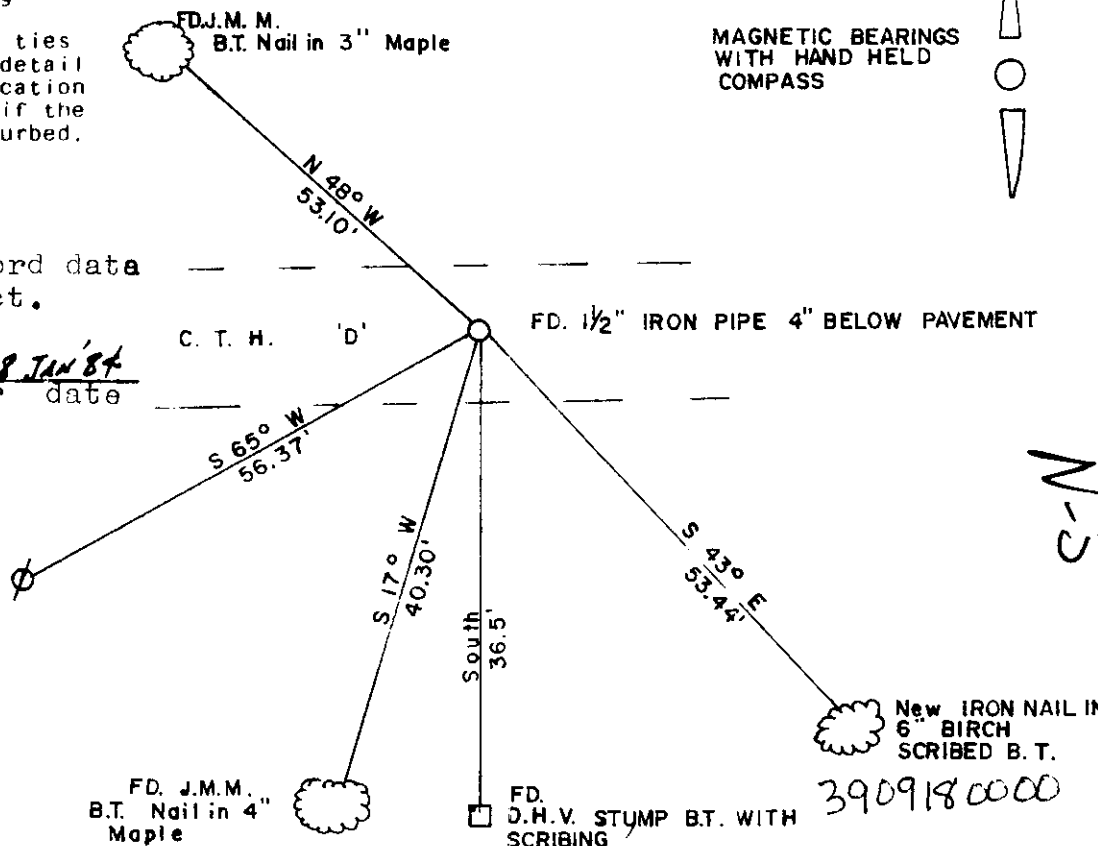
(d) Show a plan view drawing depicting the relevant monuments and reference ties which is sufficient in detail to enable accurate relocation of the corner monument if the corner monument is disturbed. Indicate north.

MAGNETIC BEARINGS WITH HAND HELD COMPASS



Compared with all record data and accepted as correct.

*Robert H. Knaul* 18 JAN 84  
Oneida County Surveyor date



N-5

3909180000

(e) Describe any material discrepancy between the location of the corner as restored or reestablished and the location of that corner as previously restored or reestablished by distance and direction. Show the discrepancy on the plan view drawing under (d), above. Show the distances between the corner as previously restored or reestablished and (1) the corner as restored or reestablished, and (2) to at least 2 of the witness monuments shown on the drawing in (d), above.

found none

(f) Was the corner restored through acceptance of (1) an obliterated evidence location, or, (2) a found perpetuated location?

a found perpetuated location

(g&h) Was the corner reestablished through lost corner proportionate methods? If so, show the method, including the directions and distances to other public land survey corners used as evidence or used for proportioning in determining the corner location?

n/a

REGISTER'S OFFICE )  
Oncida County, Wis. )

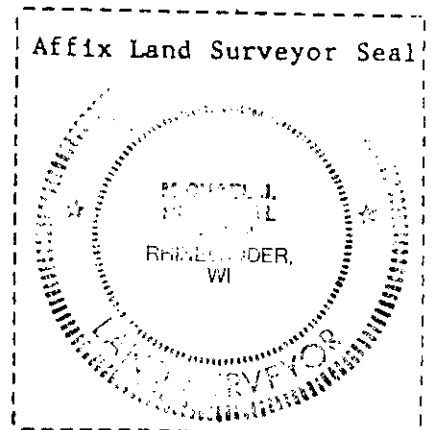
Received for Record the 18th day of

January A.D. 1984 at  
10<sup>00</sup> o'clock A M. and recorded in

Vol. \_\_\_\_\_ on page \_\_\_\_\_

Doris Verage Kuehn  
Register

Affix Land Surveyor Seal



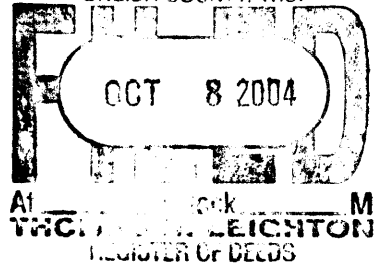
(i) Michael J. Romportl  
(type or print name) certify that the corner location shown on this record was determined by me or under my direction and control and that this U.S. Public Land Survey Monument Record is correct and complete to the best of my knowledge and belief.

Signature

Date

Michael J. Romportl R.L.S. 1624

Genisot & Associates Inc. Rhineland, Wis.



This form is intended to fulfill the requirements of Chapter A-E7.08 (3)(a) thru (i) U.S. Public Land Survey Monument Location Record, Wisconsin Administrative Code. Use the reverse side of form for continuation.

**U.S. PUBLIC LAND SURVEY MONUMENT LOCATION RECORD**

Recorders Data

USPLS CORNER: NW SECTION: 20 TOWNSHIP: 39 NORTH RANGE: 9 EAST  
 NAME OF WATERWAY FOR M.C. CORNER : N/A SECTION LINE: N/A  
 (CITY)(VILLAGE)(TOWN) OF: SUGAR CAMP COUNTY OF: ONEIDA

Description of monument found or placed and all other evidence used as the basis for monument location; including monuments and measurements required if the corner location was reestablished by lost corner proportionate methods. Also indicate name of the original surveyor, original survey date and the corner monument, bearing trees, witness or other reference monuments established, including measured bearing and distance ties, from available survey records.

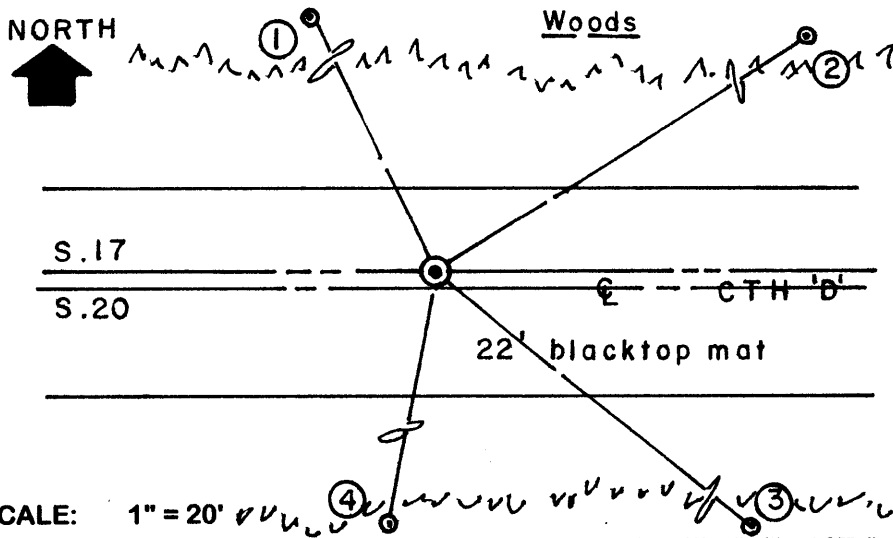
THIS CORNER REREFERENCED WITH APPROVAL OF ONEIDA COUNTY SURVEYOR DUE TO INADEQUATE REMAINING REFERENCES. Found and accepted a Mag Nail head in existing blacktop road mat 18" North of centerline and verified in location from 2 existing record references, a rusted 60d spike in power pole S68°W and a dead 5' high 8" Bw stub S39°E with upper & lower face blazes open & scribed; a very strong magnetic locator reading also likely from record iron pipe below roadway grade, which I did not elect to dig up. SW record 4" Mr BT now a 7" low sawed stump and record NW 3" Mr BT now a 7.5" Mr with no upper blaze scar, but lower blaze fissure shut, is inaccessible for accurate reference measure as other trees in line to corner. Record BT stump by Vaughan South of corner now low rotted stump with faint face scar.

For record history refer to U.S. Public Land Survey Monument Record filed January 1984 by Robert H. Winat, RLS 1040 in Oneida County records.

I also found a 3/4" dia. iron pipe with uncapped top 2" up at N06°E 32.13' with a yellow poly marker stake 7" South and an old fence corner post with fences North & West N24°W 8.0'. An old fence corner post with fences West & South also found 67.5' South of corner in road.

This recovery completed July 13, 2004; there were no direct witnesses other than vehicular traffic.

Plan view map of monument location with bearing and distance ties to a minimum of four(4) described witness or reference monuments of concrete, natural stone, iron, live bearing trees or equivalent material. If applicable, also show a minimum of two(2) bearing and distance ties to any other monument found and not accepted; including the bearing and distance from the accepted monument.



**WITNESS MONUMENT TIES:**

- ① New 8" Mr BT N26°W 42.46' to PK & washer 55" up in right face.
- ② New 6.5" Mr BT N57°E 45.90' to PK & Washer 46" up in right face.
- ③ New 7" Mr BT S41°E 63.24'.
- ④ New 8" Mr BT S10°W 44.12' to PK & washer 51" up in right face.

Standard white poly 'T' marker post set 19.5' North of corner location. I painted old BTs and flagged new BTs & T post blaze orange. I also painted a blaze orange cross onto corner on road mat.

SCALE: 1" = 20'

Unless otherwise indicated, all bearing tree ties are to a .25" dia. by 2.5" long PK nail with a 1.25" dia. steel washer driven into unblazed right face and a .25" dia. by 2.5" long PK nail with a 2" dia. steel washer stamped BT is also driven into unblazed face of bearing tree at DBH; the basis for measured bearings is by compass to nearest degree and all tie distances are measured horizontal by steel tape corrected to nearest 1/100th feet at standard temperature of 68° F.

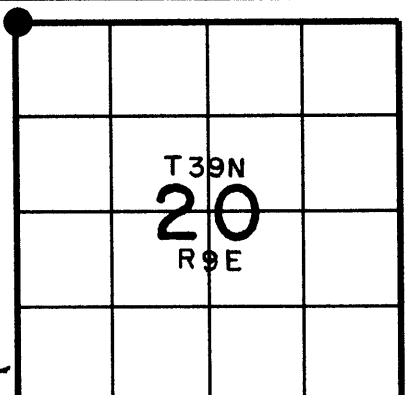
RLS SEAL:



**LAND SURVEYOR CERTIFICATE:**

I, William C. Rohde, hereby certify that I am duly licensed as a Professional Land Surveyor in the State of Wisconsin; that this USPLS monument location was determined by me and/or under my direct supervision and control; and that this U.S. Public Land Survey Monument Location Record is true and correct to the best of my knowledge and belief.

Signed: *William C. Rohde*  
 William C. Rohde RLS 841



SECTION LOCATION MAP  
 INDEX NO. N 5

Date Signed: September 4, 2004

3909180006