

State of Wisconsin

County of Oneida } ss.

I James L. Will do hereby certify that on the 26th day of April 19 85, I found evidence of the South 1/4 corner of Section 18 Township 9 East, Range 9 North, Principal Meridian, as described hereon; and that from this evidence I established a new monument and accessories as described hereon to perpetuate the original location of this corner.

Resident witnesses: Thomas A. Boettcher

U. S. Public Land Survey Monument Record

Index No. N-3

History of original corner establishment:

Original corner was established in the course of the subdivision of T 39 N, R 9 E by William E. Jaugherty in 1863.

Original Bearing Trees: 12" Hem. N 73° W 18 lks. 13" Hem. S 19° E 13 lks.

Description of corner evidence found:

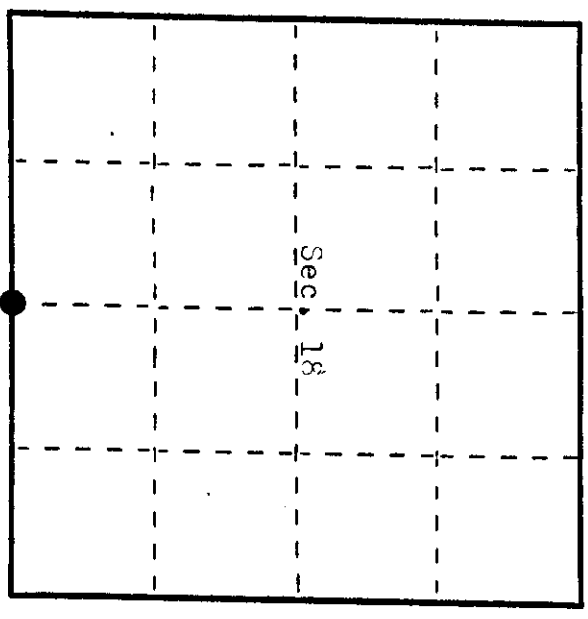
Found 1-1/4" iron pipe next to 4"x4" old wood post on a North-South fence line. Found the following Bearing Trees:

- 9" Oak N 50° E 2.90 feet to nail in side
14" Oak S 71° E 18.71 feet to nail in side
16" Oak N 62° -30' W 23.76 feet to nail in side

Description of monument and accessories I established to perpetuate the original location of this corner.

Set 2"x30" Aluminum magnetic capped monument in place of the 1-1/4" iron pipe and reset wood post 1.0 feet Northeast of the monument.

Made New Bearing Tree: 5" Maple N 26° W 19.26 feet to nail in side See drawing on reverse.



● = Corner monument restored.

Dated at Eagle River Wis., this 2nd day of May 1985

Signature: [Handwritten Signature] Title: Registered Land Surveyor Registration No. 1410 (County Surveyor, Registered Land Surveyor, or other duly authorized official)

Office of Register of Deeds, County of ... I hereby certify that the within instrument was filed in this office for record on the ... day of ... 19... at ... o'clock ... M.

(Register of Deeds)

By: ... Deputy

3909180020

Describe any material discrepancy between the location of the corner as restored or reestablished and the location of that corner as previously restored or reestablished by distance and direction. Show the discrepancy on the plan view drawing under (d), above. Show the distances between the corner as previously restored or reestablished and (1) the corner as restored or reestablished, and (2) to at least 2 of the witness monuments shown on the drawing in (d), above.

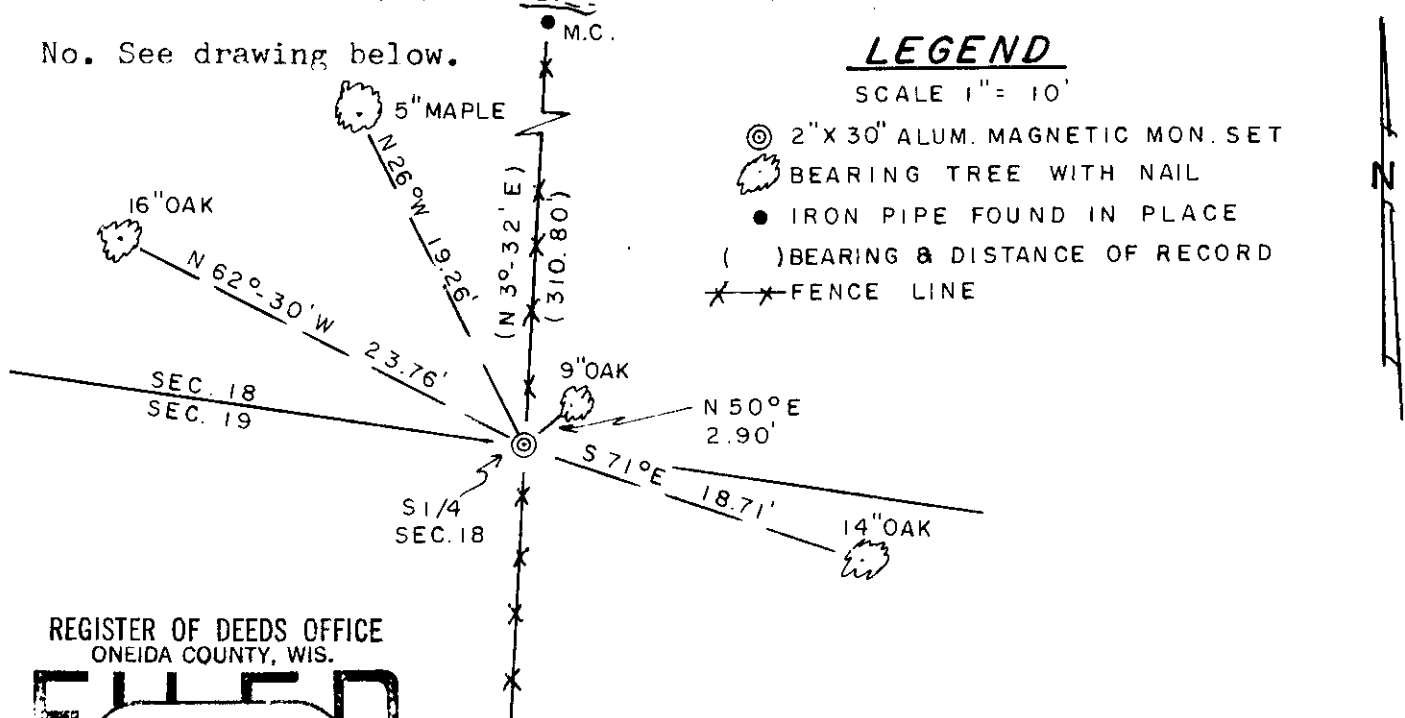
None. See drawing below.

Was the corner restored through acceptance of (1) an obliterated evidence location, or, (2) a found perpetuated location?

Corner was restored through acceptance of a found perpetuated location.

Was the corner reestablished through lost corner proportionate methods? If so, show the method, including the directions and distances to other public land survey corners used as evidence or used for proportioning in determining the corner location?

No. See drawing below.



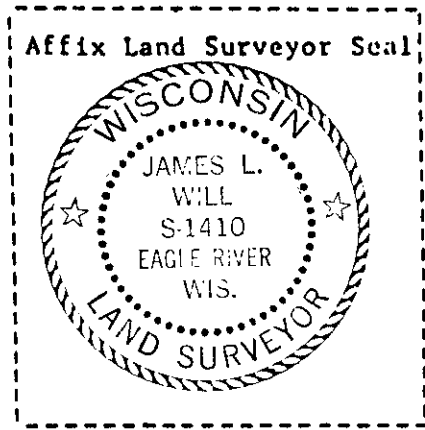
REGISTER OF DEEDS OFFICE
ONEIDA COUNTY, WIS.

FILED

JUL 1 1986

At 8:00 O'Clock P.M.

DORIS VERAGE KUEHN
REGISTER OF DEEDS



I, James L. Will, RLS #1410
(type or print name) certify that the corner location shown on this record was determined by me or under my direction and control and that this U.S. Public Land Survey Monument Record is correct and complete to the best of my knowledge and belief.

James L. Will Signature
May 2nd, 1985 Date