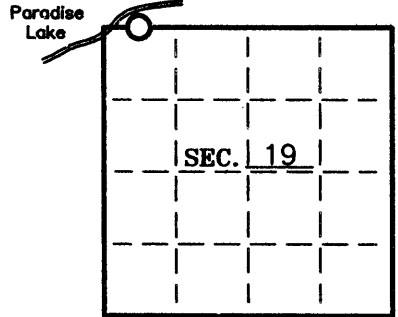


U. S. PUBLIC LAND SURVEY MONUMENT RECORD

Note: This form is intended and designed to fulfill all requirements of Wisconsin Administrative Code-Chapter A-E 7.08 U. S. Public Land Survey Monument Record (3)(a)(b)(c)(d)(e)(f)(g)(h)(i). An additional sheet may be added if necessary to conform with said requirements.

(a) CORNER LOCATION: State Plane Coordinates
Meander corner of Sec. 19 X ---
 Township 39 North Y ---
 Range 9 East Datum Base ---
 Town Sugar Camp County of Oneida



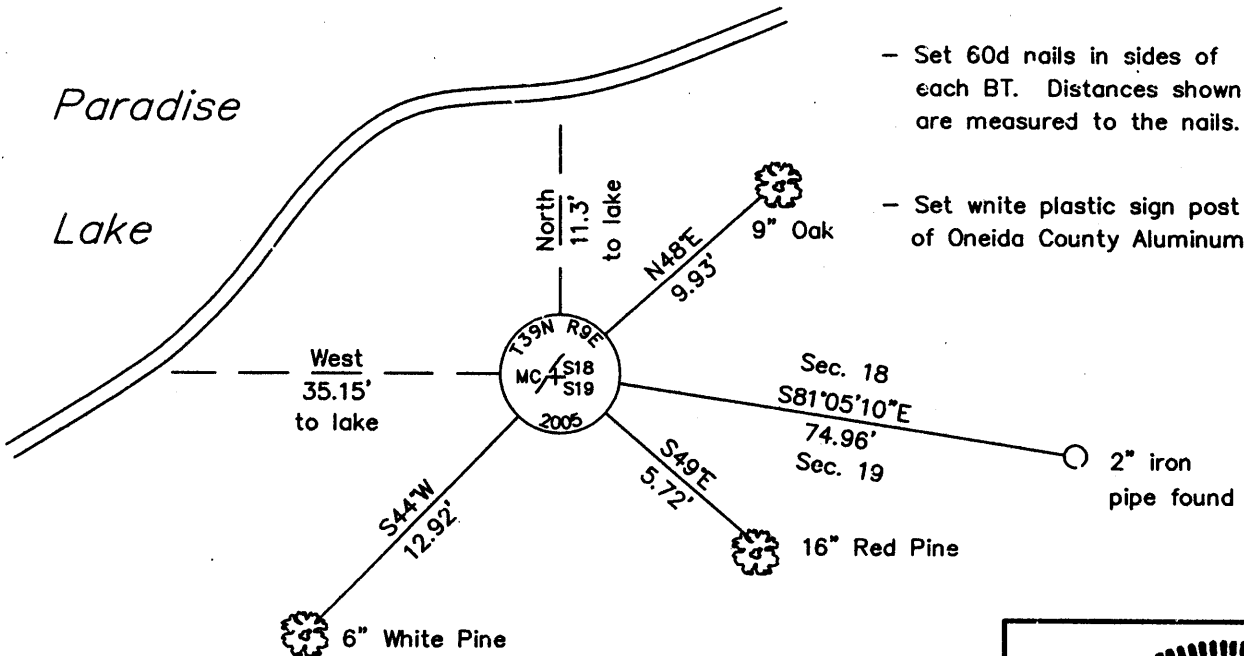
(b) HISTORY OF ORIGINAL CORNER ESTABLISHMENT:
 Original Surveyor: W. Daugherty
 Date of Survey: Commenced 1863
 Completed 1863

Original B.T.'S
 12" Yellow Pine, N34°E, 17 lks
 16" Yellow Pine, S80°E, 24 lks

(b)(f)(g)(h) Description of monument found at this corner and if it was accepted—state all evidence (material—testimonial—occupation—plats—records—other monuments) used as a basis for accepting. If not accepted or if nothing was found state evidence used as basis for establishing location. If reestablished through lost corner proportionate methods indicate all monuments—distances and directions used to establish. Indicate type of monument and sign post found or set.

- 1959— Wincentsen shows an iron pipe at the location on his work in Section 18. He shows a distance of 574.98' between the West 1/16 and the Meander Corner.
- 1964— Northwoods Surveyors surveyed in Government Lots 1 and 2 in Sections 18 and 19 and show an iron pipe at the Meander Corner with a distance of 574.7' between the W 1/16 and the M.C. Bearing trees: Nail set in 11" N. Pine, S47°E, 4.91', nail set in 10" W. Pine, N32°E, 12.1'.
- 1981— R. Winat accepted and used an iron pipe at the Meander Corner location. See Oneida County Surveyor's Map #B1108.
- 2005— I found and accepted a 2" iron pipe for the Meander Corner on the east shore of Paradise Lake and replaced it with an Oneida County Aluminum Monument. I witnessed the corner as shown below.

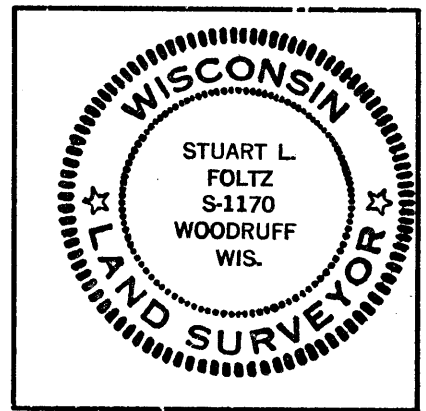
(c)(d)(e) Plan view of corner with ties to at least 4 witness monuments. If in disagreement with previously established corner—show the distances between the two corners and also indicate the ties to the disputed.



- Set 60d nails in sides of each BT. Distances shown are measured to the nails.
- Set white plastic sign post 1' North of Oneida County Aluminum Monument.

(i) I Stuart L. Foltz S-1170 hereby certify that the corner location on this record was determined by me or under my direction and control and that this U.S. Public Land Survey Monument Record is correct and complete to the best of my knowledge and belief.

Stuart L. Foltz Signature
 Foltz and Associates, Inc.
 Date 2/8/2007



INDEX NO. N 1-2

3909 180038