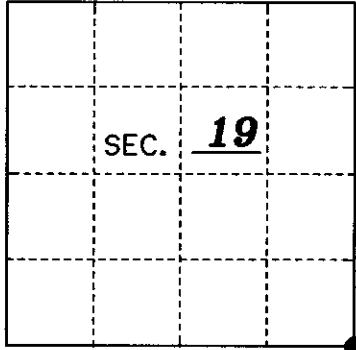


U.S. PUBLIC LAND SURVEY MONUMENT RECORD

Note: This form is intended and designed to fulfill all requirements of Wisconsin Administrative Code, Chapter A-E 7.08 U.S. Public Land Monument Record (3)(a)(b)(c)(d)(e)(f)(g)(h)(i). An additional sheet may be added if necessary to conform with said requirements. Deeds Square

(a) CORNER LOCATION: _____
Southeast Section Corner of Section 19
 Township 39 North, Range 9 East
 Township/City Sugar Camp
 County of Oneida



REGISTER OF DEEDS OFFICE
 ONEIDA COUNTY
 FILED

MAR 07 2017

AT _____ O'CLOCK _____ M
 KYLE J. FRANSON
 REGISTER OF DEEDS

(b) HISTORY OF ORIGINAL ESTABLISHMENT
 Original Surveyor: William E. Daugherty
 Date of Survey: September, 1863
 Original B.T.'s:
 10" Spruce N 61°E 13 lks.
 10" Cedar S 22°W 18 lks.

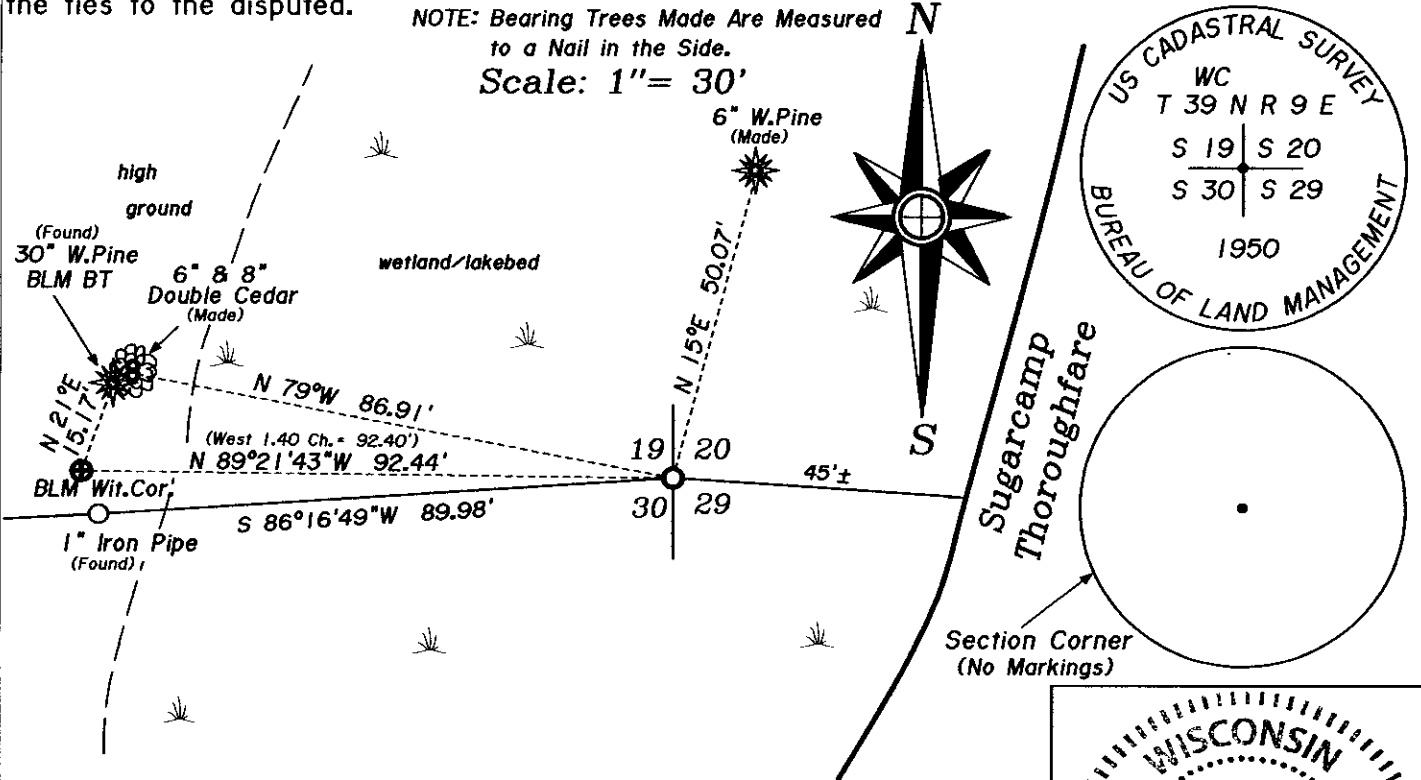
County or State Plane Coordinates
 Northing 240028.29'
 Easting 265085.27'
 Datum Base WCCS (Oneida)

(b)(f)(g)(h) Description of monument found at this corner and if it was accepted, state all evidence (material, testimonial, occupational, plats, records, other monuments) used as a basis for accepting. If not accepted or if nothing was found, state evidence used as basis for establishing location. If reestablished through lost corner proportionate methods, indicate all monuments, distances and directions used to establish. Indicate type of monument and sign post found or set.

August 14 to August 25, 1950: Hugh B. Crawford, Cadastral Engineer for the Bureau of Land Management, in a dependent resurvey of Section 29, T 39 N, R 9 E at the point for the Section corner found a 2" iron pipe with a copper cap with no markings witnessed by a local bearing tree and protruding 24" above the ground. This pipe was recognized by interested persons as properly marking the Section Corner. The local BT is a 18" W.Pine N 80-1/4°W 134.5 lks. He set a iron post 30" long 2" dia. 26" in the ground with a brass cap for a witness corner to the section corner at 1.40 chains West. The same 18" W.Pine BT bears N 18°E 23.5 lks and 10" W.Pine bears S 16°E 20 lks from the Witness corner.

January 3, 2017: I, Thomas A. Boettcher found the unmarked 2" brass capped iron pipe section corner in the marsh up about 10". I also found the BLM witness corner in good condition and the NE W.Pine BT called for in the notes. I measured and found the corner to be in the correct position per our previous survey from 1986. Genisot Survey 8637-E2. I made two new BT's as shown below and set a plastic guard post 4" East of the corner.

(c)(d)(e) Plan view of the corner with ties to at least 4 witness monuments. If in disagreement with previously established corner, show the distances between the two corners and also indicate the ties to the disputed.



(i) I, Thomas A. Boettcher P.L.S. No. 1763
 hereby certify that the corner location on this record was determined by me or under my direction and control and that this U.S. Public Land Survey Monument Record is correct and complete to the best of my knowledge and belief.

Signature Thomas A. Boettcher Date 2/2/2017

WISCONSIN
 THOMAS A. BOETTCHER
 S-1763
 EAGLE RIVER
 WI
 LAND SURVEYOR

Index No. 3909190000 R-S