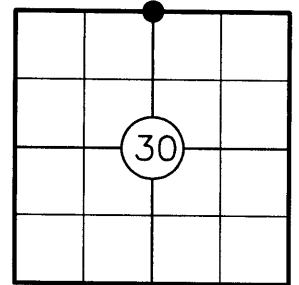
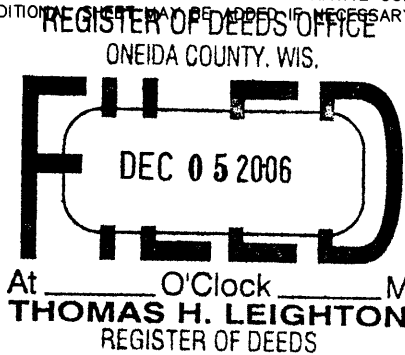


U.S. PUBLIC LAND SURVEY MONUMENT RECORD

NOTE: THIS FORM IS INTENDED AND DESIGNED TO FULFILL ALL REQUIREMENTS OF WISCONSIN ADMINISTRATIVE CODE CHAPTER A-E 7.08 U.S. PUBLIC LAND SURVEY MONUMENT RECORD (3) (a)(b)(c)(d)(e)(f)(g)(h)(i). AN ADDITIONAL NOTE MAY BE ADDED IF NECESSARY TO CONFIRM WITH SAID REQUIREMENTS.

(a) CORNER LOCATION:

N 1/4 CORNER OF SECTION 30
TOWNSHIP 39 NORTH
RANGE 9 EAST
TOWN OF SUGAR CAMP
ONEIDA COUNTY



(b) HISTORY OF ORIGINAL CORNER:

ORIGINAL SURVEYOR: WILLIAM E. DAUGHERTY
DATE OF SURVEY: SEPT. 1863

ORIGINAL BEARING TREES: 8" W. PINE S31°W, 10 LKS.
20" W. PINE N60°E, 22 LKS.

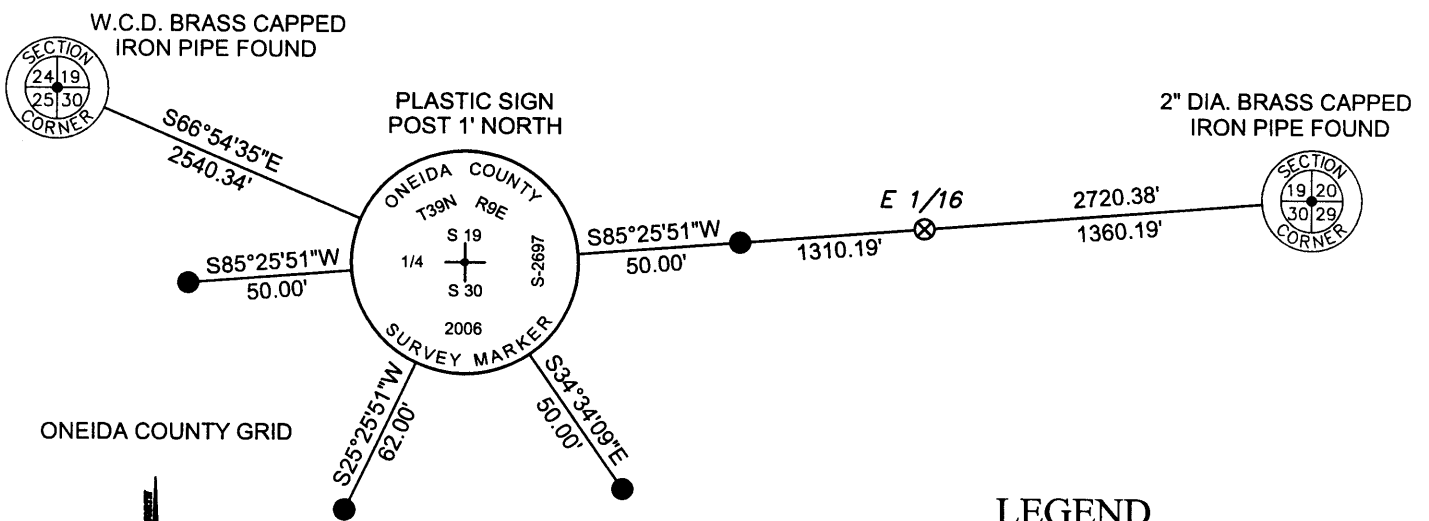
(f)(g)(h) DESCRIPTION OF MONUMENT FOUND AT THIS CORNER AND IF IT WAS ACCEPTED STATE ALL EVIDENCE (MATERIAL, TESTIMONIAL, OCCUPATIONAL, PLATS, RECORDS, OTHER MONUMENTS) USED AS A BASIS FOR ESTABLISHING LOCATION. IF REESTABLISHING THROUGH LOST CORNER PROPORTIONATE METHODS, INDICATE ALL MONUMENTS, DISTANCES, AND DIRECTIONS USED TO ESTABLISH. INDICATE TYPE OF MONUMENT AND SIGN POST FOUND OR SET.

1863: WILLIAM E. DAUGHERTY SET THE 1/4 POST AT 40.45 CHAINS FROM THE NORTHWEST SECTION CORNER.

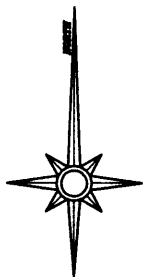
1949: F.R. WINCENTSEN NOTES AN IRON PIPE AND THE REMAINS OF THE ORIGINAL GOV'T BT'S DURING HIS SUBDIVISION OF THE EAST 1/2 OF SECTION 30 AS LISTED IN HIS FIELD NOTES.

2006: I FOUND NO EVIDENCE OF WINCENTSEN'S IRON PIPE OR BT'S AS THIS IS NOW A CULTIVATED FIELD. I POSITIONED THE CORNER USING THE NORTHEAST CORNER OF SECTION 30 AND WINCENTSEN'S E 1/16 CORNER. I MADE ACCESSORIES AS SHOWN BELOW.

(c)(d)(e) PLAN VIEW OF CORNER WITH TIES TO AT LEAST FOUR WITNESSES. IF IN DISAGREEMENT WITH PREVIOUSLY ESTABLISHED CORNER, SHOW THE DISTANCES BETWEEN THE TWO CORNERS AND ALSO INDICATE THE TIE TO THE DISPUTED CORNER.

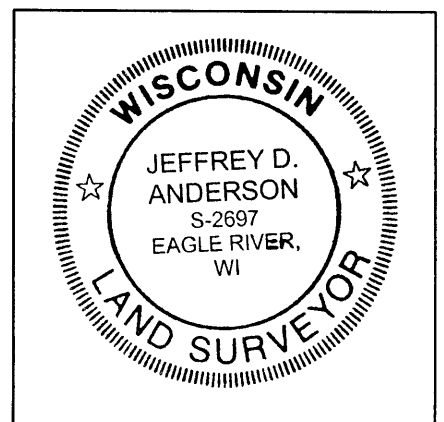


ONEIDA COUNTY GRID



LEGEND

- 1-1/4" DIA. IRON PIPE SET
- ⊗ 1" DIA. IRON PIPE FOUND



INDEX NO. B 3

I, JEFFREY D. ANDERSON, REGISTERED LAND SURVEYOR NO. 2697, HEREBY CERTIFY THAT THE CORNER LOCATION ON THIS RECORD WAS REFERENCED BY ME OR UNDER MY DIRECTION AND CONTROL AND THAT THIS U.S. PUBLIC LAND SURVEY MONUMENT RECORD IS COMPLETE TO THE BEST OF MY KNOWLEDGE AND BELIEF.

Jeffrey D. Anderson 11/30/06
SIGNATURE DATE

3909190020

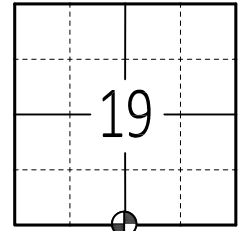
U.S. PUBLIC LAND SURVEY MONUMENT RECORD

ONEIDA COUNTY, WISCONSIN

COUNTY INDEX NO: R 3
 WI CORNER IDENTIFICATION NO: 43909190020

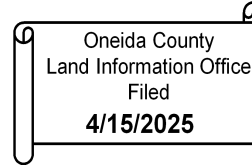
MONUMENT TYPE: 24" ALUMINUM DRIVABLE CAPPED MONUMENT
 HORIZONTAL DATUM: NAD 83 ADJUSTMENT 2011
 (WCCS) ONEIDA COUNTY COORDINATE: N= 239811.829 E= 262373.404
 DATE OF SURVEY: 4-8-2025
 SURVEY PARTY: T. RUTZEN & W. STROMBOM

SECTION 19
 TOWNSHIP 39
 RANGE 9



(INDICATE CORNER BY)

FOUND SET RE-SET RE-TIED



BASIS FOR MONUMENT LOCATION

(BRIEF DESCRIPTION OF CORNER HISTORY)

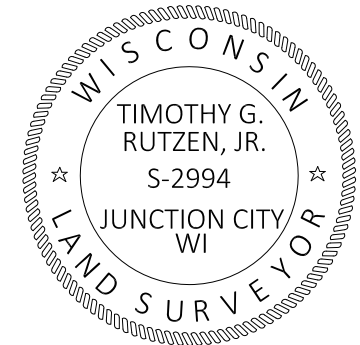
1863: WILLIAM E. DAUGHERTY SET THE 1/4 POST AT 40.45 CHAINS FROM THE NORTHWEST SECTION CORNER OF SECTION 30.

1949: F. R. WINCENTSEN NOTES AN IRON PIPE AND THE REMAINS OF THE ORIGINAL GOV'T BT'S DURING HIS SUBDIVISION OF THE EAST 1/2 OF SECTION 30 AS LISTED IN HIS FIELD NOTES.

2006: PLS 2697, J. ANDERSON FOUND NO EVIDENCE OF F. R. WINCENTSEN'S IRON PIPE HE NOTED OR THE BT'S AS THIS IS NOW A CULTIVATED FIELD. HE POSITIONED AND SET THE CORNER USING THE NORTHEAST CORNER OF SECTION 30 AND WINCENTSEN'S 1/16TH CORNER AND TIED OUT CORNER.

2025: I CALCULATED THE POSITION MULTIPLE WAYS AND SEARCHED, BUT FOUND NO EVIDENCE OF THE CORNER PLS 2697 SET OR THE TIES. BEING THAT THIS IS A CONTINUED CULTIVATED FIELD, IT IS BELIEVED THAT THE CORNER AND TIES HAVE BEEN OBLITERATED. I POSITIONED AND SET THE NEW CORNER USING THE SAME METHOD AS PLS 2697. I SURVEYED THE LONG STANDING MONUMENTED SOUTHEAST 1/4 LINE FROM PRIOR SURVERYS AND DISTANCES SHOWN ON PRIOR TIE SHEET FROM PLS 2697. USING THIS METHOD, IT AGREED WELL WITH ALL PAST DOCUMENTED DATA. NOTE: THE IRON PIPE MONUMENTING THE 1/16TH CORNER TO THE EAST APPEARS TO ALSO HAVE BEEN OBLITERATED AND COULD ONLY BE CALCULATED.

SEAL:



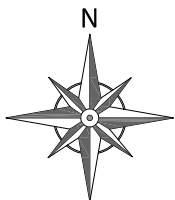
DATA SHOWN HERE ON THIS TIE SHEET IS CORRECT AND COMPLETE TO THE BEST OF MY KNOWLEDGE AND BELIEF

SIGNATURE:
 TIMOTHY G. RUTZEN, PLS 2994

DATE: 4/15/25

PLAN VIEW

NOTE: SET ALUMINUM MONUMENT APPROXIMATELY 16" UNDER FIELD SURFACE TO PREVENT DISTURBANCE FROM FUTURE FIELD WORK.



LEGEND

- SECTION/QUARTER CORNER
- SET 0.75" X 30" IRON BAR, 1.50lbs/ft
- FOUND 1.00" O.D. IRON PIPE
- (XX.XX) RECORD BEARING OR DISTANCE

