

U.S. PUBLIC LAND SURVEY MONUMENT RECORD

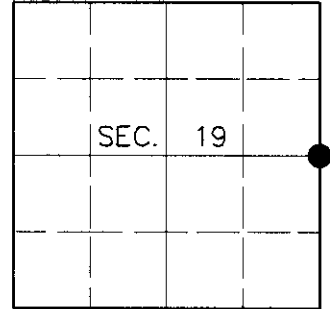
Note: This form is intended and designed to fulfill all requirements of Wisconsin Administrative Code, Chapter A-E 7.08, U.S. Public Land Survey Monument Record (3)(a)(b)(c)(d)(e)(f)(g)(h)(i). An additional sheet may be added if necessary to conform with said requirements.

(a) CORNER LOCATION

East ¼ Corner of Section 19
 Township 39 North
 Range 9 East
 Town of Sugar Camp

State Plane Coordinates

X
 Y
 Datum
 County of Oneida



(b) HISTORY OF ORIGINAL CORNER ESTABLISHMENT

Original Surveyor: William E. Daugherty

Original Bearing Trees:

Date of Survey: Commenced Sept. 22, 1863
 Completed Sept. 29, 1863

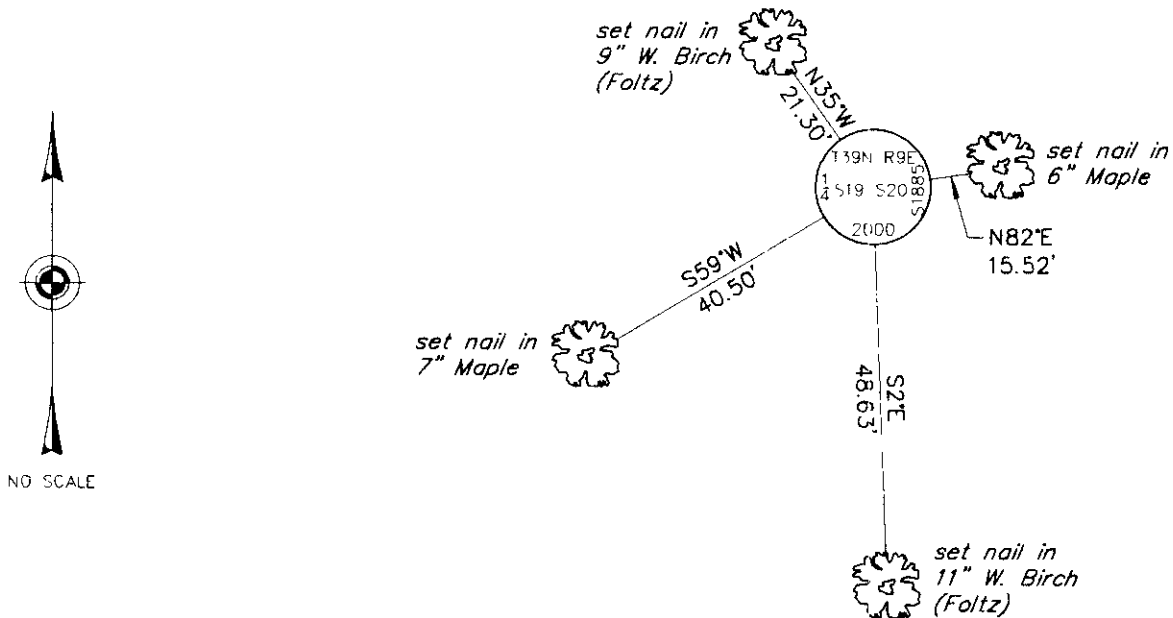
Fir 8 N24°E, 6 links
 Birch 12 S88°W, 15 links

(b)(f)(g)(h) Description of monument found at this corner and if it was accepted, state all evidence (material, testimonial, occupational, plats, records, other monuments) used as a basis for accepting. If not accepted or if nothing was found, state evidence used as basis for establishing location. If reestablished through lost corner proportionate methods, indicate all monuments, distances and directions used to establish. Indicate type of monument and sign post found or set.

April 5, 1978: Recorded plat of "Boardwalk Park" by Stuart L. Foltz, Registered Land Surveyor. Foltz indicates corner is marked by a 1-¼" dia. iron rod with the following bearing trees: 12" W. Birch S3°E, 48.3 feet; 10" W. Birch N38°W, 21.0 feet.

June 28, 2000: I found and accepted a 1-¼" dia., 30" long iron rod with broken off wood post. I replaced the rod with a 2-½" dia., 30" long aluminum pipe with 3-¼" dia. Oneida County aluminum cap 6" above grade and marked as shown below. I established accessories as shown below and set a plastic sign post Northeast, 1 foot.

(c)(d)(e) Plan view of corner with ties to at least 4 witness monuments. If in disagreement with previously established corner, show the distances between the two corners and also indicate the ties to the disputed corner.



(i) I, Jeffrey W. Austin, Registered Land Surveyor S-1885, hereby certify that the corner location on this record was determined by me or under my direction and control and that this U.S. Public Land Survey Monument Record is correct and complete to the best of my knowledge and belief.

Signature: *[Handwritten Signature]* Date: 7 23 00



INDEX NO. P-5

3909192000