

U.S. PUBLIC LAND SURVEY MONUMENT RECORD

Note: This form is intended and designed to fulfill all requirements of Wisconsin Administrative Code, Chapter A-E 7.08 U.S. Public Land Survey Monument Record (3) (a) (b) (c) (d) (e) (f) (g) (h) (i). An additional sheet may be added if necessary to conform with said requirements.

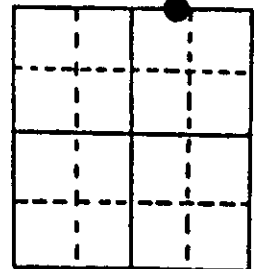
(a) Corner location: Township 39 North Corner: North Section Line

Section 28 Range 9 East Original Surveyor: William Daugherty

Town/City/Village Sugar Camp

Original B.T.'s: 10" Bw S89°W 10 lks
12" Bw N48°E 13 lks

County Oneida

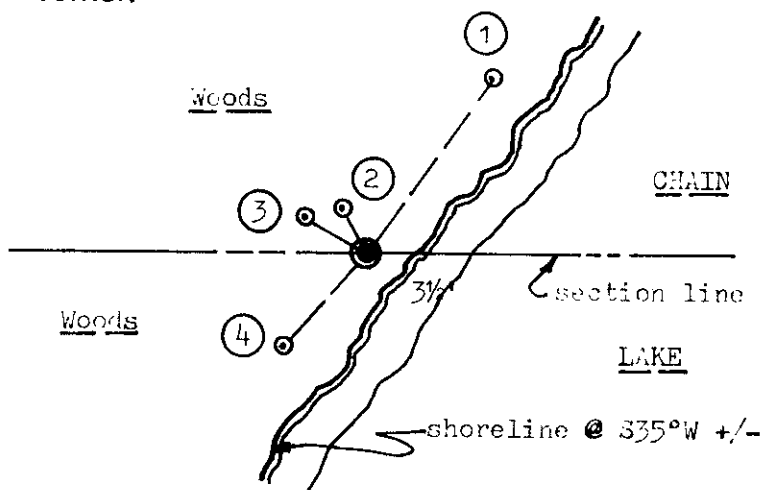


Original Survey Date: September 1863 ● Location

(b) (f) (g) (h) Description of monument found at this corner and if it was accepted, state all evidence (material, testimonial, occupational, plats, records, other monuments) used as a basis for accepting. If not accepted or if nothing was found, state evidence used as basis for establishing location. If reestablished through lost corner proportionate methods, indicate all monuments, distances and directions used to establish. Indicate type of monument found or set and sign post.

I found and accepted a very old 1 1/4" dia. iron pipe well point, 23" long and loose in bank of lake, at this corner location per previous records. I carefully removed the old well point and replaced its verified location with a standard 2" dia. by 30" long aluminum Borntsen monument with stamped Oneida County cap 9" above existing grade, and erected a chain of several nearby rocks around the base of the monument. I left the old well point flat on grade nearby and set a standard white poly 'T' corner marker post 16" East of the new corner monument. All original GLO survey corner and BT evidence is apparently gone as no record recovery of same since 1949. In 1949, County Surveyor Wincentzen noted the well point at this corner and new BTs, a 10" Bw S18°E 5.9' and a 12" Aspen N12°E 14.5', both now gone, per Plat of Survey filed as C888 in Oneida County surveyor records. In 1952, Ilg also found and accepted the well point at the wit MC, which he noted at 60.17 chains East of the NW section corner and 23.58 chains West of the NE section corner in the lake per his section resurvey notes and plat on file in Wisconsin DNR records at Trout Lake office; Ilg noted no BTs. In 1988, Will of Jenicot & Associates, Angle River, Wisconsin, also found and accepted the old well point per Plat of Survey filed as B2012 in Oneida County surveyor records. This recovery completed 11-07-97; there were no witnesses.

(c) (d) (e) Plan view of corner with ties to at least 4 witness monuments. If in disagreement with previously established corner, show the distances between the two corners and also indicate the ties to the disputed corner.



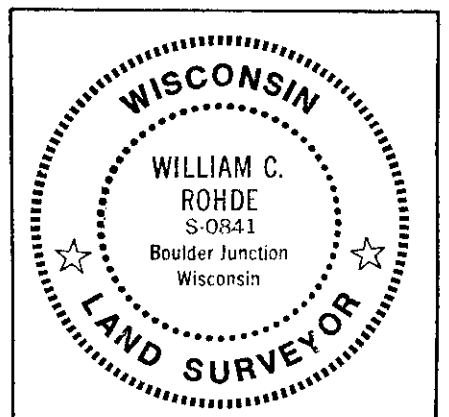
Witness Monument Ties:

- ① New BT 9" Bw N35°E 22.34'.
- ② New BT 14" Pr N28°W 5.91'.
- ③ New BT 7" Pw N58°W 7.86'.
- ④ New BT 10" Bw tipped 30°+ East at S43°W 13.16'.

Note: See Plat of Survey B2012 in Oneida records for other ties NE and SW to iron pipe monuments by survey.

Unless otherwise indicated, all BT witness monument ties are to a 1/4" dia. by 2.5" long PK nail with 1.25" dia. steel washer set in unblazed right face bark; and a PK nail with 2" dia. steel washer stamped BT also set in unblazed front face bark of each BT at DBH. All previous corner recovery notes from Wisconsin DNR and/or Oneida County survey records.

Scale: 1" = 20'



(i) I, William C. Rohde, RLS 841
(type or print name) certify that the corner location on this record was determined by me or under my direction and control and that this U.S. Public Land Survey Monument Record is correct and complete to the best of my knowledge and belief.

William C. Rohde
Signature

Nov. 09, 1997
Date

Index No. R 11-12

U.S. PUBLIC LAND SURVEY MONUMENT RECORD ADDENDUM

Note: This form is intended and designed to fulfill all requirements of the Wisconsin Administrative Code, Chapter A-E 7.08 U.S. Public Land Monument Record (3)(a)(b)(c)(d)(e)(f)(g)(h)(i). An additional sheet may be added if necessary to conform with said requirements.

(a) CORNER LOCATION:

Wit. Meander Corner north line of Section 28 North:
Township 39 North East:
Range 9 East Datum: NAD
Town of Sugar Camp GNSS Method:
County of Oneida GNSS Control:

(RECORDING AREA)

SECTION 28

				Chain Lake

(b) HISTORY OF ORIGINAL CORNER ESTABLISHMENT

Original Surveyor:
Date of Survey: Commenced
Completed
Original B.T.'S

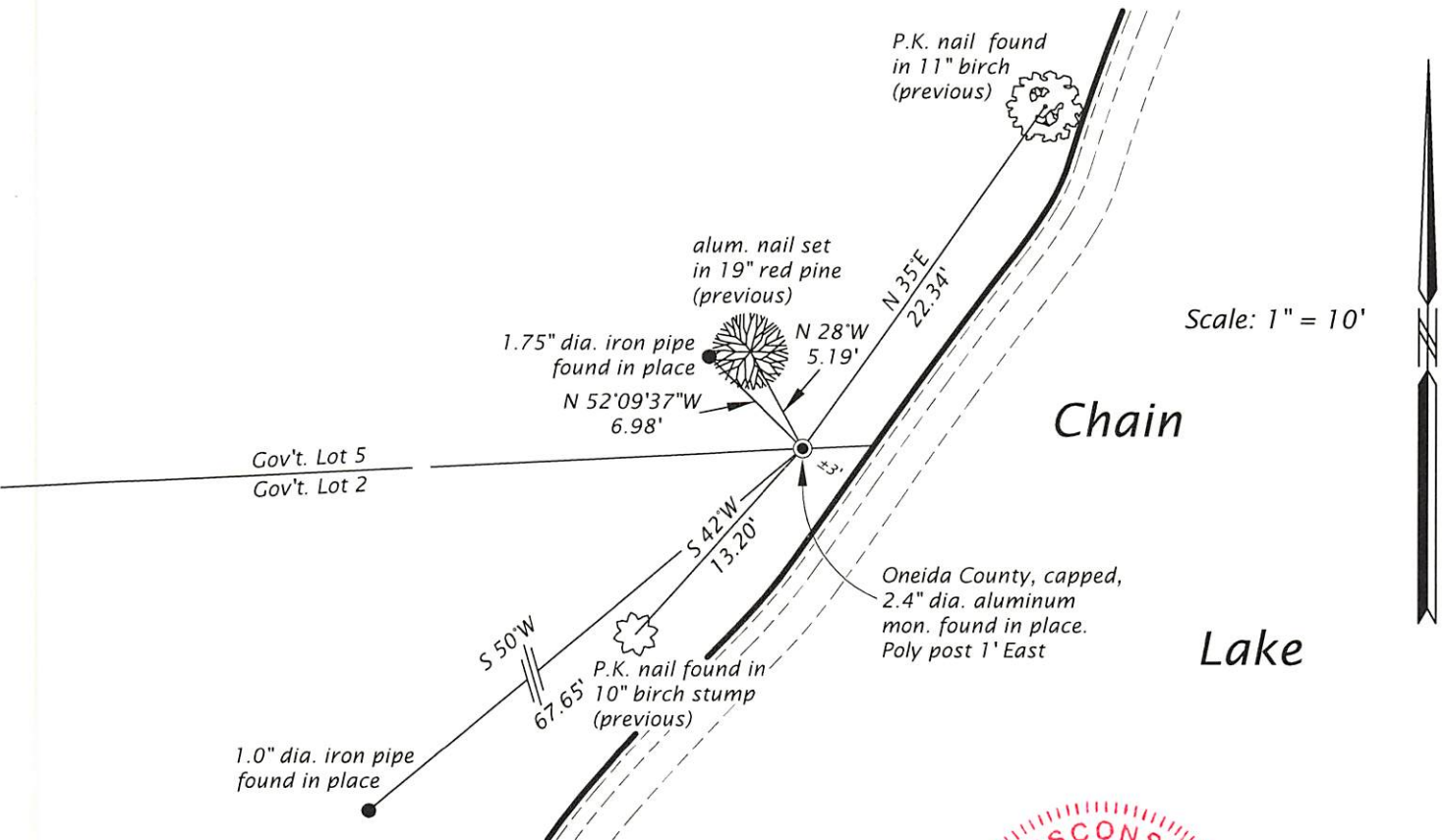
SEE PREVIOUS U.S.P.L.S. MONUMENT RECORD DATED NOVEMBER 9, 1997

(f)(g)(h) DESCRIPTION OF MONUMENT FOUND AT THIS CORNER AND IF IT WAS ACCEPTED, STATE ALL EVIDENCE (MATERIAL, TESTIMONIAL, OCCUPATIONAL, PLATS, RECORD, OTHER MONUMENTS) USED AS A BASIS FOR ESTABLISHING LOCATION. IF NOT ACCEPTED OR IF NOTHING WAS FOUND, STATE EVIDENCE USED AS BASIS FOR ESTABLISHING LOCATION. IF REESTABLISHED THROUGH LOST CORNER PROPORTIONATE METHODS, INDICATE ALL MONUMENTS, DISTANCES AND DIRECTIONS USED TO ESTABLISH. INDICATE TYPE OF MONUMENT AND SIGN POST FOUND OR SET.

This is a perpetuation of a previous U.S.P.L.S. Monument Record by William C. Rohde, RLS, dated November 9, 1997, and filed in the office of the Oneida County Register of Deeds. A complete history of the corner can be found on the previous monument record. I accept the previous location as a true and faithful perpetuation or reestablishment of the original corner location and further perpetuate it as follows.

July 2, 2024 - James D. Rein, P.L.S. No. S-1234. We found, and I accepted, the Oneida County, capped, 2.4" dia. aluminum monument set by Rohde in 1997. Two of the previous bearing trees are now dead or gone. See below for updated references.

(c)(d)(e) PLAN VIEW OF CORNER WITH TIES TO AT LEAST 4 WITNESS MONUMENTS. IF IN DISAGREEMENT WITH PREVIOUSLY ESTABLISHED CORNER, SHOW THE DISTANCE BETWEEN THE TWO CORNERS AND ALSO INDICATE THE TIES TO THE DISPUTED CORNER.



(i) I, JAMES D. REIN, PROFESSIONAL LAND SURVEYOR NO. S-1234 HEREBY CERTIFY THAT THE CORNER LOCATION ON THIS RECORD WAS DETERMINED BY ME OR UNDER MY DIRECTION AND CONTROL AND THAT THIS U.S. PUBLIC LAND SURVEY MONUMENT RECORD IS CORRECT AND COMPLETE TO THE BEST OF MY KNOWLEDGE AND BELIEF.



SIGNATURE James D. Rein DATE 9/02/24