

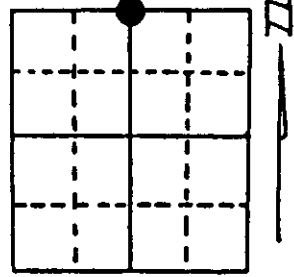
U.S. PUBLIC LAND SURVEY MONUMENT RECORD

Note: This form is intended and designed to fulfill all requirements of Wisconsin Administrative Code, Chapter A-E 7.08 U.S. Public Land Survey Monument Record (3) (a) (b) (c) (d) (e) (f) (g) (h) (i). An additional sheet may be added if necessary to conform with said requirements.

(a) Corner location: Township 39 North
 Range 9 East/West

Town/City/Village Sugar Camp

County Oneida

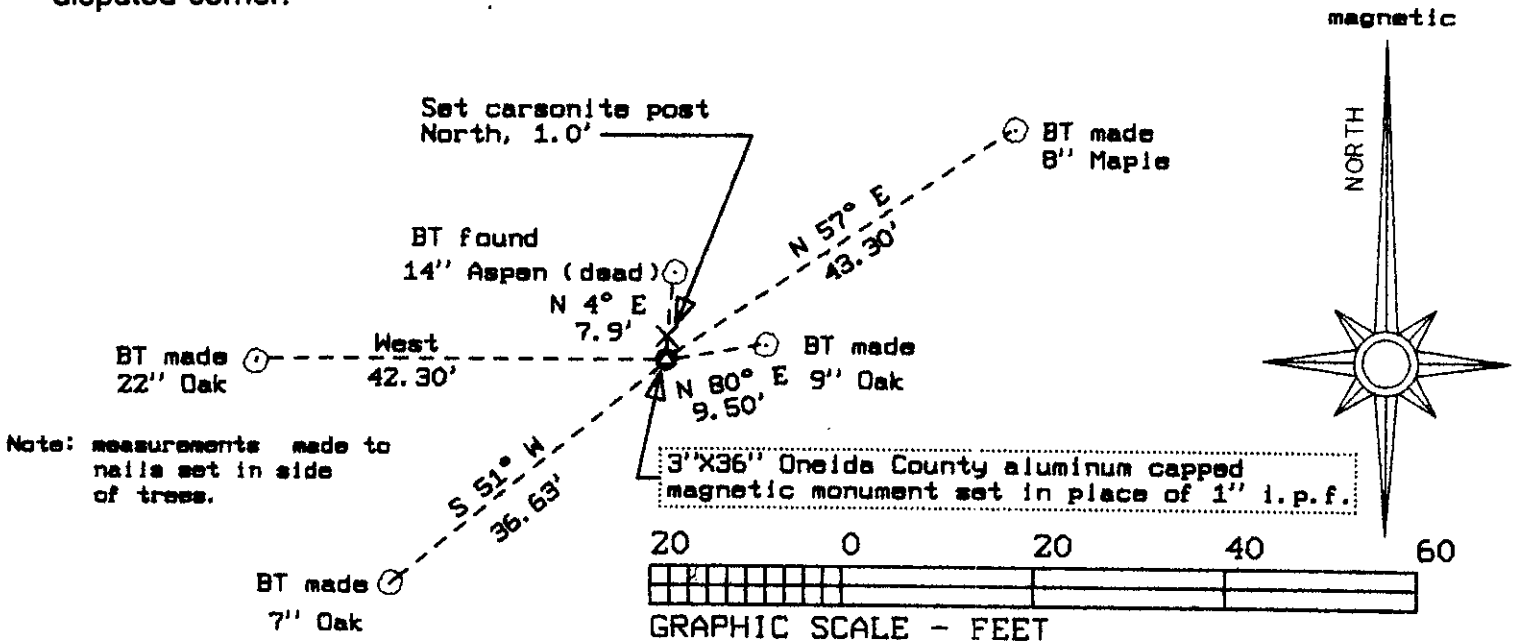


$\frac{1}{4}$ corner Section 28

(b) (f) (g) (h) Description of monument found at this corner and if it was accepted, state all evidence (material, testimonial, occupational, plats, records, other monuments) used as a basis for accepting. If not accepted or if nothing was found, state evidence used as basis for establishing location. If reestablished through lost corner proportionate methods, indicate all monuments, distances and directions used to establish. Indicate type of monument found or set and sign post.

- 1863 Sept. 22-29 Original Surveyor William Daugherty
 BT's: 12" Birch S57°W 22 links.
 10" Sugar N24°E 71 links
- 1948 - Genisot Engineering Co. F.R. Wincentzen indicates corner as 5"X5" Post.
- 1949 BT's: 7" W. Birch S82°W, 10.5 links
 10" Aspen N4°E 12 links.
- 1952 Wincentzen recovers corner.
- 1981 Genisot Engineering redrafted 1949 Wincentzen survey plat showing iron pipe as corner.
- 1988 James L. Will, Genisot & Assoc. recovers 2" rail.
- 1994 I recovered 1" dia iron pipe with 2" rail up 2 feet next to iron pipe and replaced with 3"X36" Aluminum Capped County Monument. Found Wincentzen's BT, made 4 new BT's and set carsonite post as indicated below.

(c) (d) (e) Plan view of corner with ties to at least 4 witness monuments. If in disagreement with previously established corner, show the distances between the two corners and also indicate the ties to the disputed corner.



Note: measurements made to nails set in side of trees.

(i) I, Stephen J. Favorite RLS#1616
 (type or print name) certify that the corner location on this record was determined by me or under my direction and control and that this U.S. Public Land Survey Monument Record is correct and complete to the best of my knowledge and belief.

Stephen J. Favorite 12-29-30
 Signature Date



Index No. 6-11

3909 2100 20

U.S. PUBLIC LAND SURVEY MONUMENT RECORD ADDENDUM

Note: This form is intended and designed to fulfill all requirements of the Wisconsin Administrative Code, Chapter A-E 7.08 U.S. Public Land Monument Record (3)(a)(b)(c)(d)(e)(f)(g)(h)(i). An additional sheet may be added if necessary to conform with said requirements.

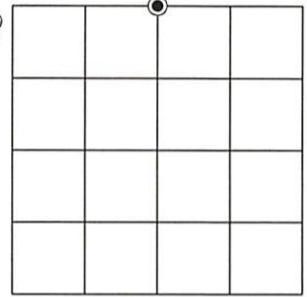
(a) CORNER LOCATION:

North 1/4 Corner of Section 28
Township 39 North
Range 9 East
Town of Sugar Camp
County of Oneida

North:
East:
Datum: NAD
GNSS Method:
GNSS Control:

(RECORDING AREA)

SECTION 28



(b) HISTORY OF ORIGINAL CORNER ESTABLISHMENT

Original Surveyor:
Date of Survey: Commenced
Completed
Original B.T.'S

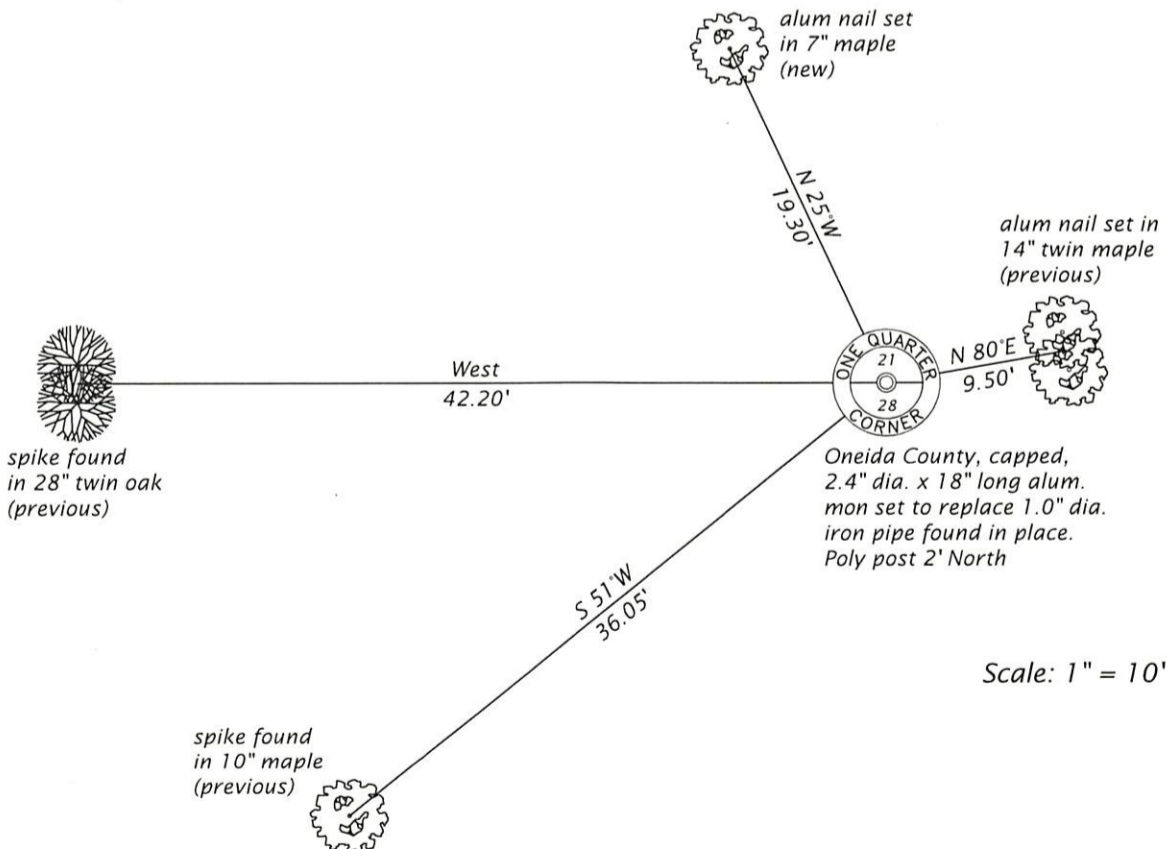
SEE PREVIOUS U.S.P.L.S. MONUMENT RECORD DATED DECEMBER 29, 1994?

(f)(g)(h) DESCRIPTION OF MONUMENT FOUND AT THIS CORNER AND IF IT WAS ACCEPTED, STATE ALL EVIDENCE (MATERIAL, TESTIMONIAL, OCCUPATIONAL, PLATS, RECORD, OTHER MONUMENTS) USED AS A BASIS FOR ESTABLISHING LOCATION. IF NOT ACCEPTED OR IF NOTHING WAS FOUND, STATE EVIDENCE USED AS BASIS FOR ESTABLISHING LOCATION. IF REESTABLISHED THROUGH LOST CORNER PROPORTIONATE METHODS, INDICATE ALL MONUMENTS, DISTANCES AND DIRECTIONS USED TO ESTABLISH. INDICATE TYPE OF MONUMENT AND SIGN POST FOUND OR SET.

This is a perpetuation of a previous U.S.P.L.S. Monument Record by Favorite, RLS, dated December 29, 1994?, and filed in the office of the Oneida County Register of Deeds. A complete history of the corner can be found on the previous monument record. I accept the previous location as a true and faithful perpetuation or reestablishment of the original corner location and further perpetuate it as follows.

July 2, 2024 - James D. Rein, P.L.S. No. S-1234. We found the 1.0" dia. iron pipe, which was not replaced with an aluminum monument by surveyor Favorite. Thus we replaced the pipe with an Oneida County, capped, 2.4" dia. aluminum monument. Two of the previous bearing trees are gone. See below for updated references.

(c)(d)(e) PLAN VIEW OF CORNER WITH TIES TO AT LEAST 4 WITNESS MONUMENTS. IF IN DISAGREEMENT WITH PREVIOUSLY ESTABLISHED CORNER, SHOW THE DISTANCE BETWEEN THE TWO CORNERS AND ALSO INDICATE THE TIES TO THE DISPUTED CORNER.



(i) I, JAMES D. REIN, PROFESSIONAL LAND SURVEYOR NO. S-1234 HEREBY CERTIFY THAT THE CORNER LOCATION ON THIS RECORD WAS DETERMINED BY ME OR UNDER MY DIRECTION AND CONTROL AND THAT THIS U.S. PUBLIC LAND SURVEY MONUMENT RECORD IS CORRECT AND COMPLETE TO THE BEST OF MY KNOWLEDGE AND BELIEF.



James D. Rein
SIGNATURE

9/02/24
DATE

INDEX NO. R - 11
3909210020