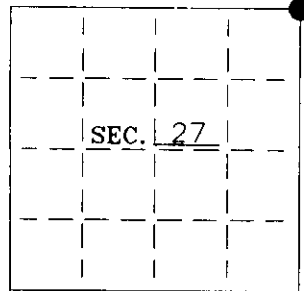


**U. S. PUBLIC LAND SURVEY MONUMENT RECORD**

Note: This form is intended and designed to fulfill all requirements of Wisconsin Administrative Code-Chapter A-E 7.08 U. S. Public Land Survey Monument Record (3)(a)(b)(c)(d)(e)(f)(g)(h)(i). An additional sheet may be added if necessary to conform with said requirements.

(a) CORNER LOCATION: Oneida County Coordinates  
NE corner of Sec. 27 N 240733.9223  
 Township 39 North E 281565.9113  
 Range 9 East Datum Base Oneida Cty. Coord. System  
 Town Sugar Camp County of Oneida

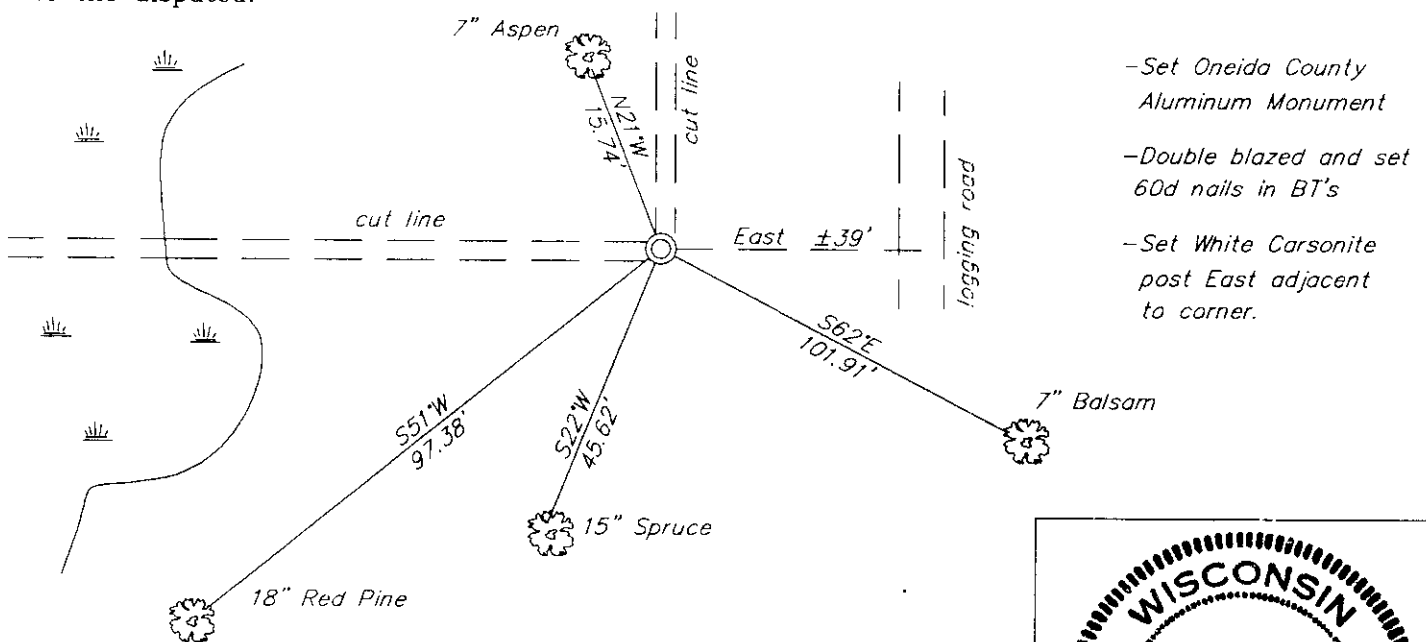


(b) HISTORY OF ORIGINAL CORNER ESTABLISHMENT:  
 Original Surveyor: W.E. Daugherty Original B.T.'S  
 Date of Survey: Commenced 1863 10" Y. Pine, N6°E, 10lks  
 Completed 1863 14" Y. Pine, S44°W, 26lks

(b)(f)(g)(h) Description of monument found at this corner and if it was accepted—state all evidence (material—testimonial—occupation—plats—records—other monuments) used as a basis for accepting. If not accepted or if nothing was found state evidence used as basis for establishing location. If reestablished through lost corner proportionate methods indicate all monuments—distances and directions used to establish. Indicate type of monument and sign post found or set.

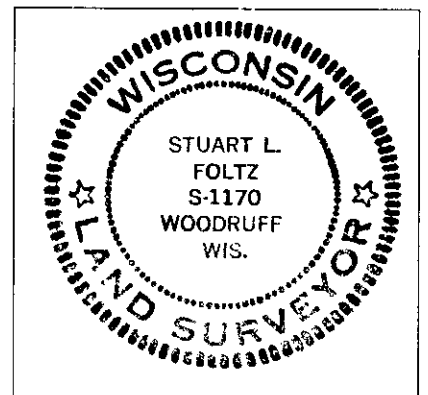
- 1887— DNR survey notes indicate B.F. Dorr was at the East 1/4 Corner of Section 27, and measured north to the section corner.
- ? — DNR survey notes indicate Graham was at the corner and measured west to the North 1/4 Corner of Sec. 27.
- 1931— DNR survey notes indicate H. Hall found an old post down, found both original BTs. Set a pitch post. BT's; 12" W. Pine, S2°W, .66 ch., 8" W. Pine, N22-1/2°E, 23-1/2 ch.
- 1952— DNR notes indicate R. Ilg was at this corner and witnessed corner to the following BT's: 7" Aspen, N24°W, .13ch (8.58'), 7" Aspen, N42°E, .07ch. (4.80'), 6" Aspen, S75°W, .55ch, 8" Aspen, S30°E, .21ch.
- 2002— I found a depression 1'in dia. by 6" deep, on a cut line bearing west and north. I found possible remains of an old wood post next to depression. I also found two stumps that matched close to Ilg's BT's; 7" Aspen, N24°W, .13ch. (8.58'), and a 7" Aspen, N42°E, .07ch. (4.62'). I set an Oneida County Aluminum Monument in the depression for the corner position, and witnessed the corner as shown below.

(c)(d)(e) Plan view of corner with ties to at least 4 witness monuments. If in disagreement with previously established corner—show the distances between the two corners and also indicate the ties to the disputed.



(i) I Stuart L. Foltz S-1170  
 hereby certify that the corner location on this record was determined by me or under my direction and control and that this U.S. Public Land Survey Monument Record is correct and complete to the best of my knowledge and belief.

Signature Stuart L. Foltz Date 2/10/03  
 Foltz and Associates, Inc.



INDEX NO. R-17

3909220000