

At _____
THOMAS H. LEIGHTON
REGISTER OF DEEDS
Recorders Data

This form is intended to fulfill the requirements of Chapter A-E7.08 (3)(a) thru (i) U.S. Public Land Survey Monument Location Record, Wisconsin Administrative Code. Use the reverse side of form for continuation.

U.S. PUBLIC LAND SURVEY MONUMENT LOCATION RECORD

USPLS CORNER: EAST WITNESS MC SECTION: 27 TOWNSHIP: 39 NORTH RANGE: 9 EAST
 NAME OF WATERWAY FOR M.C. CORNER : CHAIN LAKE SECTION LINE: NORTH
 (CITY)(VILLAGE)(TOWN) OF: SUGAR CAMP COUNTY OF: ONEIDA

Description of monument found or placed and all other evidence used as the basis for monument location; including monuments and measurements required if the corner location was reestablished by lost corner proportionate methods. Also indicate name of the original surveyor, original survey date and the corner monument, bearing trees, witness or other reference monuments established, including measured bearing and distance ties, from available survey records.

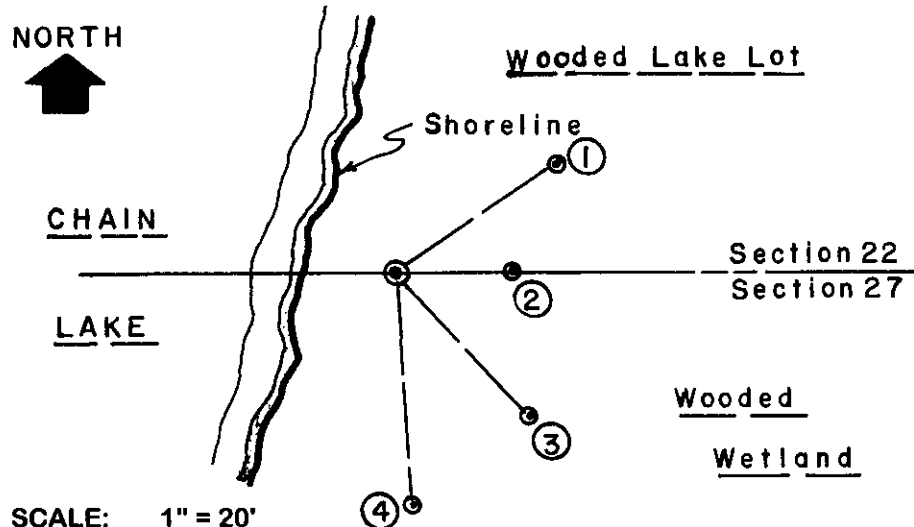
Found and accepted a standard Oneida County aluminum capped monument 2" up and stamped in 1998 at this corner location; also a standard white poly "T" marker post 11" East and four(4) older BTs I used for new ties below. Corner falls 9' East of existing lakeshore bearing N15°E. The aluminum monument had been apparently set by Steve Favorite/RLS per his Plat of Survey filed as B-4101 in Oneida County survey records; however, no USPLS corner location record has been filed to date. Corner is at SW corner of improved lake lot at Fire No. 7850, Chain Lake Road.

In September 1863, William E. Daugherty/GLO set a wood post as the original corner and noted OBTs: a 10" Pw N36°E 23 links and an 8" Bw S53°E 20 links; all now obliterated. MC post was set 24.31 chains West of N1/4 corner of Section 27.

In 1966/1967, Robert E. Bandow/RLS 104 notes this MC as an iron pipe per Plats of Survey filed as B-3895 and C-1456 in Oneida County survey records. In 1974, Gerald B. Inman/RLS 891 notes a 1" iron pipe at this corner per Plat of Survey filed as B-292 in Oneida County survey records. In 1989, James L. Will/RLS 1410 notes a 1" iron pipe at this corner per Plat of Survey filed as B-2072 in Oneida County survey records. In 1998, Stephen J. Favorite/RLS 1616 notes a standard Oneida County aluminum monument set at this corner, presumably at location of previous record iron pipe, per Plat of Survey filed as B-4101 in Oneida County survey records, but no ties noted.

This recovery completed May 30, 2003; there were no direct witnesses.

Plan view map of monument location with bearing and distance ties to a minimum of four(4) described witness or reference monuments of concrete, natural stone, iron, live bearing trees or equivalent material. If applicable, also show a minimum of two(2) bearing and distance ties to any other monument found and not accepted; including the bearing and distance from the accepted monument.



WITNESS MONUMENT TIES:

- ① Old 8" Mr BT with lower blaze open, N55°E 20.02'.
- ② Old 15" Pw BT with upper blaze shut & lower blaze open, East 11.88'.
- ③ Old 13" Pw BT with upper & lower blazes shut, S43°E 20.36'.
- ④ Old 8" Pw BT with upper blaze shut & lower blaze open, S04°E 24.14'.

40d aluminum nails found in lower right face of old BTs; however, my ties to usual PK/W in lower right face.

Unless otherwise indicated, all bearing tree ties are to a .25" dia. by 2.5" long PK nail with a 1.25" dia. steel washer driven into unblazed right face and a .25" dia. by 2.5" long PK nail with a 2" dia. steel washer stamped BT is also driven into unblazed face of bearing tree at DBH; the basis for measured bearings is by compass to nearest degree and all tie distances are measured horizontal by steel tape corrected to nearest 1/100th feet at standard temperature of 68° F.

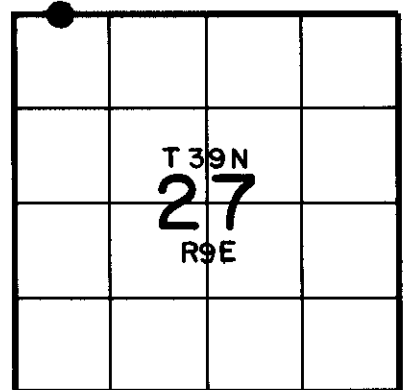
RLS SEAL:



LAND SURVEYOR CERTIFICATE:

I, William C. Rohde, hereby certify that I am duly licensed as a Professional Land Surveyor in the State of Wisconsin; that this USPLS monument location was determined by me and/or under my direct supervision and control; and that this U.S. Public Land Survey Monument Location Record is true and correct to the best of my knowledge and belief.

Signed William C. Rohde
William C. Rohde RLS 841



SECTION LOCATION MAP
INDEX NO. R 13-14