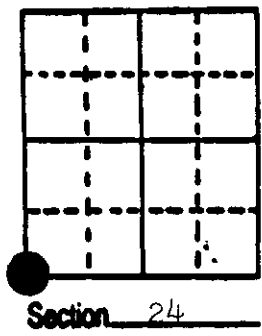
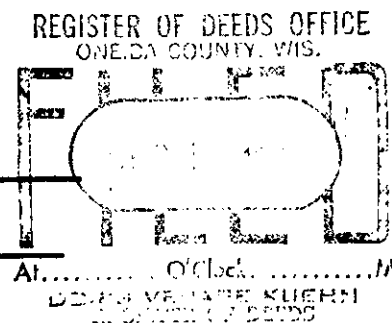


# U.S. PUBLIC LAND SURVEY MONUMENT RECORD

**Note:** This form is intended and designed to fulfill all requirements of Wisconsin Administrative Code, Chapter A-E 5.02, U.S. Public Land Survey Monument Record (3) (a) (b) (c) (d) (e) (f) (g) (h) (i). An additional sheet may be added if necessary to conform with said requirements.

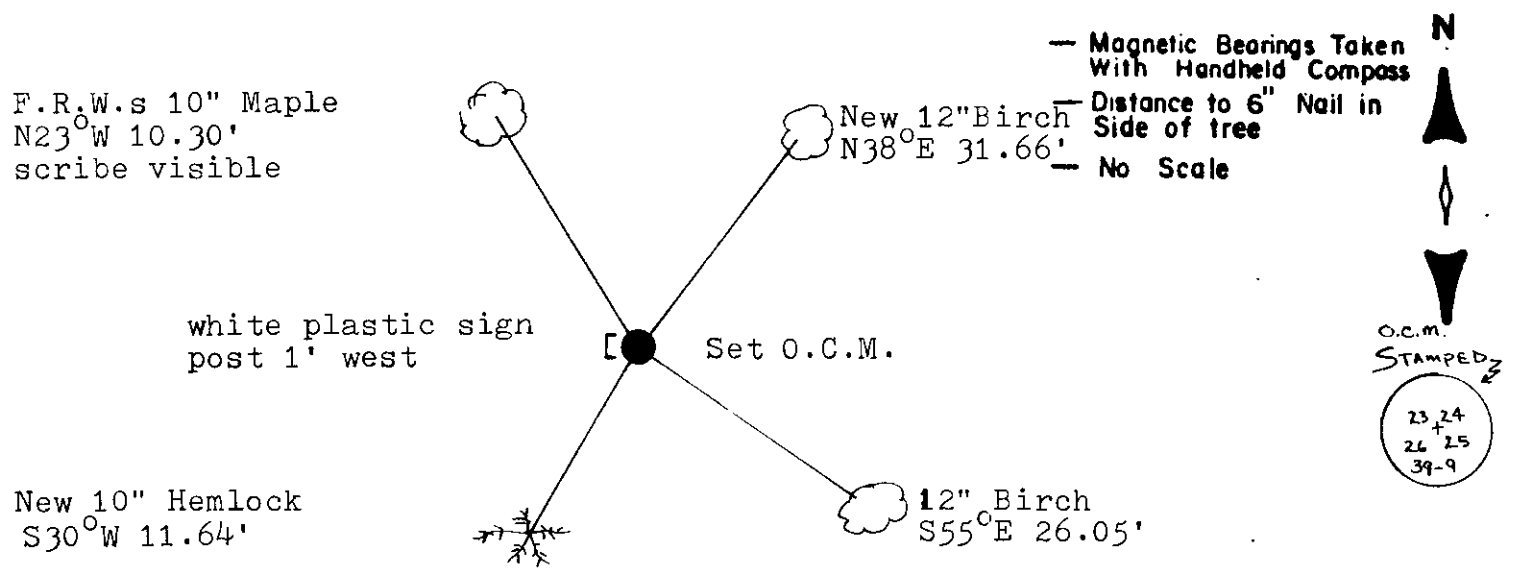
(a) Corner location: Township 39 North  
 Range 9 East/West  
 Town/City/Village Sugar Camp  
 County Oneida



(b) (f) (g) (h) Description of monument found at this corner and if it was accepted, state all evidence (material, testimonial, occupational, plats, records, other monuments) used as a basis for accepting. If not accepted or if nothing was found, state evidence used as basis for establishing location. If reestablished through lost corner proportionate methods, indicate all monuments, distances and directions used to establish.

- 1863 W.E. Daughterty established original cor. 23-24-25-26 at 80.00 ch. B.T.s Hemlock 10 S 67 E 14, Hemlock 25 N 4 W 5.
- 1954 F.R. Wincentzen reestablished corner by prolonging a line from the  $\frac{1}{4}$  corner between 23 and 26 through the E 1/16 to the S.E. corner of Sec. 23, set a 5 X 5 post; B.T.s Yellow Birch 8 S 65 E 38 lks, Maple 8 N 23 W 15.51 lks.
- 1987 I recovered a 1" iron pipe mark, the corner and F.R.W.'s Maple B.T. I set an Oneida County Split Base Monument over the 1" iron pipe and witnessed it as shown below.

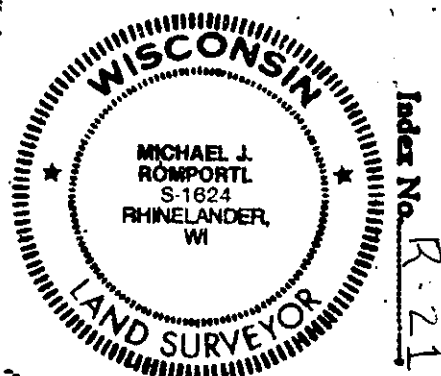
(c) (d) (e) Plan view of corner with ties to at least 4 witness monuments. If in disagreement with previously established corner, show the distances between the two corners and also indicate the ties to the disputed corner.



(i) I, Michael J. Romportl  
 (type or print name) certify that the corner location on this record was determined by me or under my direction and control and that this U.S. Public Land Survey Monument Record is correct and complete to the best of my knowledge and belief.

Michael J. Romportl 12/2/87  
 Signature Date

GENISOT & ASSOCIATES INC.  
 1512 EAGLE ST., RHINELANDER, WIS.



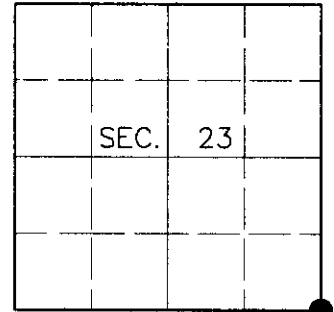
3909230000

# U.S. PUBLIC LAND SURVEY MONUMENT RECORD

Note: This form is intended and designed to fulfill all requirements of Wisconsin Administrative Code, Chapter A-E 7.08, U.S. Public Land Survey Monument Record (3)(a)(b)(c)(d)(e)(f)(g)(h)(i). An additional sheet may be added if necessary to conform with said requirements.

**(a) CORNER LOCATION**  
 Southeast Corner of Section 23  
 Township 39 North  
 Range 9 East  
 Town of Sugar Camp

State Plane Coordinates  
 X  
 Y  
 Datum  
 County of Oneida



**(b) HISTORY OF ORIGINAL CORNER ESTABLISHMENT**

Original Surveyor: William E. Daugherty

Original Bearing Trees:

Date of Survey: Commenced Sept. 22, 1863  
 Completed Sept. 29, 1863

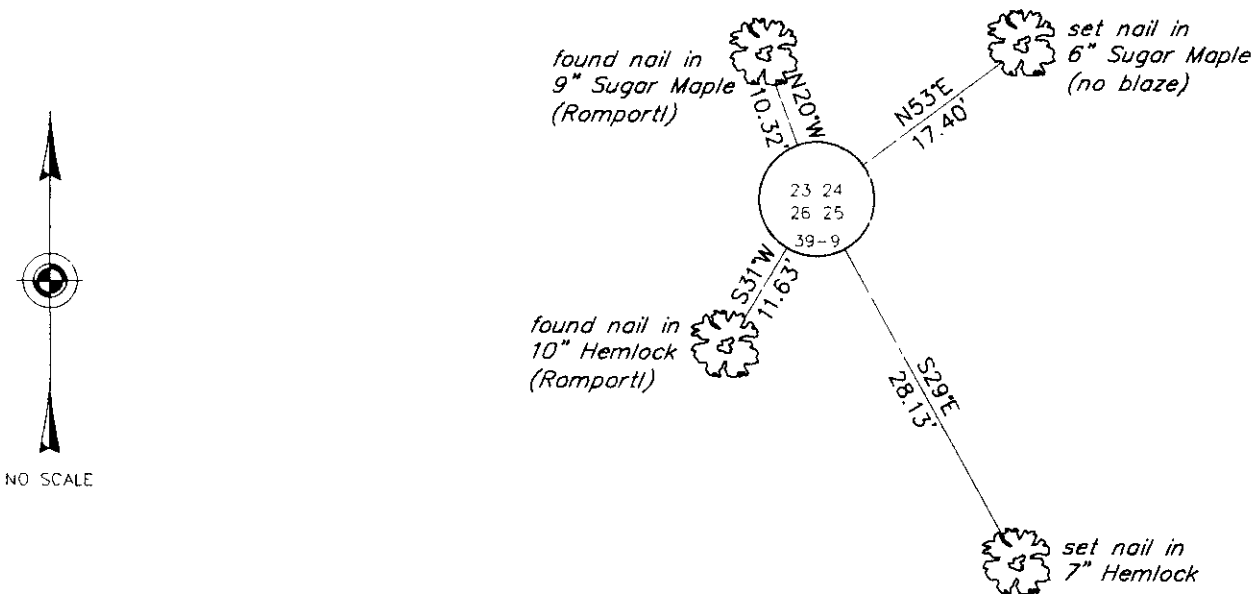
Hemlock 10 S67°E, 14 links  
 Hemlock 25 N4°W, 5 links

(b)(f)(g)(h) Description of monument found at this corner and if it was accepted, state all evidence (material, testimonial, occupational, plats, records, other monuments) used as a basis for accepting. If not accepted or if nothing was found, state evidence used as basis for establishing location. If reestablished through lost corner proportionate methods, indicate all monuments, distances and directions used to establish. Indicate type of monument and sign post found or set.


December 2, 1987: U.S. Public Land Survey Monument Record by Michael J. Romportl, Registered Land Surveyor. Romportl set an Oneida County capped monument with the following bearing trees: Birch 12" N38°E, 31.66 feet; Birch 12" S55°E, 26.05 feet; Hemlock 10" S30°W, 11.64 feet; Maple 10" N23°W, 10.30 feet.

June 30, 2000: I found and accepted a 2-1/2" dia. aluminum pipe with 3-1/4" dia. Oneida County aluminum cap 14" above grade and marked as shown below. I found Romportl's W. Birch stump 14" S50°E, 26.2 feet. I established accessories as shown below and found a plastic sign post South, 1 foot.

(c)(d)(e) Plan view of corner with ties to at least 4 witness monuments. If in disagreement with previously established corner, show the distances between the two corners and also indicate the ties to the disputed corner.



(i) I, Jeffrey W. Austin, Registered Land Surveyor S-1885, hereby certify that the corner location on this record was determined by me or under my direction and control and that this U.S. Public Land Survey Monument Record is correct and complete to the best of my knowledge and belief.

Signature:  Date: 7-27-00



INDEX NO. R-21

3909230000