

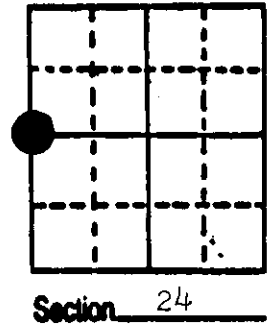
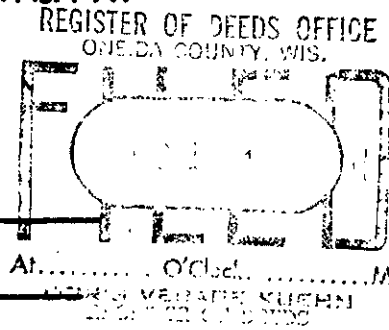
# U.S. PUBLIC LAND SURVEY MONUMENT RECORD

**Note:** This form is intended and designed to fulfill all requirements of Wisconsin Administrative Code, Chapter A-E 5.02, U.S. Public Land Survey Monument Record (3) (a) (b) (c) (d) (e) (f) (g) (h) (i). An additional sheet may be added if necessary to conform with said requirements.

(a) Corner location: Township 39 North  
 Range 9 East/West

Town/City/Village Sugar Camp

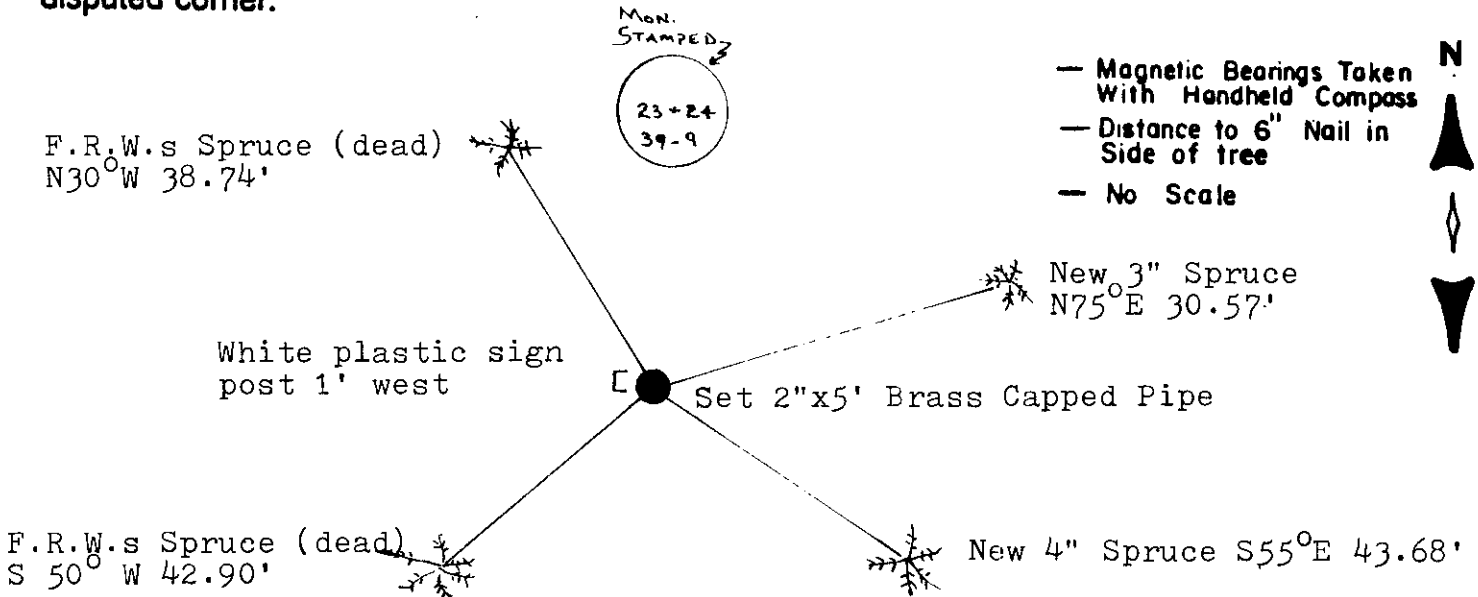
County Oneida



(b) (f) (g) (h) Description of monument found at this corner and if it was accepted, state all evidence (material, testimonial, occupational, plats, records, other monuments) used as a basis for accepting. If not accepted or if nothing was found, state evidence used as basis for establishing location. If reestablished through lost corner proportionate methods, indicate all monuments, distances and directions used to establish.

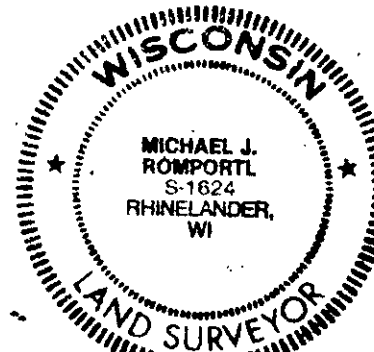
- 1863 W.E. Daughterty established original corner 23-24 40.00 Set  $\frac{1}{4}$  Birch 10 N 70 E 24 Aspen 10 N 84 W 18... 80.00 Sec. cor.
- 1894 B.F. Dorr S.W. cor. 24 N 74.50 to old E-W Sec. line.
- 1952 F.R. Wincentzen reestablished the  $\frac{1}{4}$  corner between 23 and 24, proportioning it in between the two section corners. Set 5 X 5 Post, B.T.s Spruce 7 S 35 W 64.9 lks, Spruce 5 N 34 W 58.5 lks.
- 1987 I found a wood post in the swamp agreeing with F.R.W.s B.T.s. I set a 2" X 5' Brass Capped Pipe in place of the wood post and witnessed it as shown below.

(c) (d) (e) Plan view of corner with ties to at least 4 witness monuments. If in disagreement with previously established corner, show the distances between the two corners and also indicate the ties to the disputed corner.



(i) Michael J. Romportl  
 (type or print name) certify that the corner location on this record was determined by me or under my direction and control and that this U.S. Public Land Survey Monument Record is correct and complete to the best of my knowledge and belief.

Michael J. Romportl 12/2/87  
 Signature Date  
 GENISOT & ASSOCIATES INC.  
 1512 EAGLE ST., RHINELANDER, WIS.



Index No. P-21

3909232000

# U.S. PUBLIC LAND SURVEY MONUMENT RECORD

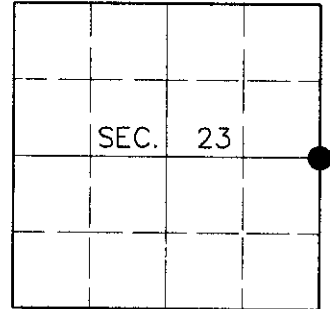
Note: This form is intended and designed to fulfill all requirements of Wisconsin Administrative Code, Chapter A-E 7.08, U.S. Public Land Survey Monument Record (3)(a)(b)(c)(d)(e)(f)(g)(h)(i). An additional sheet may be added if necessary to conform with said requirements.

**(a) CORNER LOCATION**

East ¼ Corner of Section 23  
 Township 39 North  
 Range 9 East  
 Town of Sugar Camp

**State Plane Coordinates**

X  
 Y  
 Datum  
 County of Oneida



**(b) HISTORY OF ORIGINAL CORNER ESTABLISHMENT**

Original Surveyor: William E. Daugherty

Original Bearing Trees:

Date of Survey: Commenced Sept. 22, 1863  
 Completed Sept. 29, 1863

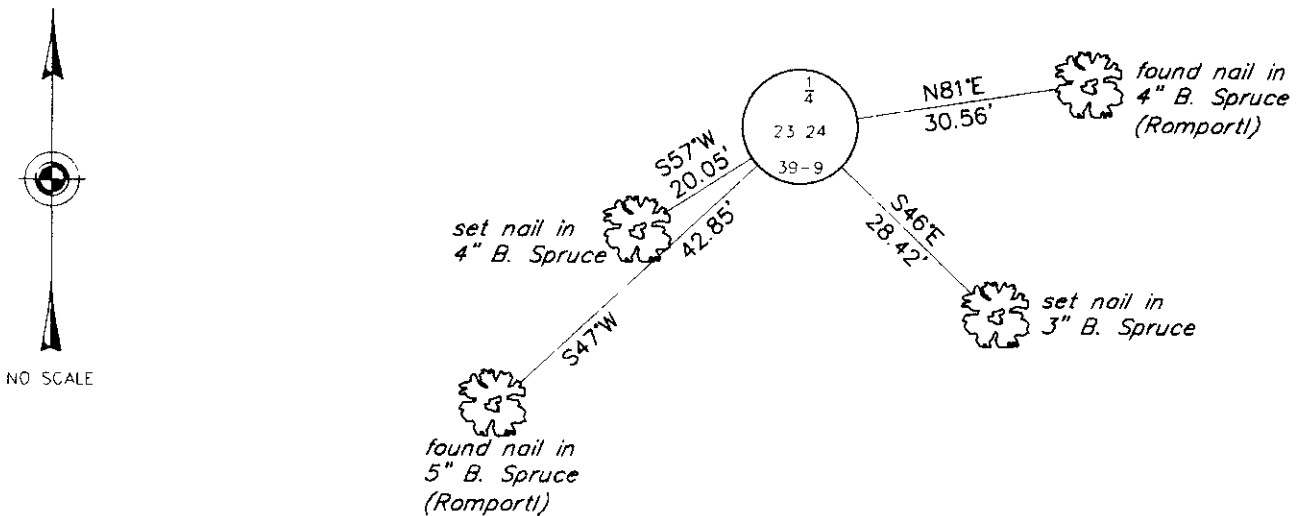
Birch 10 N70°E, 24 links  
 Aspen 10 N84°W, 18 links

(b)(f)(g)(h) Description of monument found at this corner and if it was accepted, state all evidence (material, testimonial, occupational, plats, records, other monuments) used as a basis for accepting. If not accepted or if nothing was found, state evidence used as basis for establishing location. If reestablished through lost corner proportionate methods, indicate all monuments, distances and directions used to establish. Indicate type of monument and sign post found or set.

December 2, 1987: U.S. Public Land Survey Monument Record by Michael J. Romportl, Registered Land Surveyor. Romportl set a 2" dia. iron pipe with brass cap with the following bearing trees: Spruce 3" N75°E, 30.57 feet; Spruce 4" S55°E, 43.68 feet; Spruce (dead) S50°W, 42.90 feet; Spruce (dead) N30°W, 38.74 feet.

July 1, 2000: I found and accepted a 2-½" dia. iron pipe with 2-½" dia. brass cap 12" above grade and marked as shown below. I found Romportl's B. Spruce stump 4" S51°E, 43.5 feet. I established accessories as shown below and found a plastic sign post West, ½ foot.

(c)(d)(e) Plan view of corner with ties to at least 4 witness monuments. If in disagreement with previously established corner, show the distances between the two corners and also indicate the ties to the disputed corner.



(i) I, Jeffrey W. Austin, Registered Land Surveyor S-1885, hereby certify that the corner location on this record was determined by me or under my direction and control and that this U.S. Public Land Survey Monument Record is correct and complete to the best of my knowledge and belief.

*[Handwritten Signature]*  
 \_\_\_\_\_  
 Signature

7-27-00  
 \_\_\_\_\_  
 Date



INDEX NO. P-21

3909 23 2000