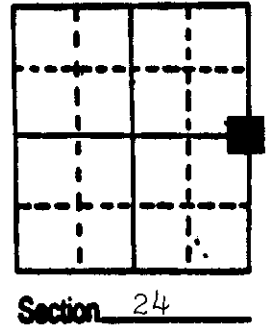
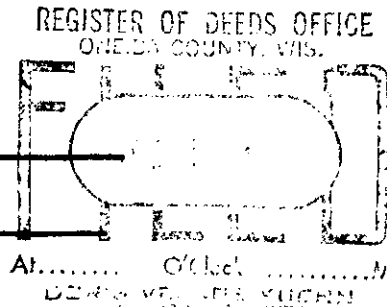


# U.S. PUBLIC LAND SURVEY MONUMENT RECORD

**Note:** This form is intended and designed to fulfill all requirements of Wisconsin Administrative Code, Chapter A-E 5.02, U.S. Public Land Survey Monument Record (3) (a) (b) (c) (d) (e) (f) (g) (h) (i). An additional sheet may be added if necessary to conform with said requirements.

(a) Corner location: Township 39 North  
 Range 9 East/West  
 Town/City/Village Sugar Camp  
 County Oneida



(b) (f) (g) (h) Description of monument found at this corner and if it was accepted, state all evidence (material, testimonial, occupational, plats, records, other monuments) used as a basis for accepting. If not accepted or if nothing was found, state evidence used as basis for establishing location. If reestablished through lost corner proportionate methods, indicate all monuments, distances and directions used to establish.

- 1859 Hiram C fellows established original corner at 40.00 ch. B.T.s Birch 12 S 21 W 15; Birch 10 N 37 E 12.
- 1894 B.F. Dorr ran from E 1/4 S 24 North 40.06 to NE cor. 24.
- 1952 F.R. Wincentsen established corner on line between NE cor. 24 and SE cor. 24 at Dorrs distance from the NE corner. B.T.s Maple 5 N 63 E 15 lks; Balsam S 37 W 22 1/2 lks.
- 1955 N.J. Loftus set a brass capped iron pipe at the corner, same B.T.s as F.R.W.
- 1987 I recovered the Brass Capped iron pipe and the Balsam B.T. now a stub and the maple now a stump. I witnessed the corner as shown below.

(c) (d) (e) Plan view of corner with ties to at least 4 witness monuments. If in disagreement with previously established corner, show the distances between the two corners and also indicate the ties to the disputed corner.

New  
 18" Aspen N17W 134.50'

- Magnetic Bearings Taken With Handheld Compass
- Distance to 6" Nail in Side of tree
- No Scale



White plastic sign post North o. 1'

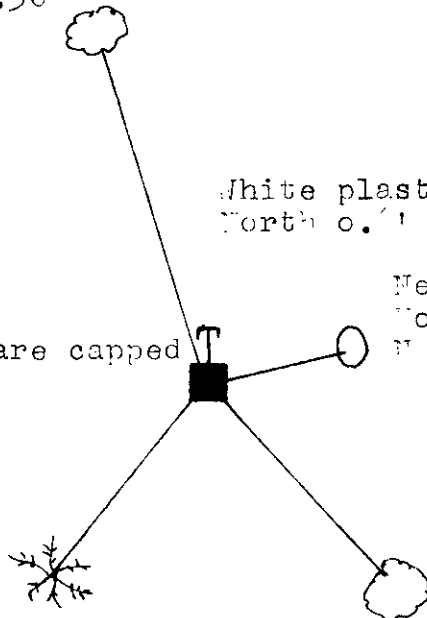
New  
 Hole in 3x3 gra boulder N 77 E 14.04'

Found square capped iron pipe

F.R.W. Balsam stub  
 S 40 W 15.39'

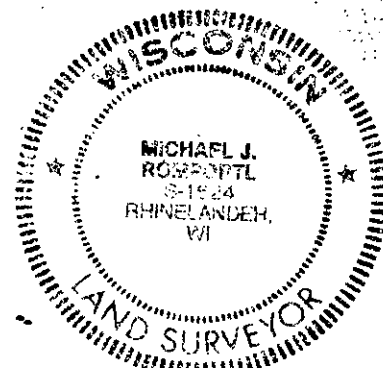
New  
 6" maple in olump of 3.  
 S 42 E 118.55'

STAMPED 3  
 T39N  
 R9E R10E  
 1/4 S 24 19  
 Ripco



(i) I, Michael J. Romportl

(type or print name) certify that the corner location on this record was determined by me or under my direction and control and that this U.S. Public Land Survey Monument Record is correct and complete to the best of my knowledge and belief.



Index No. P. 25

Michael J. Romportl December 2, 1987  
 Signature Date

GENISOT & ASSOCIATES INC.  
 1512 EAGLE ST., RHINELANDER, WIS.

3909 242000

# U.S. PUBLIC LAND SURVEY MONUMENT RECORD

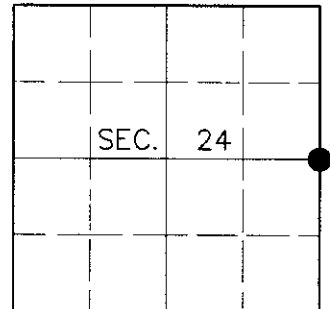
Note: This form is intended and designed to fulfill all requirements of Wisconsin Administrative Code, Chapter A-E 7.08, U.S. Public Land Survey Monument Record (3)(a)(b)(c)(d)(e)(f)(g)(h)(i). An additional sheet may be added if necessary to conform with said requirements.

**(a) CORNER LOCATION**

East 1/4 Corner of Section 24  
 Township 39 North  
 Range 9 East  
 Town of Sugar Camp

**State Plane Coordinates**

X  
 Y  
 Datum  
 County of Oneida



**(b) HISTORY OF ORIGINAL CORNER ESTABLISHMENT**

Original Surveyor: Hiram C. Fellows

Original Bearing Trees:

Date of Survey: Commenced July, 1859  
 Completed July, 1859

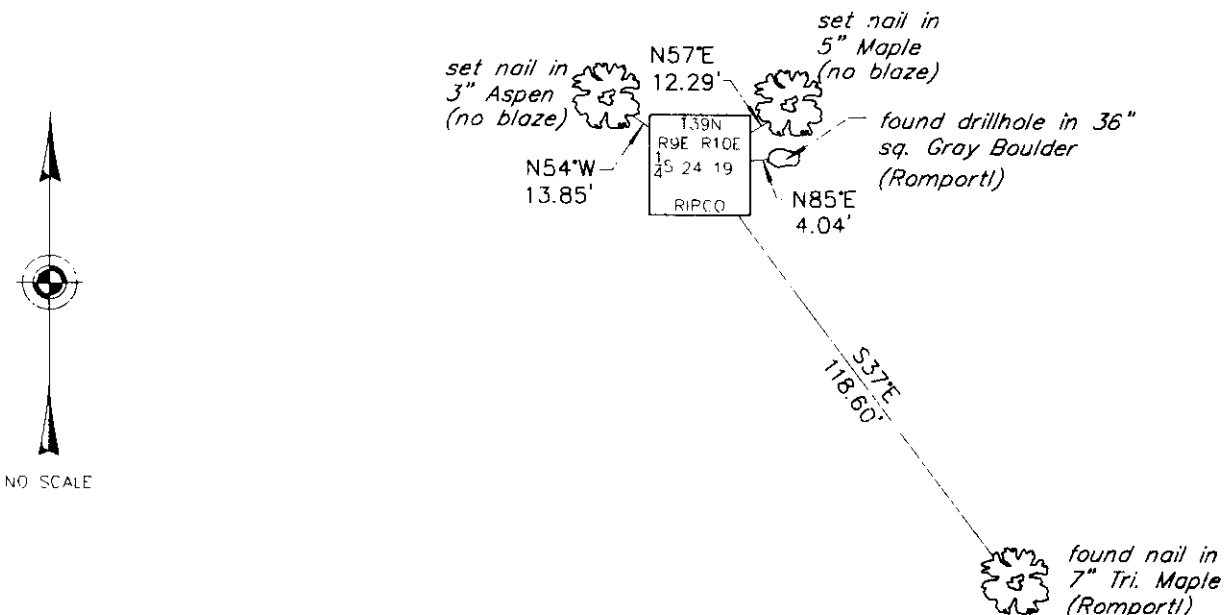
Birch 12 S21°W, 15 links  
 Birch 10 N37°E, 12 links

(b)(f)(g)(h) Description of monument found at this corner and if it was accepted, state all evidence (material, testimonial, occupational, plats, records, other monuments) used as a basis for accepting. If not accepted or if nothing was found, state evidence used as basis for establishing location. If reestablished through lost corner proportionate methods, indicate all monuments, distances and directions used to establish. Indicate type of monument and sign post found or set.

December 2, 1987: U.S. Public Land Survey Monument Record by Michael J. Romportl, Registered Land Surveyor. Romportl found a brass capped iron pipe with the following bearing trees: 18" Aspen N17°W, 134.50 feet; Balsam stub S40°W, 15.39 feet; 6" Maple S42°E, 118.55 feet; hole in 3x3 gray boulder N77°E, 4.04 feet.

July 1, 2000: I found and accepted a 2" dia. iron pipe with 4" sq. brass plate 2" above grade and marked as shown below. I found Romportl's NW and SW bearing trees at record location, but dead. I established accessories as shown below and found a plastic sign post North, 1 foot.

(c)(d)(e) Plan view of corner with ties to at least 4 witness monuments. If in disagreement with previously established corner, show the distances between the two corners and also indicate the ties to the disputed corner.



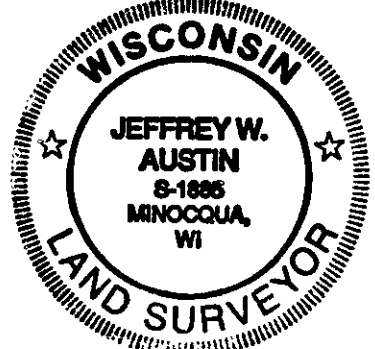
(i) I, Jeffrey W. Austin, Registered Land Surveyor S-1885, hereby certify that the corner location on this record was determined by me or under my direction and control and that this U.S. Public Land Survey Monument Record is correct and complete to the best of my knowledge and belief.

*[Handwritten Signature]*

7-23-00

Signature

Date



INDEX NO. P-25

3909242000