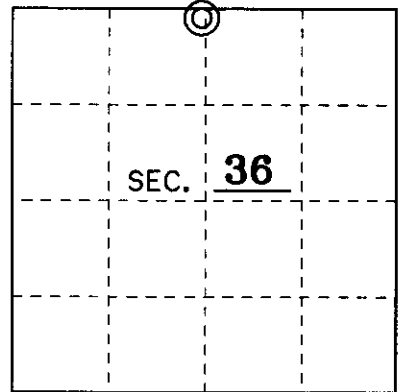


U.S. PUBLIC LAND SURVEY MONUMENT RECORD

Note: This form is intended and designed to fulfill all requirements of Wisconsin Administrative Code, Chapter A-E 7.08 U.S. Public Land Monument Record (3)(a)(b)(c)(d)(e)(f)(g)(h)(i). An additional sheet may be added if necessary to conform with said requirements.

(a) CORNER LOCATION: NORTH County or State Plane Coordinates
1/4 Corner of Section 36 Northing 235828.757
 Township 39 North Easting 289744.786
 Range 9 East Datum Base COUNTY GPS
 Township/City Sugar Camp County of ONEIDA



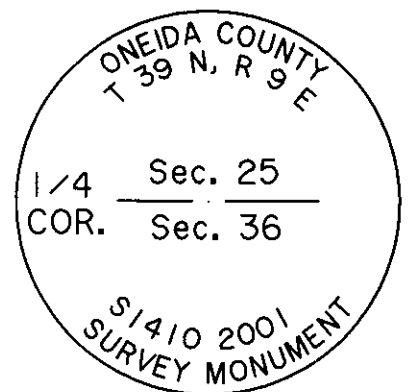
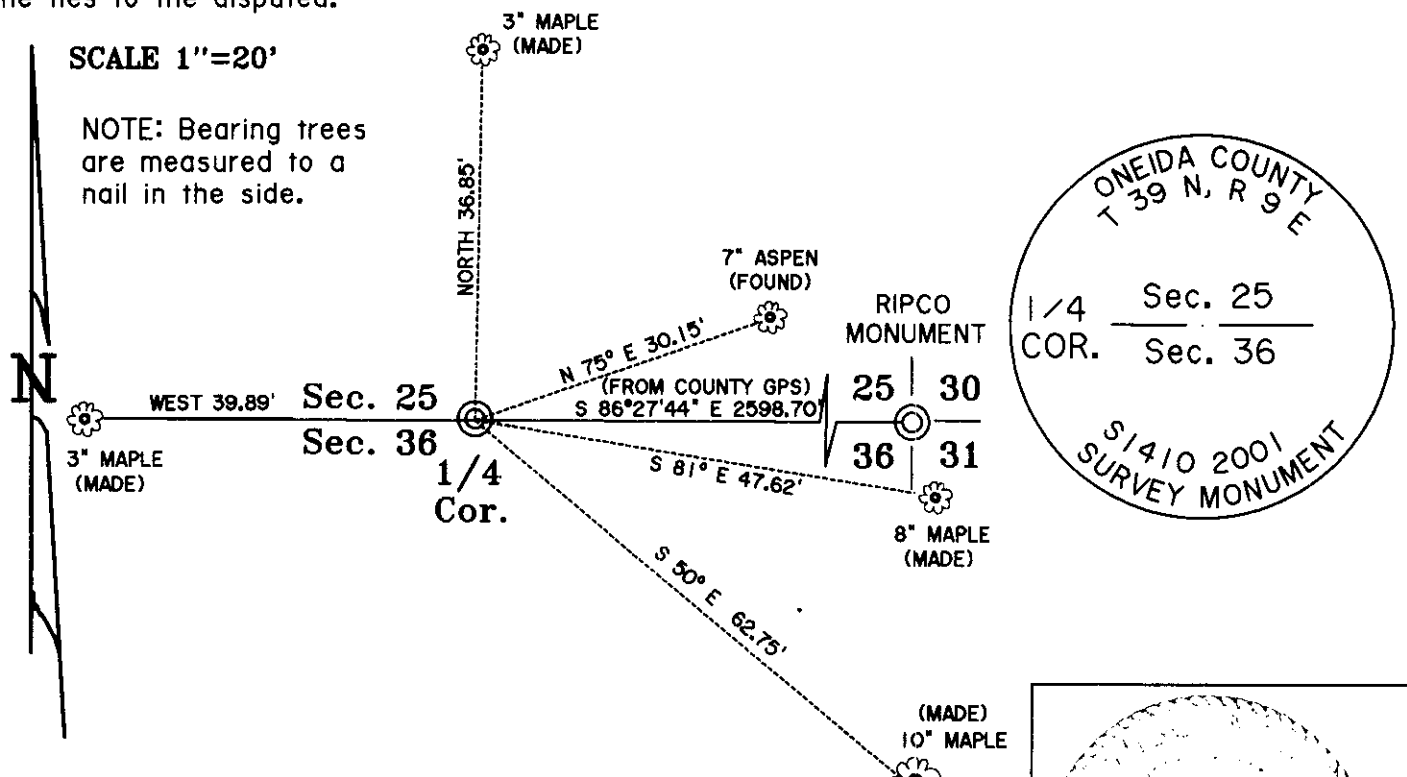
(b) HISTORY OF ORIGINAL CORNER ESTABLISHMENT Original B.T.'s
 Original Surveyor: William E. Daugherty 10" HEMLOCK S 66° W 25 LKS.
 Date of Survey: September 1863 25" BIRCH N 55° E 20 LKS.

(b)(f)(g)(h) Description of monument found at this corner and if it was accepted, state all evidence (material, testimonial, occupational, plats, records, other monuments) used as a basis for accepting. If not accepted or if nothing was found, state evidence used as basis for establishing location. If reestablished through lost corner proportionate methods, indicate all monuments, distances and directions used to establish. Indicate type of monument and sign post found or set.

5-16-1971 NORM LOFTUS SURVEY, FILE HB1569, SHOWS 1/4 CORNER WITH NO B.T.'S.

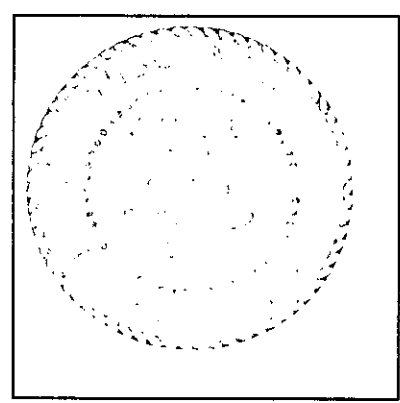
12/11/2001 I, JAMES L. WILL, FOUND 1-1/4" IRON PIPE BENT SOUTHEAST WITH A NAIL AT BASE OF PIPE WITH ONE OLD B.T.. REPLACE NAIL WITH AN ONEIDA COUNTY ALUMINUM MONUMENT AND SIGN POST 1 FOOT NORTH OF MONUMENT AND MADE 4 NEW B.T.'S AS SHOWN BELOW.

(c)(d)(e) Plan view of the corner with ties to at least 4 witness monuments. If in disagreement with previously established corner, show the distances between the two corners and also indicate the ties to the disputed.



(i) I, JAMES L. WILL R.L.S. No. 1410
 hereby certify that the corner location on this record was determined by me or under my direction and control and that this U.S. Public Land Survey Monument Record is correct and complete to the best of my knowledge and belief.

Signature JL Will Date 12/13/2001



3909250020

Index No. V-23