

U.S. PUBLIC LAND SURVEY MONUMENT RECORD

Note: This form is intended and designed to fulfill all requirements of Wisconsin Administrative Code, Chapter A-E 7.08 U.S. Public Land Survey Monument Record (3) (a) (b) (c) (d) (e) (f) (g) (h) (i). An additional sheet may be added if necessary to conform with said requirements.

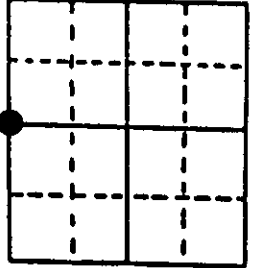
(a) Corner location: Township 39 North Corner: West 1/4 Corner

Section 30 Range 10 East Original Surveyor: Hiram Fellows

Town/City/Village Sugar Camp

Original B.T.'s: 8" Bw S40°W 58 lks
16" C. S19°E 24 lks

County Oneida

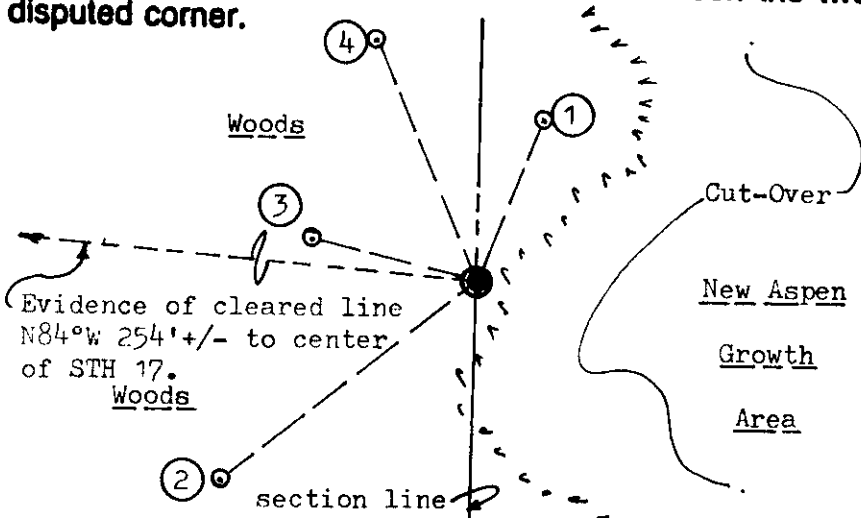


Original Survey Date: July 1859 ● Location

(b) (f) (g) (h) Description of monument found at this corner and if it was accepted, state all evidence (material, testimonial, occupational, plats, records, other monuments) used as a basis for accepting. If not accepted or if nothing was found, state evidence used as basis for establishing location. If reestablished through lost corner proportionate methods, indicate all monuments, distances and directions used to establish. Indicate type of monument found or set and sign post.

Found and accepted an old 1.5" dia. iron pipe monument with stamped 4" square by 1/4" thick plate cap welded to pipe 26" above existing grade at this corner location. All original GLO survey corner evidence is obliterated. In 1954, lacking any GLO corner evidence as well, RIPCO surveyors placed this monument by proportion between opposite section corners. I plumbed the monument for new ties and painted it with Hi-Viz orange paint; a cleared line is evidenced N84°W from the corner to STH 17, which I flagged in to the corner. A yellow wood R/W post was also found on the north edge of cleared line about 105' from STH centerline. It is about 254' from the highway centerline along the cleared line to the corner monument. I also set a standard white poly 'T' corner marker post 1' East of the corner monument. This recovery completed April 9, 1998; there were no witnesses.

(c) (d) (e) Plan view of corner with ties to at least 4 witness monuments. If in disagreement with previously established corner, show the distances between the two corners and also indicate the ties to the disputed corner.



Witness Monument Ties:

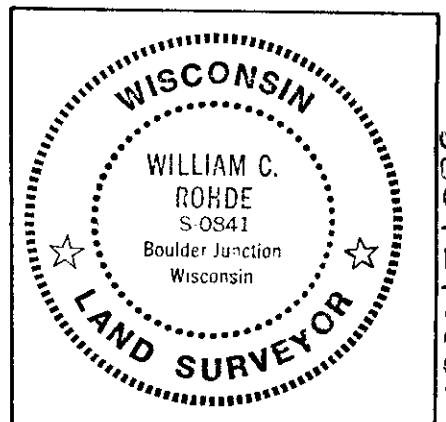
- ① New BT 6" Fb N22°E 18.18'.
- ② New BT 5" Fb S52°W 33.69'.
- ③ New BT 8" Fb N75°W 17.79'.
- ④ New BT 8" Bw N22°W 27.19'.

No older BTs were observed within sight of corner; record notes by Ripco also indicated no ties. No evidence of N/S fenceline found as previously noted by Ripco in 1954.

Unless otherwise indicated, all BT witness monument ties are to a 1/4" dia. by 2.5" long PK nail with 1.25" dia. steel washer set in unblazed right face bark; and a PK nail with 2" dia. steel washer stamped BT also set in unblazed front face bark of each BT at DBH. All previous corner recovery notes from Wisconsin DNR and/or Oneida County survey records.



Scale: 1" = 20'



(i) I, William C. Rohde, RLS 841
(type or print name) certify that the corner location on this record was determined by me or under my direction and control and that this U.S. Public Land Survey Monument Record is correct and complete to the best of my knowledge and belief.

Signature

April 10, 1998

Date

3909252000 Index No. 8-4