

CERTIFIED LAND CORNER RESTORATION

Index No. **S-24**

State of Wisconsin } ss.  
County of Oneida

I Phillip T. Hansen, do hereby  
certify that on the 1st day  
of February, 1978, I found

evidence of the NE 1/16  
corner of Section 25

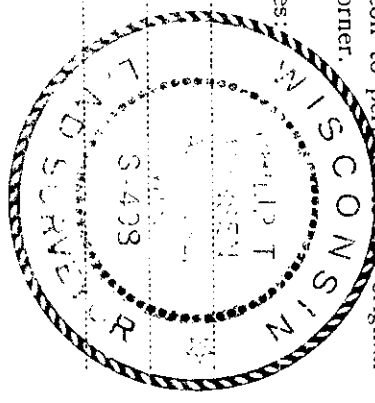
Township 39, North, Range  
9 East, Fourth Principal Meridian,

as described hereon; and that from this evidence  
I established a new monument and accessories  
as described hereon to perpetuate the original  
location of this corner.

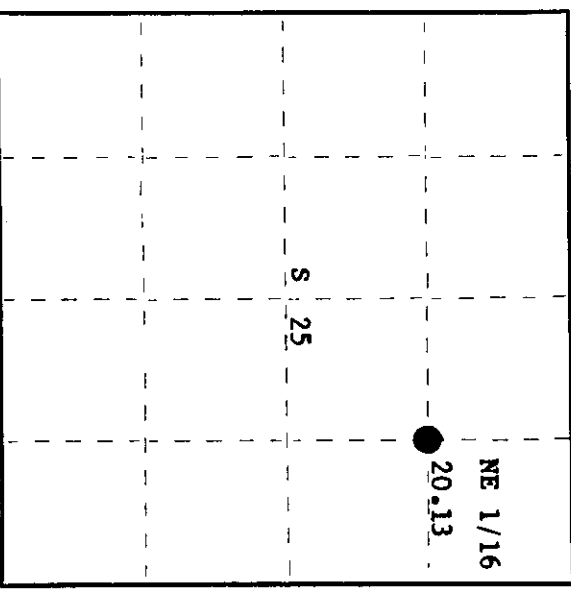
Resident witnesses:

Jim Clafin

Herb Wagoner



T39N R9E



History of original corner establishment:

Corner recovered by N. Loftus, Ripco Surveyor, in 1960. Ran random line 266° 10' magnetic  
20.13 links to close out 81 links south of NE 1/16. Corrected bearing S86° 28' W. Corner  
may have been set by Wincentzen.

Description of corner evidence found:

Recovered 5" square Black Ash post, scribed NE 1/16 - 1/16. Post was down and rotted,  
recovered point still in hole in ground.  
Recovered OBT's - Cedar 8" N78°E, 45.5 links, scribed NE 1/16 BT.  
Cedar 8" S77°W, 22.2 links, scribed NE 1/16 BT. No records available.

Description of monument and accessories I established to perpetuate the original location of this corner.

Replaced Black Ash post with 1" iron pipe with 2" brass cap, cap stamped:  
Monument projects 20" above ground.  
Marked NBT's - Cedar 6" N52°E, 21.4 links, scribed 1/16 BT.  
S498  
T39N R9E  
NE 1/16 S 25  
CPI-1978

Dated at Rhinelander, Wis., this 3rd day of February, 1978.

Signature Phillip T. Hansen Title Registered Land Surveyor Registration No. S-498  
(County Surveyor, Registered Land Surveyor, or other duly authorized official)

Office of Register of Deeds, County of Oneida  
Instrument was filed in this office for record on the 7th day of February, 1978  
at 2:00 o'clock P. M.

Doree Verage Kuehn  
(Register of Deeds)

By: \_\_\_\_\_ Deputy

3909253010