

U.S. PUBLIC LAND SURVEY MONUMENT LOCATION RECORD

Recorders Data

CORNER: South Wit MC SECTION: 27 TOWNSHIP 39 NORTH RANGE 9 EAST/WEST

FOR M.C. CORNER INDICATE: NAME OF WATERWAY Chain Lake SECTION LINE West

(CITY)(VILLAGE)(TOWN) OF: Sugar Camp COUNTY OF: Oneida

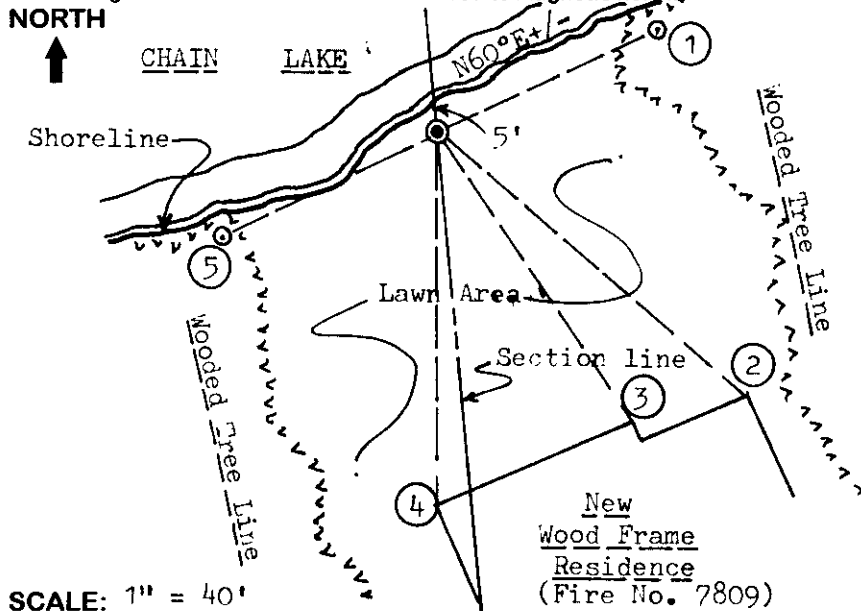
Description of monument found or placed and all other evidence used as a basis for monument location; including all monuments and related measurements required if the corner location is reestablished by lost corner proportionate methods. Also indicate name of original surveyor, survey date, corner monument set and established bearing trees, witness or reference monuments with ties from available records.

Found and accepted a 1" dia. galvanized iron pipe monument with uncapped top 3" above grade at this corner location per surveys of record described herein. In 1863, GLO Deputy Surveyor Daugherty noted setting a meander post at 34.50 chains North of SW section corner, which is now gone and would fall about 4.5 chains or nearly 300 feet South of the present shoreline of Chain Lake into an existing bog/marsh area, and in conflict with subsequent records that are referred to herein. In 1931, Hall noted he found OBT for GLO MC 2 feet into lake and he marked a new BT 24" Pw stump S40°E 0.280 chains, which is now gone. In 1944, Maine notes an MC "original" at 39.09 chains North of SW section corner per his Plat of Survey, L-1046, in Oneida County survey records. In 1952, Ilg/WCD noted he found Maines MC corner 39.00 chains North of SW section corner or 3.69 chains North of Maines West 1/4 corner. In 1987, a Plat of Survey by Romportl/Genisot was filed in Oneida County survey records as B-1560, which notes a 1" iron pipe at this MC corner by map legend, and N05°49'00"W 242.88' or 3.68 ch from Maines West 1/4 corner. In 1991, Weber/Eagle Landmark, also notes a 1" iron pipe at this MC corner by map legend per his Plat of Survey filed as B-2381 in Oneida County survey records.

I drove a standard 2" dia. by 30" long split bottom aluminum pipe monument with stamped Oneida County aluminum cap over the existing iron pipe found to 2" above grade.

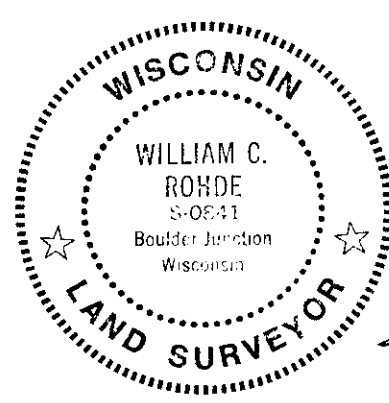
This recovery completed May 20, 1998; there were no witnesses.

Plan view map of monument location with bearing and distance ties to a minimum of four(4) described witness or reference monuments of concrete, natural stone, iron, live bearing trees or equivalent material. If applicable, also show a minimum of two(2) bearing and distance ties to any other monument found and not accepted; including the bearing and distance from the accepted monument. Indicate the basis for bearings of reference ties if not referenced to magnetic north.



- WITNESS MONUMENT TIES:**
- ① 1" dia. iron pipe of record found N64°E 50.65'.
 - ② Corner of concrete block foundation S50°E 84.47' at grade.
 - ③ Corner of concrete block foundation S34°E 72.25'.
 - ④ Corner of concrete block foundation South 77.95'.
 - ⑤ 1 1/4" dia. 12" high iron pipe found S64°W 50.10'.
- Note: No standard white poly 'T' post set near corner as in lawn area.

Unless otherwise indicated, all bearing tree ties are to a .25" dia. by 2.5" long PK nail with a 1.25" dia. steel washer driven into unblazed right face and a .25" dia. by 2.5" long PK nail with a 2" dia. steel washer stamped 'BT' is also driven into unblazed face of bearing tree at DBH; the basis for measured bearings is magnetic to nearest degree and all tie distances are horizontal measure to nearest 1/100th feet.



LAND SURVEYOR CERTIFICATION:

I, William C. Rohde, hereby certify that I am a duly licensed Professional Land Surveyor in Wisconsin, that this USPLS monument location was determined by me or under my direction and control, and that this U.S. Public Land Survey Monument Location Record is true and correct to the best of my knowledge and belief.

William C. Rohde Date: 5-22-98
Signature

	2	7	

SECTION LOCATION MAP
INDEX NO. S-T 13
3909282100

RLS SEAL
SHEET NO. 1 OF 1

This form is intended to fulfill requirements of Chapter A-E 7.08 (3)(a)(b)(c)(d)(e)(f)(g)(h)(i) U.S. Public Land Survey Monument Location Record, Wisconsin Administrative Code. Use reverse side for geodetic location data and/or continuation purposes.

INDEX NO. S-T 13