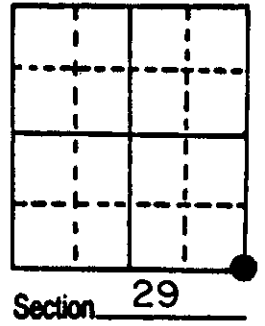
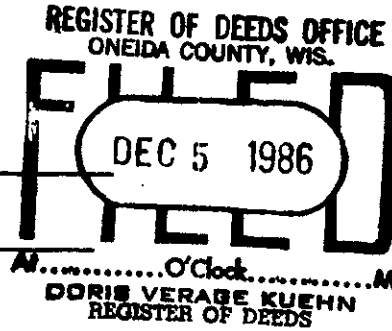


# U.S. PUBLIC LAND SURVEY MONUMENT RECORD

**Note:** This form is intended and designed to fulfill all requirements of Wisconsin Administrative Code, Chapter A-E 5.02, U.S. Public Land Survey Monument Record (3) (a) (b) (c) (d) (e) (f) (g) (h) (i). An additional sheet may be added if necessary to conform with said requirements.

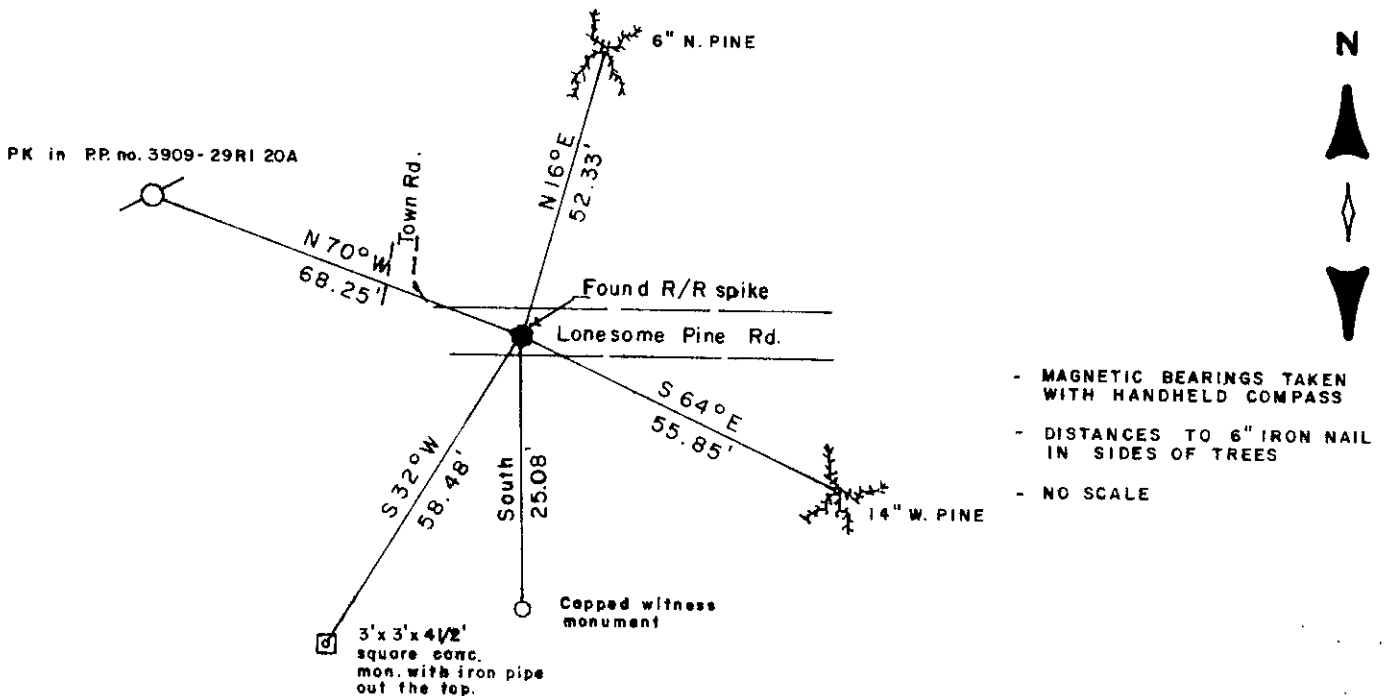
(a) Corner location: Township 39 North  
 Range 9 East ~~West~~  
 Town/City/Village Sugar Camp  
 County Oneida



(b) (f) (g) (h) Description of monument found at this corner and if it was accepted, state all evidence (material, testimonial, occupational, plats, records, other monuments) used as a basis for accepting. If not accepted or if nothing was found, state evidence used as basis for establishing location. If reestablished through lost corner proportionate methods, indicate all monuments, distances and directions used to establish.

- 1863 W.E. Daugherty established corner.
- 1950 Hugh B. Crawford, a surveyor with the Bureau of Land Management determined the corner position of 28-29-32-33 from an original bearing tree, the corner falls in the north track of a graded road E-W, he set a concrete monument for the corner and made the following witnesses; W. Pine orig. BT. 24", N 16° E, 13 lks. , with burnt out blaze and new marks BT 29/28/32/33; 2" x 30" capped iron pipe, North, 38 lks.; 2" x 30" capped iron pipe, South, 38 lks.; 10" Popple, N 50 1/2° E, 73 1/2 lks.; 5" Popple, S 45 3/4° E, 66 1/2 lks.; 4" Popple, S 79° W, 155 lks.; 6" Popple, N 33 1/2° W, 50 lks.
- 1986 I found a railroad spike set by N. Loftus at the corner and the capped reference pipe South, 25.08'. All other witnesses set by Crawford have been destroyed. I witnessed the corner as shown below.

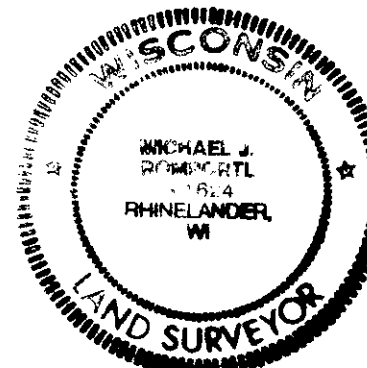
(c) (d) (e) Plan view of corner with ties to at least 4 witness monuments. If in disagreement with previously established corner, show the distances between the two corners and also indicate the ties to the disputed corner.



(i) I, Michael J. Romportl R.L.S. 1624  
 (type or print name) certify that the corner location on this record was determined by me or under my direction and control and that this U.S. Public Land Survey Monument Record is correct and complete to the best of my knowledge and belief.

Michael J. Romportl Oct 27, 1986  
 Signature Date

GENISOT & ASSOCIATES INC.  
 1512 EAGLE ST., RHINE, WI.



Index No. 159

3909290000

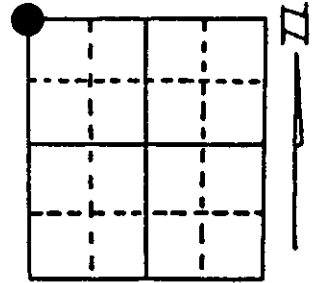
# U.S. PUBLIC LAND SURVEY MONUMENT RECORD

**Note:** This form is intended and designed to fulfill all requirements of Wisconsin Administrative Code, Chapter A-E 7.08 U.S. Public Land Survey Monument Record (3) (a) (b) (c) (d) (e) (f) (g) (h) (i). An additional sheet may be added if necessary to conform with said requirements.

(a) Corner location: Township 39 North  
 Range 9 East/West

Town/City/Village Sugar Camp

County Oneida



Section 33

(b) (f) (g) (h) Description of monument found at this corner and if it was accepted, state all evidence (material, testimonial, occupational, plats, records, other monuments) used as a basis for accepting. If not accepted or if nothing was found, state evidence used as basis for establishing location. If reestablished through lost corner proportionate methods, indicate all monuments, distances and directions used to establish. Indicate type of monument found or set and sign post.

1863 - Wm. Daugherty established this corner at 80.00 chains and set a wood post with two BTs:

10" White Pine, N16°E, 13 Links (8.58') 8" Hemlock, S3°E, 11 Links (7.26')

1950 - 1952 - Hugh B. Crawford, from BLM, restored corner from original 24" Pine BT, N16°E, 13 Links. As corner falls in road, he set Witness Corners, North and South, 38 Links (25.08'). Also four BTs:

10" Aspen, N50½°E, 73½ Links (48.51') 5" Aspen, S45 ¾°E, 66½ Links (43.89')  
 4" Aspen, S79°W, 155 Links (102.30') 6" Aspen, N33½°W, 50 Links (33.00')

1986 - Mike Romportl found R.R. spike in surface of road. Set by Loftus 38 Links North of BLM Witness Corner. Made four new BTs:

6" Red Pine, N16°E, 52.33' 14" White Pine, S64°E, 55.85'  
 Power Pole, N70°W, 68.25' 3' x 3' x 4½' Concrete/Iron Pipe, S32°W, 58.48'

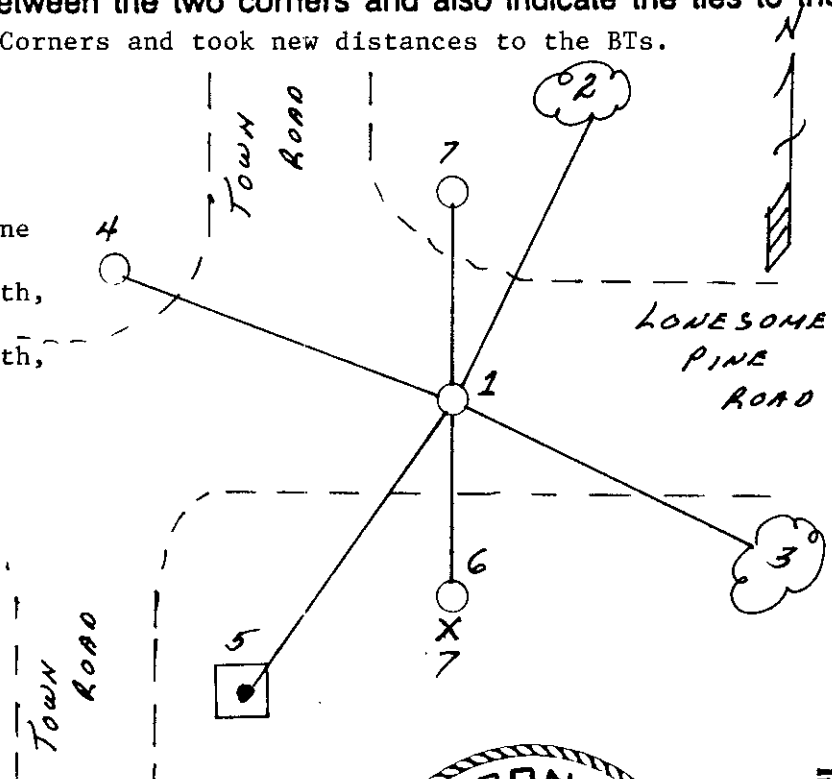
5/23/1995 - Milo E. Stefan found R.R. spike in road surface improperly located from BLM's Witness Corners which are both in place and do not appear to be disturbed.

Therefore, removed the erroneous R.R. spike and placed it in the proper position

(c) (d) (e) Plan view of corner with ties to at least 4 witness monuments. If in disagreement with previously established corner, show the distances between the two corners and also indicate the ties to the disputed corner. from the BLM Witness Corners and took new distances to the BTs.

- 1) Railroad spike in blacktop
- 2) 8" Red Pine, N16°E, 52.13' \*
- 3) 14" White Pine, S64°E, 55.86' \*
- 4) Power Pole, N70°W, 68.77' \*
- 5) Iron pipe in concrete and fieldstone  
3' x 3' x 4', S32°W, 58.48
- 6) 2½" x 30" Iron pipe/brass cap, South,  
25.08' (BLM Monument)
- 7) 2½" x 30" Iron pipe/brass cap, North,  
25.08' (BLM Monument)
- 8) Plastic Sign Post, South, 25.2'

\* Distances to nail in side of BTs.  
 BT tags to face of each BT.



(i) I, Milo E. Stefan  
 (type or print name) certify that the corner location on this record was determined by me or under my direction and control and that this U.S. Public Land Survey Monument Record is correct and complete to the best of my knowledge and belief.

Milo E Stefan  
 Signature

July 10, 1995  
 Date



Index No. V-9

3909290000

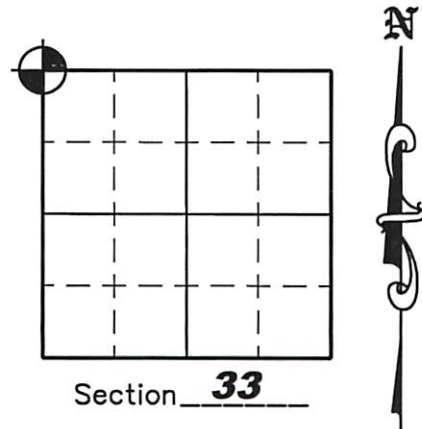
# U.S. PUBLIC LAND SURVEY MONUMENT RECORD

NOTE: This form is intended and designed to fulfill all requirements of Wisconsin Administrative Code, Chapter A-E 7.08 U.S. Public Land Survey Monument Record (3)(a)(b)(c)(d)(e)(f)(g)(h)(i). An additional sheet may be added if necessary to conform with said requirements.

(a) Corner location: Township 39 North  
Range 09 East

Town of SUGAR CAMP

County of ONEIDA



(b)(f)(g)(h) Description of monument found at this corner and if it was accepted, state all evidence (material, testimonial, occupation, plats, records, other monuments) used as a basis for accepting. If not accepted or if nothing was found, state evidence used as a basis for establishing location. If reestablished through lost corner proportionate methods, indicate all monuments, distances and directions used to establish. Indicate type of monument found or set and sign post.

May 23, 1995 – Milo E. Stefan found a Railroad Spike in road surface improperly located from BLM's Witness Corners which are both in place and do not appear to be disturbed. Therefore, removed the erroneous Railroad spike and placed it in proper position – See U.S.P.L.S Monument Record dated July 10, 1995.

July 29, 2004 – Due to road construction Nicolet Surveyors, Inc. was contacted by the Oneida County Land Information Office to preserve the location of this survey marker. Jonathan W. Dulin found a 60 D Nail approximately 4' North of the centerline of Hideaway Drive in a large hole along with 3 witness corners and one bearing tree. We set new witness corners as shown below.

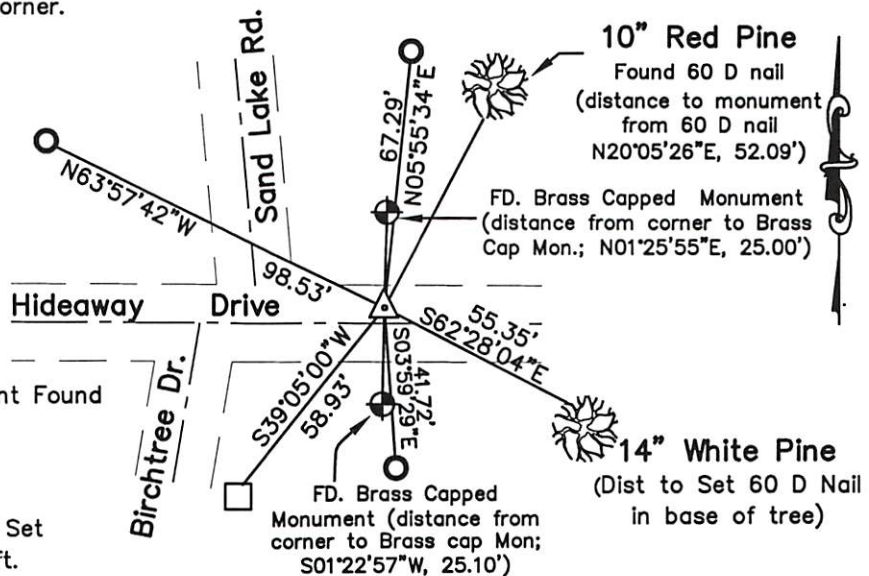
August 12, 2005 – After Road construction was complete we reset a P.K. Nail at this location.

(c)(d)(e) Plan view of corner with ties to at least 4 witness monuments. If in disagreement with previously established corner, show the distances between the two corners and also indicate the ties to the disputed corner.

Scale: 1" = 50'

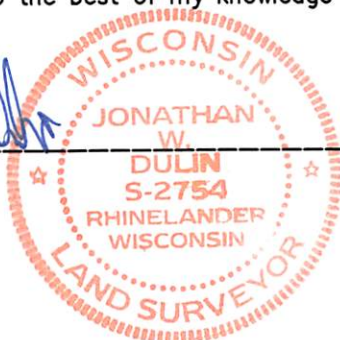
## LEGEND

- P.K. Nail Set
- Brass Capped Monument Found
- 3' by 3' Stone Found
- 3/4" x 24" Iron rebar Set Weighing 1.50 lbs/lin. ft.



(i) I, Jonathan W. Dulin, certify that the corner location on this record was determined by me under my direction and control and that this U.S. Public Land Survey Monument is correct and complete to the best of my knowledge and belief.

Signature [Handwritten Signature] Date 10-8-2007



REGISTER OF DEEDS OFFICE  
ONEIDA COUNTY, WIS.



At \_\_\_\_\_ O'Clock \_\_\_\_\_ M  
THOMAS H. LEIGHTON  
REGISTER OF DEEDS

REGISTER OF DEEDS OFFICE  
ONEIDA COUNTY  
FILED

APR 29 2022

KYLE J. FRANSON  
REGISTER OF DEEDS

3909290000

Index No. V-9