

U.S. PUBLIC LAND SURVEY MONUMENT RECORD

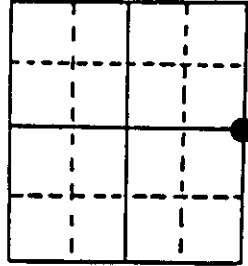
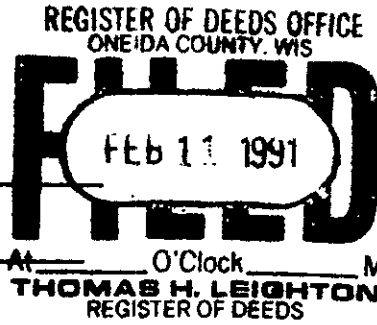
Note: This form is intended and designed to fulfill all requirements of Wisconsin Administrative Code, Chapter A-E 7.08 U.S. Public Land Survey Monument Record (3) (a) (b) (c) (d) (e) (f) (g) (h) (i). An additional sheet may be added if necessary to conform with said requirements.

(a) Corner location: Township 39 North

Range 9 East West

Town/City/Village Sugar Camp

County ONEIDA

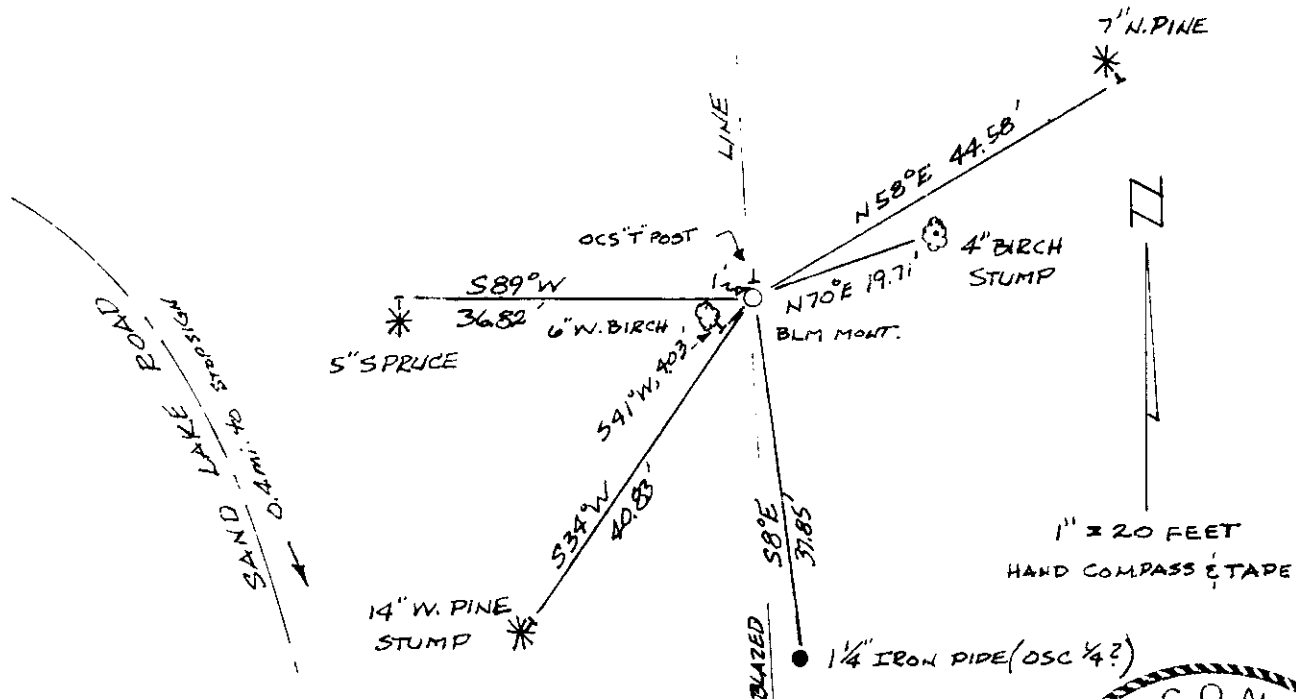


Section 29

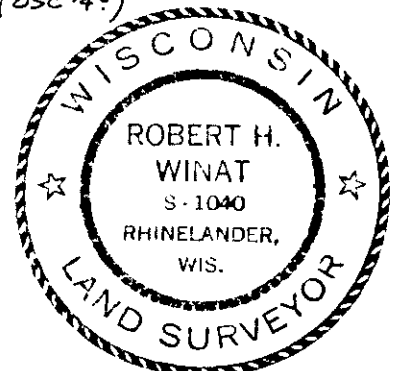
(b) (f) (g) (h) Description of monument found at this corner and if it was accepted, state all evidence (material, testimonial, occupational, plats, records, other monuments) used as a basis for accepting. If not accepted or if nothing was found, state evidence used as basis for establishing location. If reestablished through lost corner proportionate methods, indicate all monuments, distances and directions used to establish. Indicate type of monument found or set and sign post.

Orig. Wm. Daugherty, Sept. 1863- North betwn. Sec's 28 & 29 (var 8°E) 40.00 chns. Set 1/4 post; BT's 10" birch S28°W, 151 lks. & 8" Hemlock N76°E, 191 lks.; 64.50 chns. enter tamarac swamp (E-W)..... Late 1940's 1/4 corner set by Oneida County Surveyor/BLM notes. August 1950 - Dependent resurvey & extn. Sec. 29 Hugh B. Crawford, BLM surveyor, North 6°16' West, betwn. Sec's 28 & 29 blazing true line...; 28.10 chns. logging trail; 29.14 chns. a popple post (1/4 by OCS) East, 2 1/2 lks.; 29.72 chns. proportionate distance (no evidence of orig. post or BT's) Set 2" iron pipe w/brass-cap marked....; BT's 4" birch N73°E, 30 lks. (19.80'), 10" W. pine, S33-3/4°W, 62 1/2 lks. (41.25') - also marked for OCS 1/4 Corner. 26 Jan. '91 Find blazed BLM line, dig up buried BLM mont. (down 2") - driven by sledgehammer; BT's cut, 4" Birch (rotten stump) set 60d nail vertically in top N70°E, 19.71' & 14" W. Pine stp. (rotting) - scribing visible both faces S34°W, 40.83' to 60d nail set in faces; S8°E, 37.85' to found 1 1/4" org. iron pipe w/union & up 3', apparently OCS 1/4 location (37.85' vs 38.28' to nearest link), set 16d nail in 6" W. Birch (rotted out faces NE & SE) S+1°W, 4.03'; New BT's w/16d nails 5" Spruce S89°W, 36.82', 7" N. Pine N58°E, 44.58'. Set "T" plastic post north 1 foot. All BT's painted red. Obvious that this corner obscured because of conflict w/OCS 1/4 & 1/16's N & S.

(c) (d) (e) Plan view of corner with ties to at least 4 witness monuments. If in disagreement with previously established corner, show the distances between the two corners and also indicate the ties to the disputed corner.



(i) Robert H. Winat, Land Surveyor # 1040
 (type or print name) certify that the corner location on this record was determined by me or under my direction and control and that this U.S. Public Land Survey Monument Record is correct and complete to the best of my knowledge and belief.



Robert H. Winat
 Signature

Date 1 Feb. 1991

Stamp 3909292000

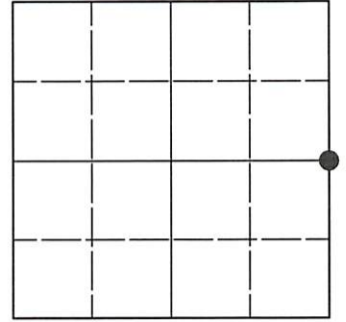
Index No. T-9

U.S. PUBLIC LAND SURVEY MONUMENT RECORD

Note: This form is intended and designed to fulfill all requirements of Wisconsin Administrative Code, Chapter A-E 7.08 U.S. Public Land Survey Monument Record (3)(a-i).

(a) CORNER LOCATION
 1/4 Cor. of Secs. 28 & 29
 Township 39 North
 Range 9 East of the 4th P.M.
 Town of Sugar Camp
 County of Oneida

WISCRS - Oneida County
 N: 237,791.28 USft
 E: 270,749.31 USft
 Datum: NAD 83(2011) ep. 2010.00
 GNSS Method: RTN - Offset
 GNSS Control: WISCORS VRS



Sec. 29, T. 39 N., R. 9 E.

(b)(f)(g)(h) Description of monument found at this corner and if it was accepted, state all evidence (material, testimonial, occupational, plats, records, other monuments) used as a basis for accepting. If not accepted or if nothing was found, state evidence used as basis for establishing location. If re-established through lost corner proportionate methods, indicate all monuments, distances and directions used to establish. Indicate type of monument and sign post found or set.

This record is a perpetuation of the following land corner document(s):

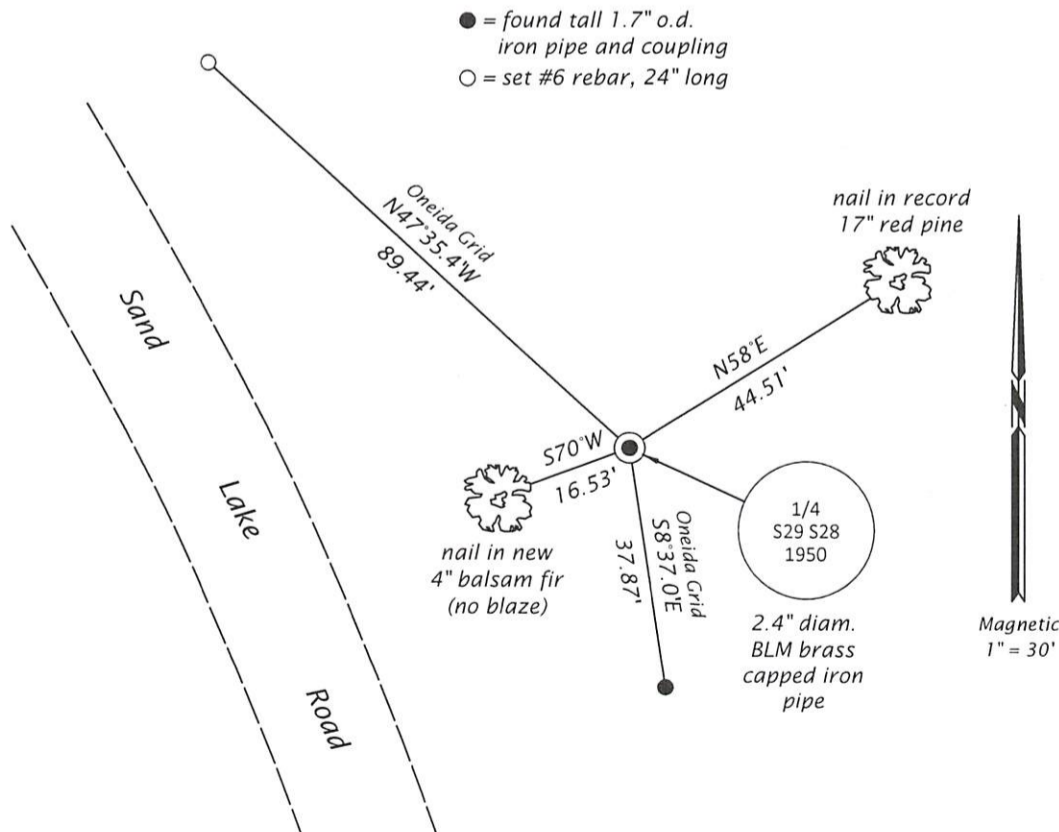
February 1, 1991: USPLS Monument Record by Robert H. Winat, filed in Oneida County

A complete history of the corner can be found on the previous land corner document(s). I accept the record activity as a true and faithful perpetuation or reestablishment of the original corner location and further perpetuate it as described below.

July 18, 2023: I found and accepted the record monument, a 2.4" diam. iron pipe, firmly set, with a 3.3" diam. BLM brass cap flush with the ground surface. The cap has been beaten in the past. The 5" spruce and 6" birch record bearing trees are gone. I found or established accessories as indicated below. I found a white vinyl sign post bearing Northeast, 0.8 ft.

The coordinate value shown has been determined by traversing from two or more GNSS offset points satisfying the accuracy requirements defined and qualified in the 2022 Oneida County Fee Schedule for USPLS Corners.

(c)(d)(e) Plan view of corner with ties to at least 4 witness monuments. If in disagreement with previously established corner, show the distances between the two corners and also indicate the ties to the disputed.



REGISTER OF DEEDS OFFICE
 ONEIDA COUNTY
 FILED

AUG 07 2023

KYLE J. FRANSON
 REGISTER OF DEEDS

(i) I, Jeffrey W. Austin, Professional Land Surveyor No. S-1885, hereby certify that the corner location on this record was determined by me or under my direction and control and that this U.S. Public Land Survey Monument Record is correct and complete to the best of my knowledge and belief.

[Handwritten Signature]

 Signature

AUG-1, 2023

 Date