

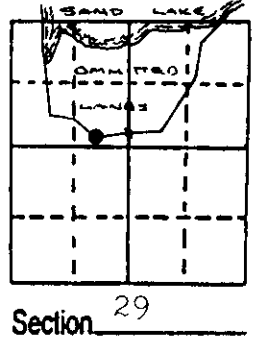
U.S. PUBLIC LAND SURVEY MONUMENT RECORD

Note: This form is intended and designed to fulfill all requirements of Wisconsin Administrative Code, Chapter A-E 7.08 U.S. Public Land Survey Monument Record (3) (a) (b) (c) (d) (e) (f) (g) (h) (i). An additional sheet may be added if necessary to conform with said requirements.

(a) Corner location: Township 39 North
 Range 9 East/West

Town/City/Village Sugar Camp

County Oneida



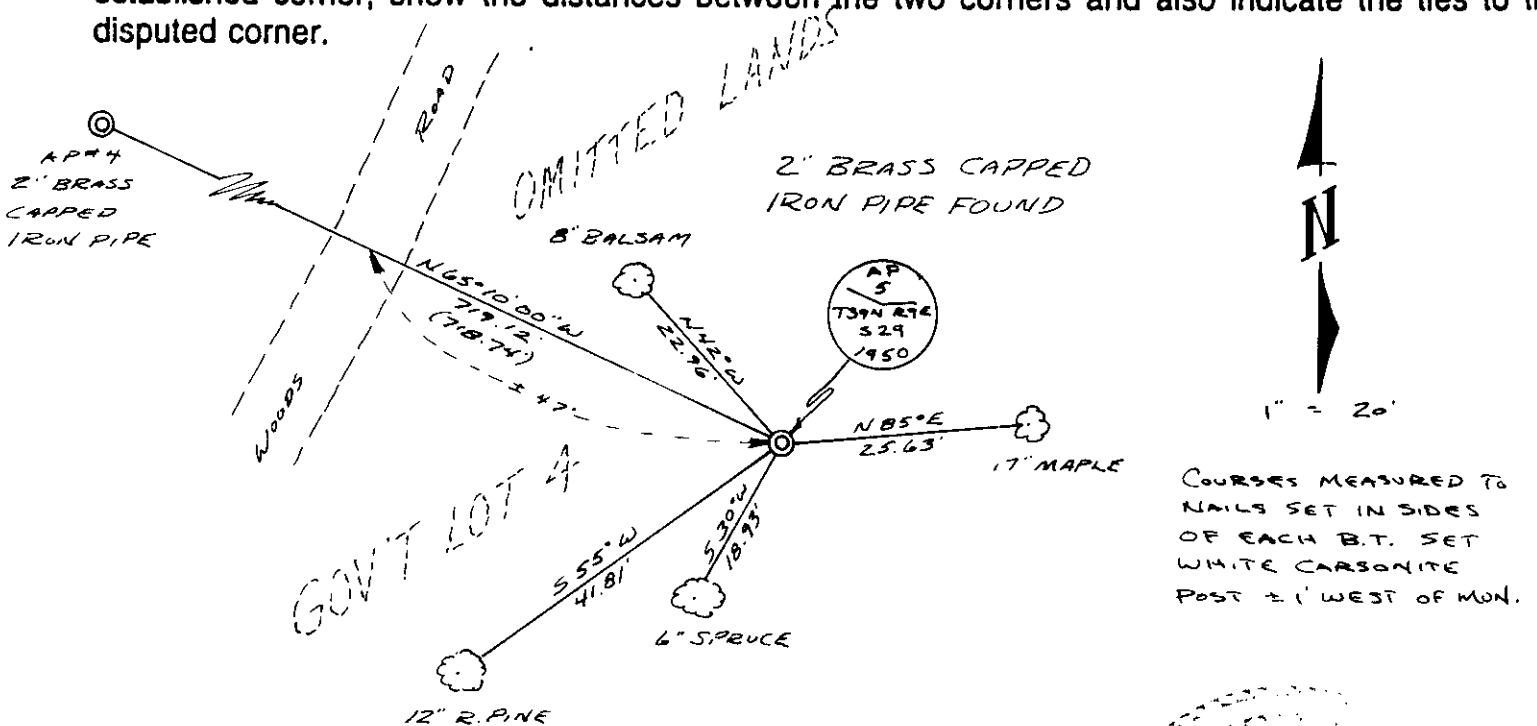
(b) (f) (g) (h) Description of monument found at this corner and if it was accepted, state all evidence (material, testimonial, occupational, plats, records, other monuments) used as a basis for accepting. If not accepted or if nothing was found, state evidence used as basis for establishing location. If reestablished through lost corner proportionate methods, indicate all monuments, distances and directions used to establish. Indicate type of monument found or set and sign post.

September, 1863 - WM. E. Daugherty states he meandered Sand Lake, but he did not monument his interior meander line.

August, 1950 - Hugh B. Crawford (B.L.M.), as part of an extension survey of omitted lands, retraced the original gov't surveyed meander line to include AP#5. At said AP he set a 2" brass capped iron pipe.

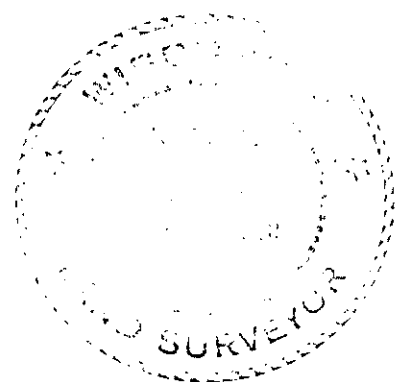
August, 2001 - I found Crawford's monument at AP#5 and accepted it as same. I restored it as shown below.

(c) (d) (e) Plan view of corner with ties to at least 4 witness monuments. If in disagreement with previously established corner, show the distances between the two corners and also indicate the ties to the disputed corner.



(i) I, Keith A. Zarm RLS - 2425
 (type or print name) certify that the corner location on this record was determined by me or under my direction and control and that this U.S. Public Land Survey Monument Record is correct and complete to the best of my knowledge and belief.

Keith A. Zarm
 Signature Date 24 AUG 01



3909292127
 Stamp

Index No. S-T 6-7