

U.S. PUBLIC LAND SURVEY MONUMENT RECORD

Note: This form is intended and designed to fulfill all requirements of the Wisconsin Administrative Code, Chapter A-E 7.08 U.S. Public Land Monument Record (3)(a)(b)(c)(d)(e)(f)(g)(h)(i). An additional sheet may be added if necessary to conform with said requirements.

FILED

MAY 25 2017

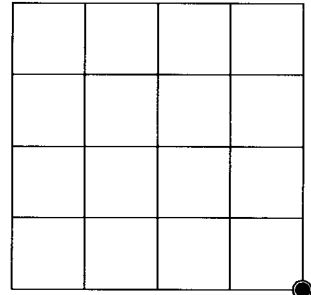
(a) CORNER LOCATION: WISCRS - Oneida County
 Southeast Corner of Section 30
 Township 39 North
 Range 9 East
 Town of Sugar Camp
 County of Oneida

North: 235714.735 USft
 East: 265288.598 USft
 Latitude: 45° 49' 56.68189" N
 Longitude: 89° 24' 21.66806" W
 Datum: NAD 83(2011)
 GNSS Method: RTK - Offset
 GNSS Control: WISCORS VRS
 Record North: 235714.617 USft
 Record East: 265288.467 USft
 Record Datum: NAD 83(1991)

AT O'CLOCK M
 RYLE J. FRANSON
 REGISTER OF DEEDS

(RECORDING AREA)

SECTION 30



(b) HISTORY OF ORIGINAL CORNER ESTABLISHMENT

Original Surveyor: William E. Dougherty
 Date of Survey: Commenced September 22, 1863
 Completed September 29, 1863
 Original B.T.'S: Yellow Pine 18" N 52°E 25 lks.
 White Pine 20" S 53°W 25 lks.

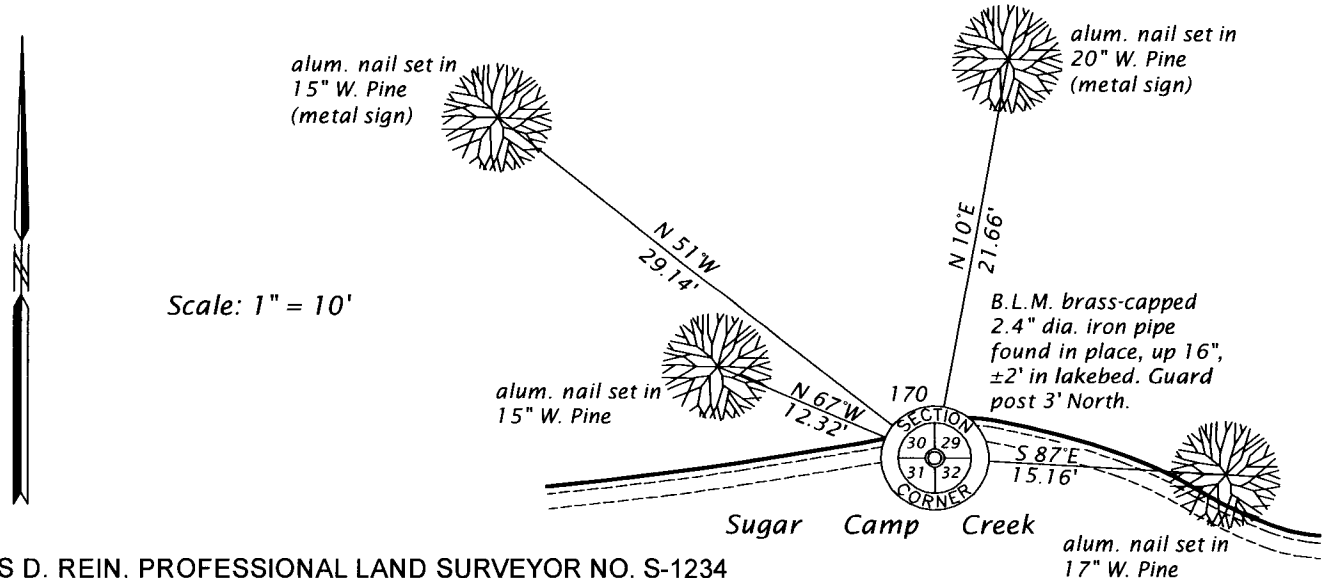
(f)(g)(h) DESCRIPTION OF MONUMENT FOUND AT THIS CORNER AND IF IT WAS ACCEPTED, STATE ALL EVIDENCE (MATERIAL, TESTIMONIAL, OCCUPATIONAL, PLATS, RECORD, OTHER MONUMENTS) USED AS A BASIS FOR ESTABLISHING LOCATION. IF NOT ACCEPTED OR IF NOTHING WAS FOUND, STATE EVIDENCE USED AS BASIS FOR ESTABLISHING LOCATION. IF REESTABLISHED THROUGH LOST CORNER PROPORTIONATE METHODS, INDICATE ALL MONUMENTS, DISTANCES AND DIRECTIONS USED TO ESTABLISH. INDICATE TYPE OF MONUMENT AND SIGN POST FOUND OR SET.

August 14 - 15, 1950 - Hugh B. Crawford, Associate Cadastral Engineer, B.L.M., field notes for a Dependent Resurvey and Extension Survey, Including Land Erroneously Omitted from the Original Survey in Section 29, T39N, R9E, recovered a 1 1/2" diam. iron pipe witnessed by local bearing trees and recognized by the adjoining owners as being properly located and is accepted as being the best available evidence of the position of the original corner. Local bearing trees: jack pine 11" (Vaughn 1922) N60°W, 10 links; and fallen jack pine 12" S11°E, 25 1/2 links. Set iron post 2" diam. with a brass cap, referenced by: birch 8" East, 23 1/2 links; jack pine 5" S67°W, 18 1/2 links; jack pine 11" N60°W, 10 links.

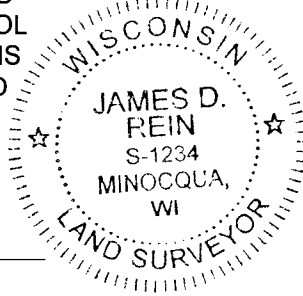
February 20, 2017 - James D. Rein, PLS No. 1234, we recovered the B.L.M. brass capped iron pipe, which I accept as monumenting the true corner, and made new reference ties as shown in the plan. There is a an up rooted 20" red pine approximately N60°W, ±6 feet laying in creek.

The coordinate value shown has been verified by at least one of the following methods: 1) comparison to a previously GPS determined published value; 2) the value is the average of two or more GPS observations at a markedly different time; 3) one or more distances were measured back to the GPS observed corner from temporary GPS observed offset locations.

(c)(d)(e) PLAN VIEW OF CORNER WITH TIES TO AT LEAST 4 WITNESS MONUMENTS. IF IN DISAGREEMENT WITH PREVIOUSLY ESTABLISHED CORNER, SHOW THE DISTANCE BETWEEN THE TWO CORNERS AND ALSO INDICATE THE TIES TO THE DISPUTED CORNER.



(i) I, JAMES D. REIN, PROFESSIONAL LAND SURVEYOR NO. S-1234 HEREBY CERTIFY THAT THE CORNER LOCATION ON THIS RECORD WAS DETERMINED BY ME OR UNDER MY DIRECTION AND CONTROL AND THAT THIS U.S. PUBLIC LAND SURVEY MONUMENT RECORD IS CORRECT AND COMPLETE TO THE BEST OF MY KNOWLEDGE AND



SIGNATURE

5-12-17
 DATE

INDEX NO. V - 5
 3909300000