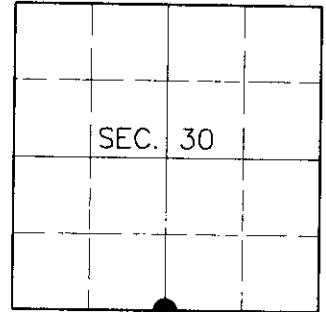


U.S. PUBLIC LAND SURVEY MONUMENT RECORD

Note: This form is intended and designed to fulfill all requirements of Wisconsin Administrative Code, Chapter A-E 7.08, U.S. Public Land Survey Monument Record (3)(a)(b)(c)(d)(e)(f)(g)(h)(i). An additional sheet may be added if necessary to conform with said requirements.

(a) CORNER LOCATION
 South ¼ Corner of Section 30
 Township 39 North
 Range 9 East
 Town of Sugar Camp

State Plane Coordinates
 X
 Y
 Datum
 County of Oneida



(b) HISTORY OF ORIGINAL CORNER ESTABLISHMENT

Original Surveyor: William E. Daugherty

Original Bearing Trees:

Date of Survey: Commenced Sept. 22, 1863
 Completed Sept. 29, 1863

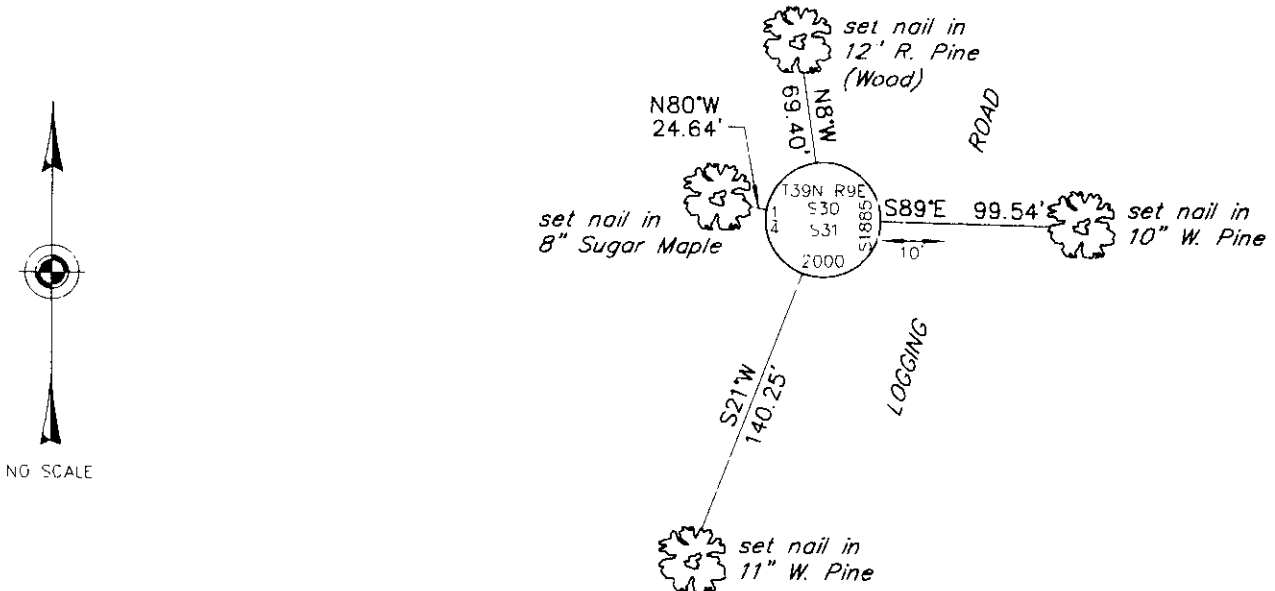
Y. Pine 18 N28°W, 14 links
 Birch 10 S26°E, 8 links

(b)(f)(g)(h) Description of monument found at this corner and if it was accepted, state all evidence (material, testimonial, occupational, plats, records, other monuments) used as a basis for accepting. If not accepted or if nothing was found, state evidence used as basis for establishing location. If reestablished through lost corner proportionate methods, indicate all monuments, distances and directions used to establish. Indicate type of monument and sign post found or set.

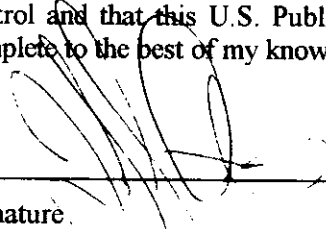
October 21, 1980: As described in OCS Map #L-635, W.B. Wood found a ¼" dia. iron pipe near the corner location. He set a WCD iron pipe from record bearing trees ignoring the iron pipe. He notes the following bearing trees: PW 17" S78°W, 1.144 ch.; Twin OR 11" N18°W, 1.023 ch.; PR 7" N11°W, 1.053 ch.; BW 12" S81°E, 0.966 ch.

June 17, 2000: I found and accepted a recent 1" dia., 24" long iron pipe with the following accessories: (Wood) W. Birch stump S80°E, 64.0 feet; (Wood) W. Pine stump 24" S77°W, 75.7 feet; (Wood) Twin Oak stump 12" N17°W, 67.4 feet. I found no evidence of Wood's WCD pipe or the old ¼" dia. iron pipe he mentions. I replaced the pipe with a 2-½" dia., 30" long aluminum pipe with cast aluminum pointed base and 3-¼" dia. Oneida County aluminum cap flush with the ground and marked as shown below. I established accessories as show below and set a plastic sign post Southwest, 1 foot.

(c)(d)(e) Plan view of corner with ties to at least 4 witness monuments. If in disagreement with previously established corner, show the distances between the two corners and also indicate the ties to the disputed corner.



(i) I, Jeffrey W. Austin, Registered Land Surveyor S-1885, hereby certify that the corner location on this record was determined by me or under my direction and control and that this U.S. Public Land Survey Monument Record is correct and complete to the best of my knowledge and belief.

Signature:  Date: 7-27-00



INDEX NO. V-3

3909300020