

U.S. PUBLIC LAND SURVEY MONUMENT RECORD

Note: This form is intended and designed to fulfill all requirements of the Wisconsin Administrative Code, Chapter A-E 7.08 U.S. Public Land Monument Record (3)(a)(b)(c)(d)(e)(f)(g)(h)(i). An additional sheet may be added if necessary to conform with said requirements.

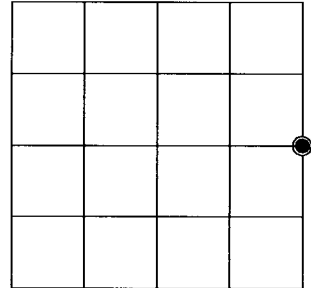
FILED
MAY 25 2017
AT O'CLOCK
KYLE J. FRANSON
REGISTER OF DEEDS

(a) CORNER LOCATION:
East Quarter Corner of Section 30
Township 39 North
Range 9 East
Town of Sugar Camp
County of Oneida

WISCRS - Oneida County
North: 238345.978 USft
East: 265235.125 USft
Latitude: 45° 50' 22.65719" N
Longitude: 89°24' 22.35902" W
Datum: NAD 83(2011)
GNSS Method: RTK - Direct
GNSS Control: WISCRS VRS
Record North: 238345.981 USft
Record East: 265235.109 USft
Record Datum: NAD 83(1991)

(RECORDING AREA)

SECTION 30



(b) HISTORY OF ORIGINAL CORNER ESTABLISHMENT

Original Surveyor: William E Dougherty
Date of Survey: Commenced September 22, 1863
Completed September 29, 1863
Original B.T.'S: Tamarack 6" N 11°W 33 lks.
Tamarack 6" S 52°E 15 lks.

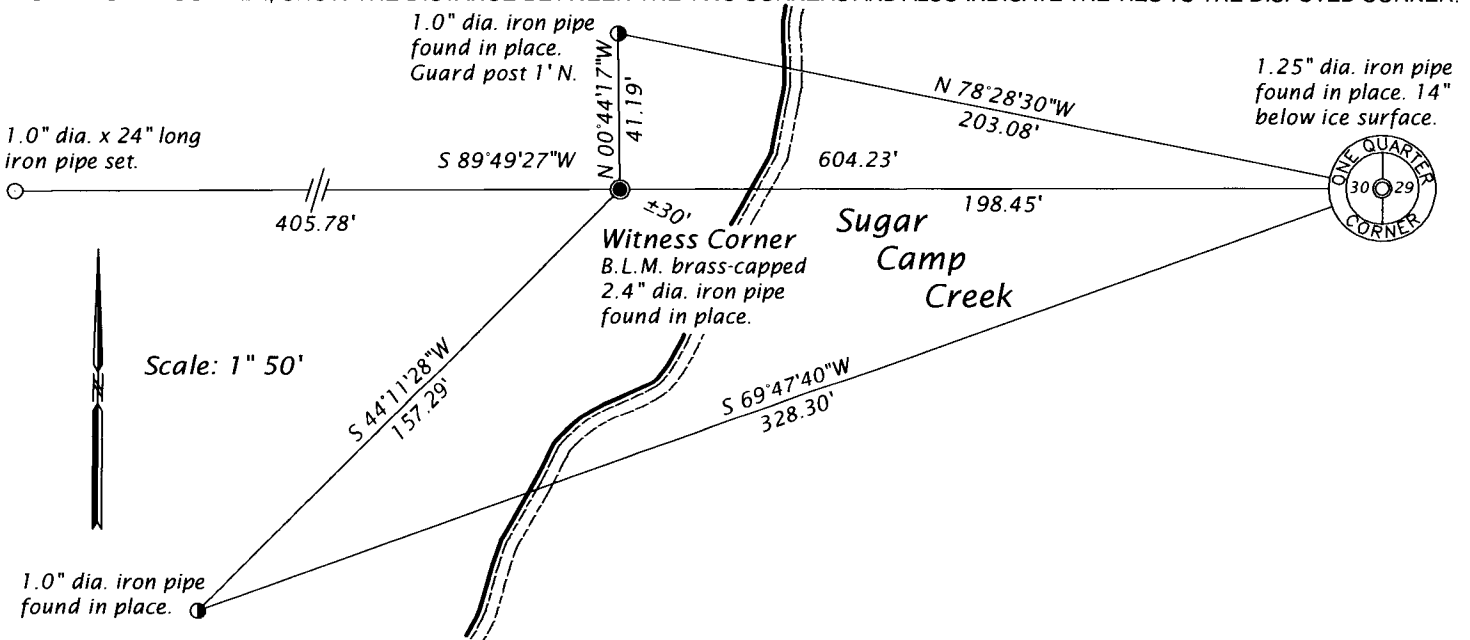
(f)(g)(h) DESCRIPTION OF MONUMENT FOUND AT THIS CORNER AND IF IT WAS ACCEPTED, STATE ALL EVIDENCE (MATERIAL, TESTIMONIAL, OCCUPATIONAL, PLATS, RECORD, OTHER MONUMENTS) USED AS A BASIS FOR ESTABLISHING LOCATION. IF NOT ACCEPTED OR IF NOTHING WAS FOUND, STATE EVIDENCE USED AS BASIS FOR ESTABLISHING LOCATION. IF REESTABLISHED THROUGH LOST CORNER PROPORTIONATE METHODS, INDICATE ALL MONUMENTS, DISTANCES AND DIRECTIONS USED TO ESTABLISH. INDICATE TYPE OF MONUMENT AND SIGN POST FOUND OR SET.

August 14 - 25, 1950 - Hugh B. Crawford, Associate Cadastral Engineer, BLM, field notes for a Dependent Resurvey and Extension Survey, including Land Erroneously Omitted from the Original Survey in Section 29, T39N, R9E - recovered an iron pipe, setting under 4 feet of flowage water, witnessed by an original bearing tree: tamarack stub, 6" diam. S52°E, 15 lks. Set a witness corner, iron post 2" diam. with a brass cap, West, 3.00 chains, referenced by: maple 6 ins. N55°W, 24 lks. and a maple 6 ins. S35°W, 66 1/2 lks.

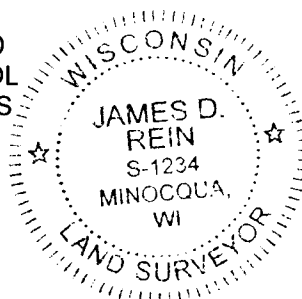
February 20, 2017 - James D. Rein, PLS No. 1234, we recovered a 1.25" diam. iron pipe, witnessed by the B.L.M. brass capped iron pipe and made new ties to the corner as shown in the plan.

The coordinate value shown has been verified by at least one of the following methods: 1) comparison to a previously GPS determined published value; 2) the value is the average of two or more GPS observations at a markedly different time; 3) one or more distances were measured back to the GPS observed corner from temporary GPS observed offset locations.

(c)(d)(e) PLAN VIEW OF CORNER WITH TIES TO AT LEAST 4 WITNESS MONUMENTS. IF IN DISAGREEMENT WITH PREVIOUSLY ESTABLISHED CORNER, SHOW THE DISTANCE BETWEEN THE TWO CORNERS AND ALSO INDICATE THE TIES TO THE DISPUTED CORNER.



(i) I, JAMES D. REIN, PROFESSIONAL LAND SURVEYOR NO. S-1234 HEREBY CERTIFY THAT THE CORNER LOCATION ON THIS RECORD WAS DETERMINED BY ME OR UNDER MY DIRECTION AND CONTROL AND THAT THIS U.S. PUBLIC LAND SURVEY MONUMENT RECORD IS CORRECT AND COMPLETE TO THE BEST OF MY KNOWLEDGE AND



SIGNATURE *[Handwritten Signature]* DATE 5-12-17

INDEX NO. T-5
3909302000