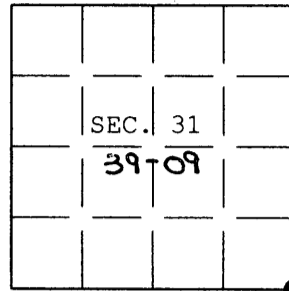


**U.S. PUBLIC LAND SURVEY MONUMENT RECORD**

Note: This form is intended and designed to fulfill all requirements of Wisconsin Administrative Code, Chapter A-E 7.08 U.S. Public Land Survey Monument Record (3) (a) (b) (c) (d) (e) (f) (g) (h) (i). An additional sheet may be added if necessary to conform with said requirements.

(a) CORNER LOCATION: Plane Coordinates  
 Cor. of Secs. 31, 32, 5 & 6 X:  
 Township 38 & 39 North Y:  
 Range 9 East of the 4th P.M. Datum:  
 Town of Sugar Camp County of Oneida



(b) HISTORY OF ORIGINAL CORNER ESTABLISHMENT

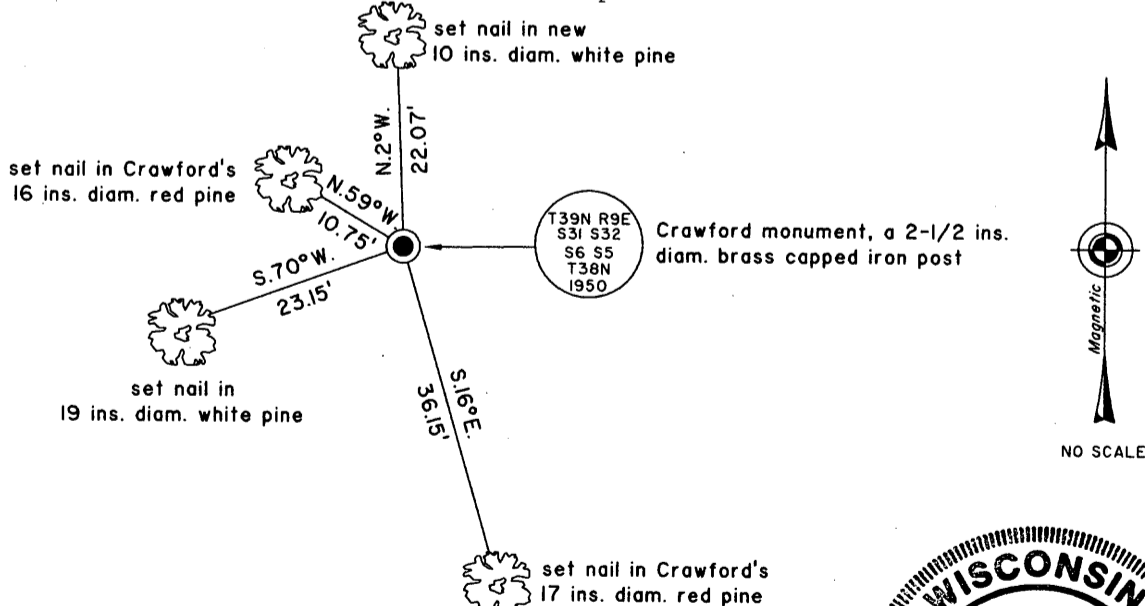
Original Surveyor: Fellows, Hiram C. Original Accessories:  
 Date of Survey: Commenced July 1859  
 Completed July 1859  
 birch 12" N.45°W., 46 lks.  
 maple 7" N.67°E., 27 lks.  
 hemlock 12" S.22°E., 24 lks.  
 maple 7" S.68°W., 11 lks.

(b) (f) (g) (h) Description of monument found at this corner and if it was accepted, state all evidence (material, testimonial, occupational, plats, records, other monuments) used as a basis for accepting. If not accepted or if nothing was found, state evidence used as basis for establishing location. If re-established through lost corner proportionate methods, indicate all monuments, distances and directions used to establish. Indicate type of monument and sign post found or set.

Aug.-Sept. 1950: Dependent Resurvey by Hugh B. Crawford of the Bureau of Land Management. Set a 2 ins. diam. iron post with brass cap from the remains of the original bearing trees. New trees: maple 7" N.52-1/2°E., 25 lks., norway pine 8" S.18-1/4°E., 55 lks., white pine 8" S.59-1/2°W., 47 lks. and a norway pine 9" N.59-3/4°W., 16-1/2 lks.

5 May 2004: I found and accepted Crawford's monument, a 2-1/2 ins. diam. iron post, projecting 8 ins. above the ground with BLM brass cap mkd. as shown below. Crawford's maple is standing dead. I found or established accessories as shown below and set a white plastic sign post bearing Northeast, 1 ft. dist.

(c) (d) (e) Plan view of corner with ties to at least 4 witness monuments. If in disagreement with previously established corner, show the distances between the two corners and also indicate the ties to the disputed.



(i) I, Jeffrey W. Austin, Registered Land Surveyor No. S-1885, hereby certify upon honor that the corner location on this record was determined by me or under my direction and control and that this U.S. Public Land Survey Monument Record is correct and complete to the best of my knowledge and belief.

Signature \_\_\_\_\_ Date 30 JAN 2005



INDEX NO. 2-5

39 09 31 00 00