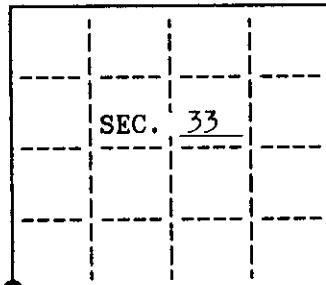


U.S. PUBLIC LAND SURVEY MONUMENT RECORD

Note: This form is intended and designed to fulfill all requirements of Wisconsin Administrative Code, Chapter A-8 7.08 U.S. Public Land Survey Monument Record (3)(a)(b)(c)(d)(e)(f)(g)(h)(i). An additional sheet may be added if necessary to conform with said requirements.

(a) CORNER LOCATION: State Plane Coordinates
 Southwest corner of Sec. 33 X Not available
 Township 39 North Y Not available
 Range 9 East Datum Base _____
 Town/City Sugar Camp County of Oneida



(b) HISTORY OF ORIGINAL CORNER ESTABLISHMENT

Original Surveyor: Hiram Fellows Original B.T.'S
 Date of Survey: Commenced July 1859 8" Fir N 74° W 21 lks.
 12" Birch N 66° E 21 lks.
 Completed July 1859 12" Birch S 58° E 16 lks.
 8" Birch S 69° W 20 lks.

(b)(f)(g)(h) Description of monument found at this corner and if it was accepted, state all evidence (material, testimonial, occupational, plats, records, other monuments) used as a basis for accepting. If not accepted or if nothing was found, state evidence used as basis for establishing location. If reestablished through lost corner proportionate methods, indicate all monuments, distances and directions used to establish. Indicate type of monument and sign post found or set.

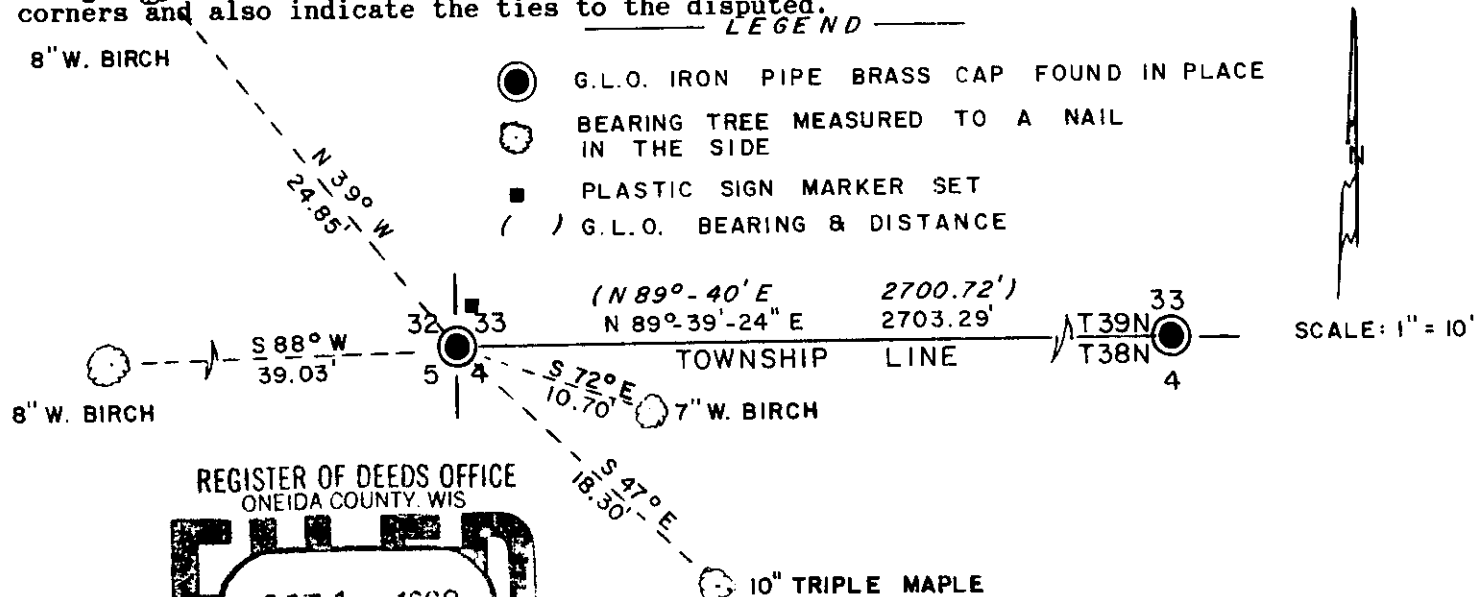
1950: Hugh Crawford, General Land Office set a 2" iron pipe brass cap marked and witnessed as described in the resurvey notes of Sec. 5, T 38 N, R 9 E.

June 18, 1990: Found G.L.O. iron pipe brass cap and the following bearing trees measured to a nail in the side: 7" W. Birch S 72° E 10.70'
 8" W. Birch N 39° W 24.85'

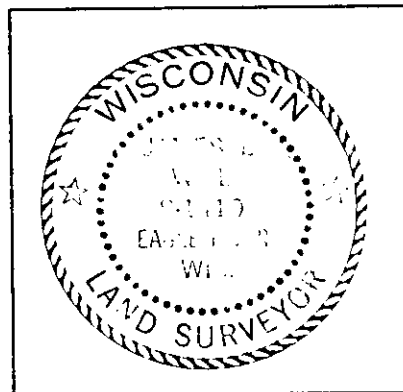
Made the following new bearing trees measured to a nail in the side:
 8" W. Birch S 88° W 39.03'
 10" Triple Maple S 47° E 18.30'

Set a white plastic sign marker 1 foot northeast of the corner.

(c)(d)(e) Plan view of corner with ties to at least 4 witness monuments. If in disagreement with previously established corner, show the distances between the two corners and also indicate the ties to the disputed.



REGISTER OF DEEDS OFFICE
 ONEIDA COUNTY, WIS
FILED
 OCT 1 1990
 At _____ O'Clock _____ M
THOMAS H. LEIGHTON
 REGISTER OF DEEDS



(i) I, James L. Will, R.L.S. #1410
 hereby certify that the corner location on this record was determined by me or under my direction and control and that this U.S. Public Land Survey Monument Record is correct and complete to the best of my knowledge and belief.

James L. Will Signature
 June 26, 1990 Date

INDEX NO. 2-9

3909320000