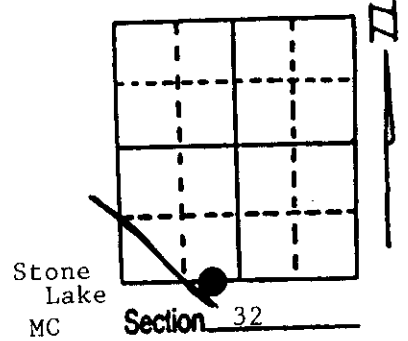


# U.S. PUBLIC LAND SURVEY MONUMENT RECORD

**Note:** This form is intended and designed to fulfill all requirements of Wisconsin Administrative Code, Chapter A-E 7.08 U.S. Public Land Survey Monument Record (3) (a) (b) (c) (d) (e) (f) (g) (h) (i). An additional sheet may be added if necessary to conform with said requirements.

(a) Corner location: Township 39 North Section 32  
 T 38 N Section 5  
 Range 9 East/West

Town/City/Village Sugar Camp  
 County Oneida



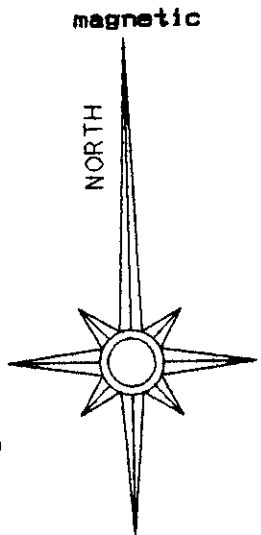
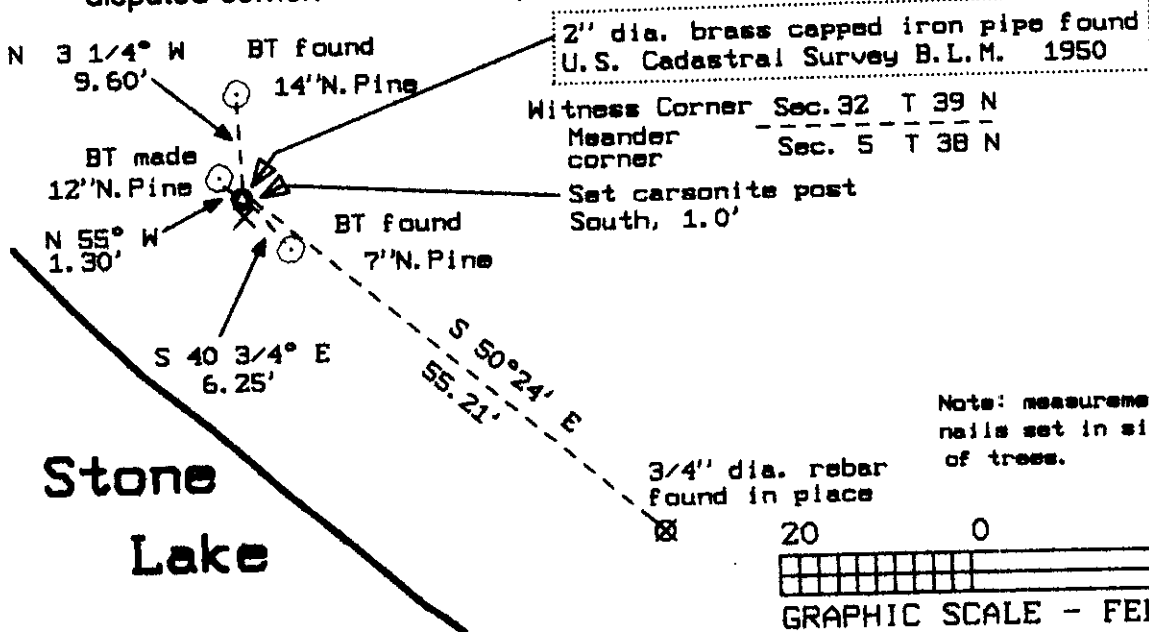
(b) (f) (g) (h) Description of monument found at this corner and if it was accepted, state all evidence (material, testimonial, occupational, plats, records, other monuments) used as a basis for accepting. If not accepted or if nothing was found, state evidence used as basis for establishing location. If reestablished through lost corner proportionate methods, indicate all monuments, distances and directions used to establish. Indicate type of monument found or set and sign post.

1859 H.C. Fellows set post BT'S: 15" Y. Pine S43°E 23 links  
 15" Y. Pine N18°E 28links

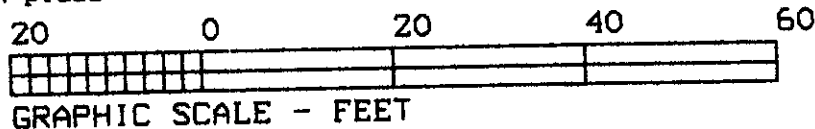
1950 BLM Dependent Resurvey by Hugh B. Crawford Cadastral Engineer  
 Crawford found original bearing trees. Location for MC was on the edge of lake.  
 He set 2"X30" brass capped iron pipe as a witness Meander Corner N89°17'W,  
 10.20 chains west of 1/4 corner.  
 BT'S made: 5" N.Pine S40 3/4°E, 10 links.  
 9" N.Pine N3 1/2°W, 14 links.

1993 Found Crawfords iron pipe and BT's. Made 1 new bearing tree and set carsonite post as shown on sketch below.

(c) (d) (e) Plan view of corner with ties to at least 4 witness monuments. If in disagreement with previously established corner, show the distances between the two corners and also indicate the ties to the disputed corner.



Note: measurements made to nails set in side of trees.



(i) I, Stephen J. Favorite RLS#1616  
 (type or print name) certify that the corner location on this record was determined by me or under my direction and control and that this U.S. Public Land Survey Monument Record is correct and complete to the best of my knowledge and belief.

Stephen J. Favorite 12-29-94  
 Signature Date



Index No. Z-67

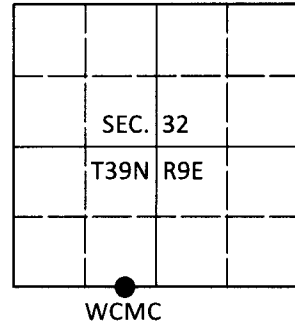
3909320024

# U.S. PUBLIC LAND SURVEY MONUMENT RECORD

Note: This form is intended and designed to fulfill all requirements of Wisconsin Administrative Code, Chapter A-E 7.08 U.S. Public Land Survey Monument Record (3)(a-i).

(a) CORNER LOCATION  
 Wit. Meander Cor. of Secs. 5 & 32  
 Township 38 & 39 North  
 Range 9 East of the 4th P.M.  
 Town of Sugar Camp  
 County of Oneida

WISCRS - Oneida County  
 N: 230,504.37 USft  
 E: 267,583.12 USft  
 Datum: NAD 83(2011)  
 GNSS Method: RTN - Offset  
 GNSS Control: WISCORS VRS



(b) HISTORY OF ORIGINAL CORNER ESTABLISHMENT

Original Surveyor: \_\_\_\_\_ Original Accessories: \_\_\_\_\_  
 Date of Survey Commenced: \_\_\_\_\_ See previous USPLS Monument Record  
 Completed: \_\_\_\_\_

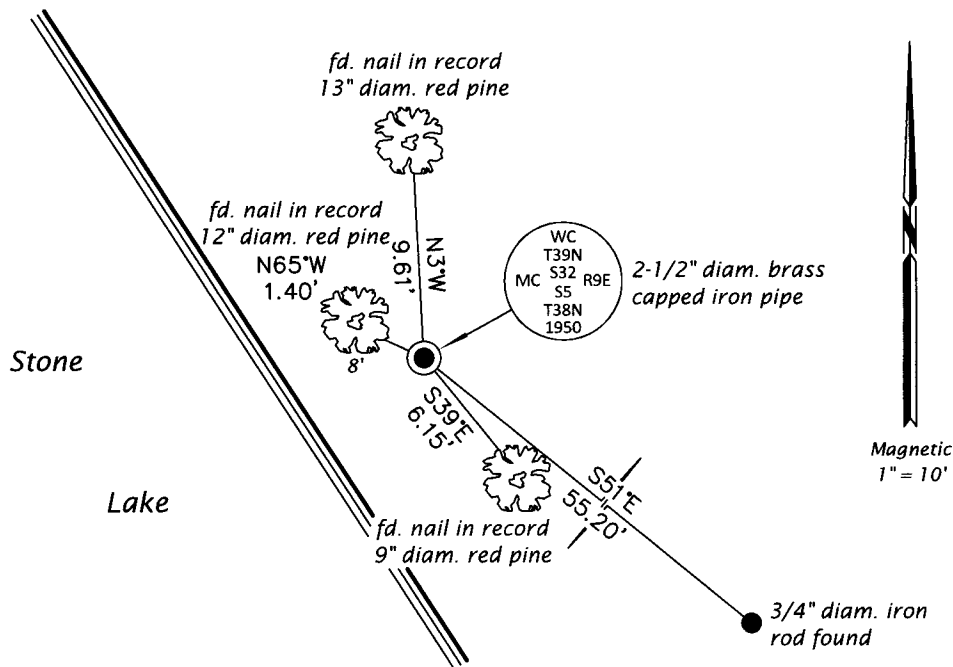
(b)(f)(g)(h) Description of monument found at this corner and if it was accepted, state all evidence (material, testimonial, occupational, plats, records, other monuments) used as a basis for accepting. If not accepted or if nothing was found, state evidence used as basis for establishing location. If re-established through lost corner proportionate methods, indicate all monuments, distances and directions used to establish. Indicate type of monument and sign post found or set.

*This is a perpetuation of a previous USPLS Monument Record by Stephen J. Favorite, RLS dated Dec. 29, 1994 and filed in the office of the Oneida County Register of Deeds. A complete history of the corner can be found on the previous monument record. I accept the previous location as a true and faithful perpetuation or reestablishment of the original corner location and further perpetuate it as follows.*

*Jan. 5, 2019: I found and accepted the record monument, a 2-1/2" diam. iron pipe with a 3-1/4" diam. BLM brass cap projecting 8" above the ground surface. I found or established accessories as shown below. I found a white vinyl sign post bearing South, 1.1 ft.*

*The coordinate value shown has been verified by at least one of the following methods: 1) comparison to a previously GPS determined published value; 2) the value is the average of two or more GPS observations at a markedly different time; 3) one or more distances were measured back to the GPS observed corner from temporary GPS observed offset locations.*

(c)(d)(e) Plan view of corner with ties to at least 4 witness monuments. If in disagreement with previously established corner, show the distances between the two corners and also indicate the ties to the disputed.



REGISTER OF DEEDS OFFICE  
 ONEIDA COUNTY  
 FILED

FEB 19 2019

KYLE J. FRANSON  
 REGISTER OF DEEDS

(i) I, Jeffrey W. Austin, Professional Land Surveyor No. S-1885, hereby certify that the corner location on this record was determined by me or under my direction and control and that this U.S. Public Land Survey Monument Record is correct and complete to the best of my knowledge and belief.

*[Handwritten Signature]*  
 \_\_\_\_\_  
 Signature

1 FEB 2019  
 \_\_\_\_\_  
 Date