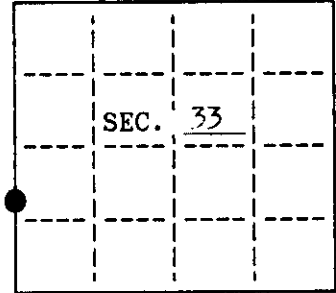


U.S. PUBLIC LAND SURVEY MONUMENT RECORD

Note: This form is intended and designed to fulfill all requirements of Wisconsin Administrative Code, Chapter A-E 7.08 U.S. Public Land Survey Monument Record (3)(a)(b)(c)(d)(e)(f)(g)(h)(i). An additional sheet may be added if necessary to conform with said requirements.

(a) CORNER LOCATION: State Plane Coordinates
 South
 M.C. corner of Sec. 32 & 33 X Not available
 Township 39 North Y Not available
 Range 9 East Datum Base _____
 Town/City Sugar Camp County of Oneida



(b) HISTORY OF ORIGINAL CORNER ESTABLISHMENT
 Original Surveyor: William E Daugherty Original B.T.'S
 Date of Survey: Commenced Sept. 22, 1863 10" Hemlock S 60° W 36 lks
 12" W. Pine S 56° E 31 lks
 Completed Sept. 29, 1863

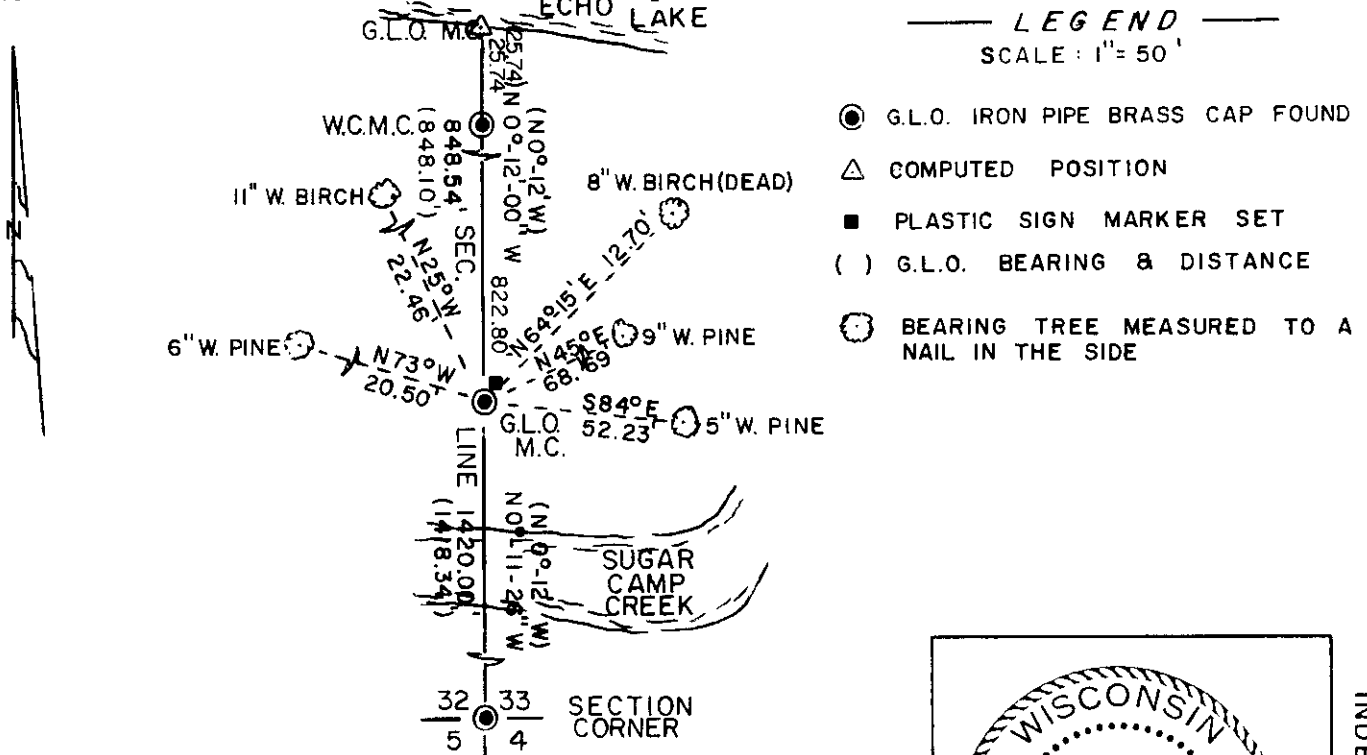
(b)(f)(g)(h) Description of monument found at this corner and if it was accepted, state all evidence (material, testimonial, occupational, plats, records, other monuments) used as a basis for accepting. If not accepted or if nothing was found, state evidence used as basis for establishing location. If reestablished through lost corner proportionate methods, indicate all monuments, distances and directions used to establish. Indicate type of monument and sign post found or set.

Oct. 1952: Hugh B. Crawford, G.L.O. surveyor found no original evidence. At Proportionate distance set an iron pipe brass capped monument for the meander corner.
 Made the following bearing trees: 8" Birch N64½°E 19½ lks (12.87')
 6" Birch N25°W 34½ lks (22.77')

May, 1990: I, James L. Will, found the G.L.O. iron pipe
 Found G.L.O. B.T.'s measured to a nail in the side:
 11" W. Birch N 25° W 22.46' 8" W. Birch(Dead) N 64½° E 12.70'
 Made the following new bearing trees measured to a nail in the side:
 6" W. Pine N 73° W 20.50'
 9" W. Pine N 45° E 68.69'
 5" W. Pine S 84° E 52.23'

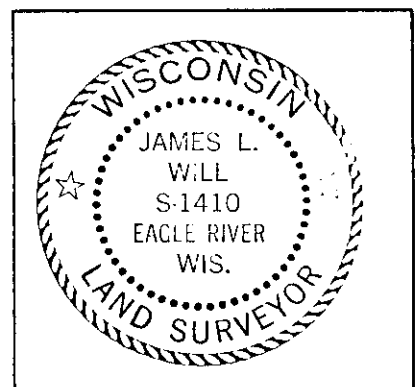
Set plastic sign marker northeast of the corner.

(c)(d)(e) Plan view of corner with ties to at least 4 witness monuments. If in disagreement with previously established corner, show the distances between the two corners and also indicate the ties to the disputed.



(i) I, James L. Will, R.L.S. #1410 hereby certify that the corner location on this record was determined by me or under my direction and control and that this U.S. Public Land Survey Monument Record is correct and complete to the best of my knowledge and belief.

Signature James L. Will Date 3/6/02



INDEX NO. X,Y-9

3909321300