

FEB 08 2023

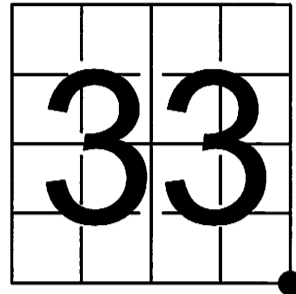
KYLE J. FRANSON
REGISTER OF DEEDS

U S PUBLIC LAND SURVEY MONUMENT RECORD - ADDENDUM

NOTE: This form is intended and designed to fulfill all requirements of Wisconsin Administrative Code, Chapter A-E 7.08 U.S. Public Land Survey Monument Record (3) (a-i)

A-E 7.08(3)(a) Identity of corner
SOUTHEAST CORNER OF SECTION 33
TOWNSHIP 39 NORTH
RANGE 09 EAST OF THE 4TH PM
TOWN OF SUGAR CAMP,
COUNTY OF ONEIDA

WISCORS - ONEIDA COUNTY
N: 230,575.742 USft (230,575.856)
E: 276,345.188 USft (276,345.247)
Datum: NAD83 (2011)
GNSS Method RTN - Direct
GNSS Control WISCORS VRS



The coordinate value shown has been verified by the average of two or more GPS observations at a markedly different time. Values shown in parenthesis, are previously published measurements.

A-E 7.08(3)(b) Description of any record evidence, monument evidence, occupational evidence, testimonial evidence, or any other material evidence.

Original Surveyor: Hiram C. Fellows
(Note: Previous U.S. Public Land Survey Monument Record refers to Daugherty as Original Surveyor)

Date of Original Survey	Commenced:	July, 1859	Original Accessories:			
	Completed:	No date	Tamarac	6	N 43° W	8
			Tamarac	10	N 54° E	28
			Spruce	8	S 48° E	12
			Spruce	10	S 55° W	29

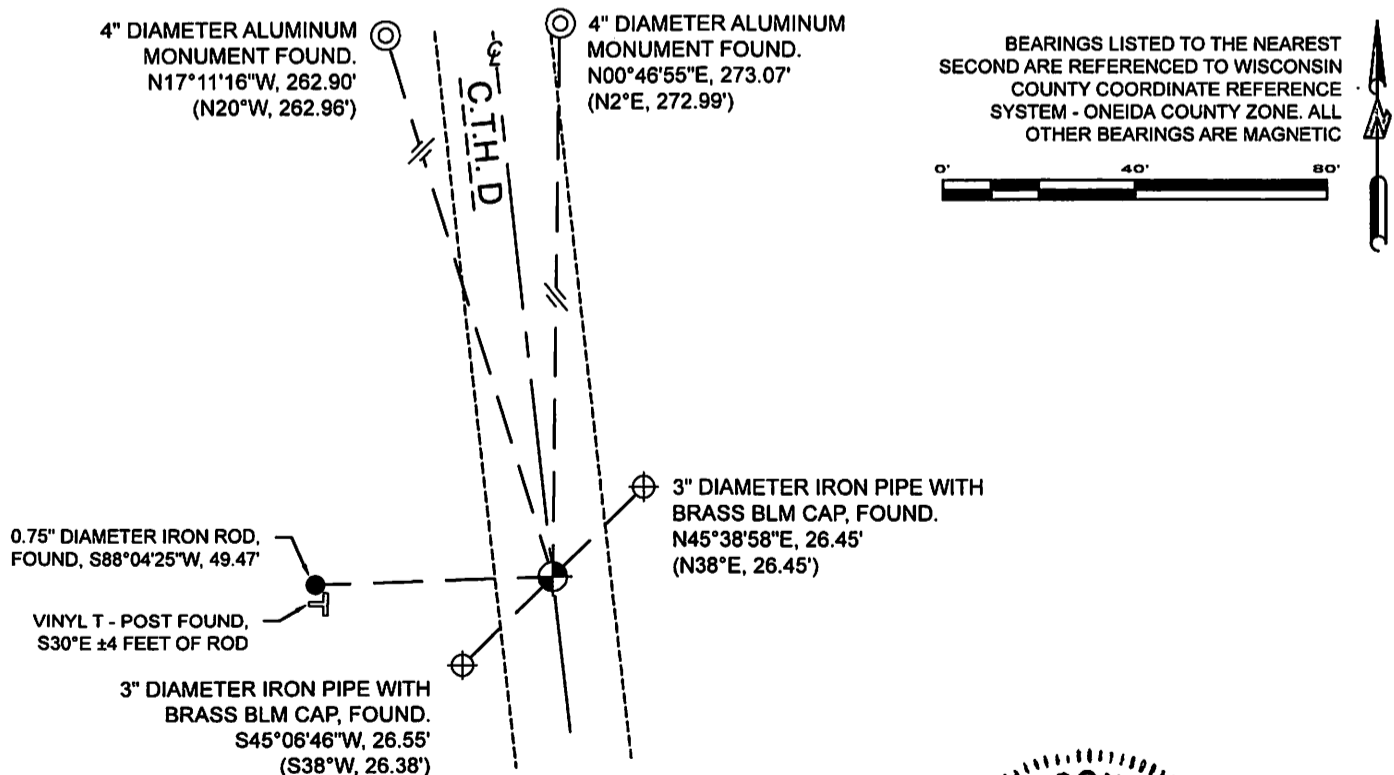
See Previous Monument Record: Index No. A-13 - June 24, 1998 - Surveyor S1182 - William E. Bandow - Thence:

- September 28, 1998 - Surveyor 1523 - Todd J. Loftus - refers to USPLS record sheets for this position on O.C.S. Map B4067.
- February 26, 2003 - Surveyor 1795 - Devon Vanden Heuvel - indicates this position as "existing railroad spike" on O.C.S. Map C1965.
- January 22, 2004 - Surveyor 1763 - Thomas A. Boettcher - indicates this position as "nail in pavement" on O.C.S. Map B5578.
- November 18, 2004 - Surveyor 1910 - Matthew E. Høglund - indicates this position as "found railroad spike" on O.C.S. Map C2112.
- December 06, 2007 - Surveyor 2070 - Michael E. Weber - indicates this position as "railroad spike found" on O.C.S. Map B6871.
- May 06, 2008 - Surveyor 1731 - Kip W. Soder - indicates this position as "railroad spike found" on O.C.S. Map B7005.
- March 03, 2011 - Surveyor 2070 - Michael E. Weber - indicates this position as "steel survey pin" on O.C.S. Map A2525.

June 01, 2022 - At the request of Oneida County Land Information, I found: the shaft of a steel nail (no head) on the centerline of County Trunk Highway D. I also found Crawfords 2 iron post reference monuments, and 2 of Laspa's reference monuments as noted by Bandow on U.S. Public Land Survey Monument Record A-13.

A-E 7.08(3)(f) I accept this monument as a FOUND PERPETUATED LOCATION OF THE CORNER and established 1 new witness as shown below.

A-E 7.08(3)(c)(d)(e)(h) Plan view of corner with references to at least 4 witness monuments. If in disagreement with previously established corner, show the distances between the two corners and also indicate the ties to the disputed. The directions and distances to other public land survey corners used as evidence or used for determining the corner location.

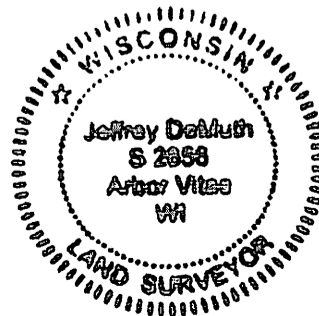


A-E 7.08(3)(i) I, Jeffrey L. DeMuth, Professional Land Surveyor No. S-2656, hereby certify that the corner location on this record was determined by me or under my direction and control and that this U.S. Public Land Survey Monument Record is correct and complete to the best of my knowledge, and belief

Jeffrey L. DeMuth

January 17, 2023
DATE

SIGNATURE



2-13
43909330000