

# U.S. PUBLIC LAND SURVEY MONUMENT RECORD

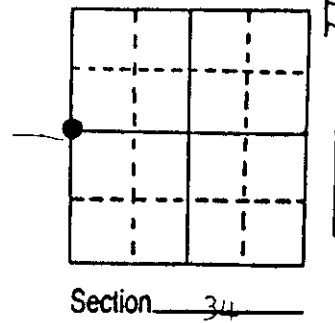
Note: This form is intended and designed to fulfill all requirements of Wisconsin Administrative Code, Chapter A-E 7.08 U.S. Public Land Survey Monument Record (3) (a) (b) (c) (d) (e) (f) (g) (h) (i). An additional sheet may be added if necessary to conform with said requirements.

(a) Corner location: Township 39 North

Range 9 East/West

Town/City/Village Sugar Camp

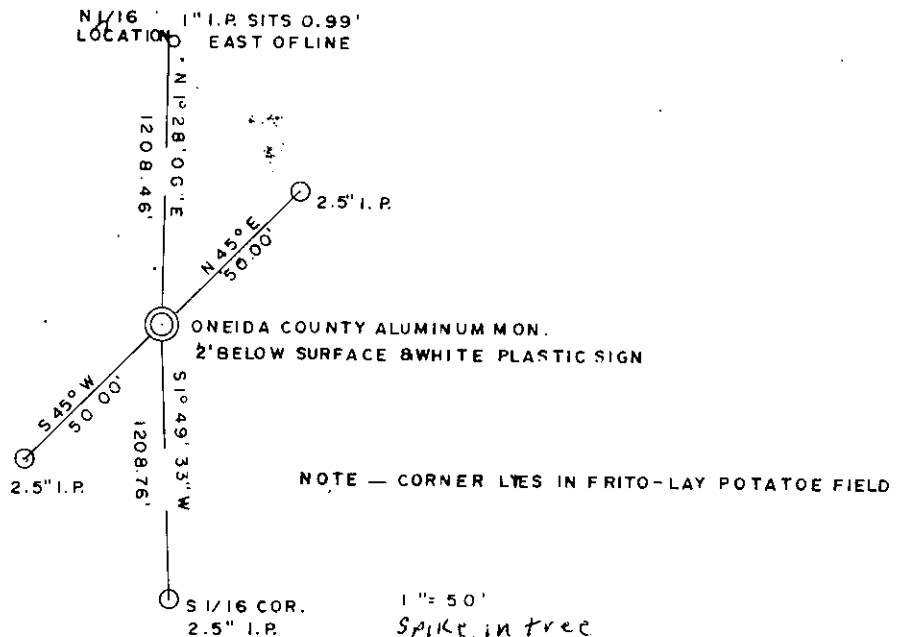
County Oneida



(b) (f) (g) (h) Description of monument found at this corner and if it was accepted, state all evidence (material, testimonial, occupational, plats, records, other monuments) used as a basis for accepting. If not accepted or if nothing was found, state evidence used as basis for establishing location. If reestablished through lost corner proportionate methods, indicate all monuments, distances and directions used to establish. Indicate type of monument found or set and sign post.

W.L. corner original set by W.F. Daugherty June 1863  
 R.T. Corn set near Rte. 166  
 Mem. 40 331 1/2, 41, 51ks.  
 M. 7 11 1/2 23, 51ks.  
 D.H. Vaughn 1886 found R.T. con. 41 R.T. Set New R.T.  
 R.P. stn. 30 372 1/2 121ks  
 G.O. found fence corner 1852 set Brass capped Mon.  
 He found no evidence of anything because of potatoe field  
 reset corner by doubling M/16 distance and bearing checked  
 good to section corner to the North. Set Oneida County Aluminum  
 Mon. & white plastic stake

(c) (d) (e) Plan view of corner with ties to at least 4 witness monuments. If in disagreement with previously established corner, show the distances between the two corners and also indicate the ties to the disputed corner.



(i) I, Todd Loftus  
 (type or print name) certify that the corner location on this record was determined by me or under my direction and control and that this U.S. Public Land Survey Monument Record is correct and complete to the best of my knowledge and belief.

Todd Loftus 1/13/87  
 Signature Date



Index No. X-13

3909332000