

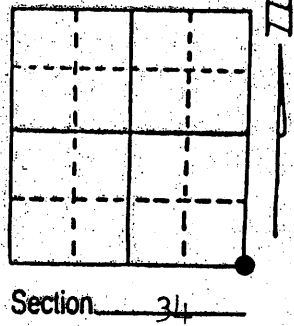
U.S. PUBLIC LAND SURVEY MONUMENT RECORD

Note: This form is intended and designed to fulfill all requirements of Wisconsin Administrative Code, Chapter A-E 7.08 U.S. Public Land Survey Monument Record (3) (a) (b) (c) (d) (e) (f) (g) (h) (i). An additional sheet may be added if necessary to conform with said requirements.

(a) Corner location: Township 39 North
 Range 9 East/West

Town/City/Village Sugar Camp

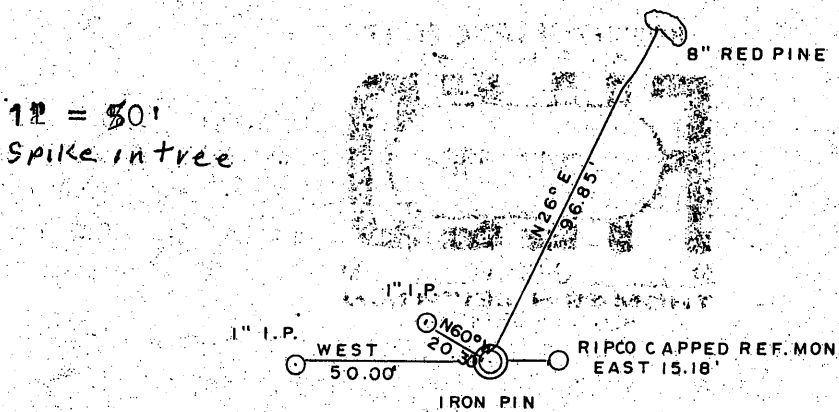
County Oneida



(b) (f) (g) (h) Description of monument found at this corner and if it was accepted, state all evidence (material, testimonial, occupational, plats, records, other monuments) used as a basis for accepting. If not accepted or if nothing was found, state evidence used as basis for establishing location. If reestablished through lost corner proportionate methods, indicate all monuments, distances and directions used to establish. Indicate type of monument found or set and sign post.

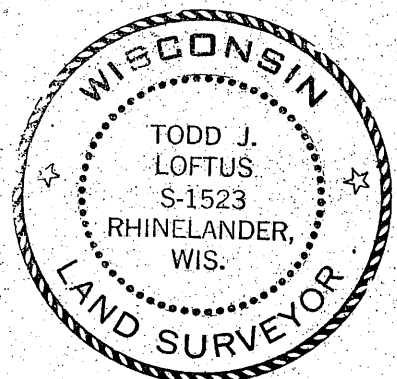
Original set by H.C. Fellows 1859 Bts. Ta. 6 N43 W 8
 Vaughan found original Bts. 1914 Ta. 10 N 54 E 28
 Ripco found pin in road 1960 Spruce 8 S 48 E 12
 We found ripco Bts. and pin in road set Spruce 10 S 55W 29
 Ref. Mon. and white plastic post

(c) (d) (e) Plan view of corner with ties to at least 4 witness monuments. If in disagreement with previously established corner, show the distances between the two corners and also indicate the ties to the disputed corner.



(i) I, Todd Loftus
 (type or print name) certify that the corner location on this record was determined by me or under my direction and control and that this U.S. Public Land Survey Monument Record is correct and complete to the best of my knowledge and belief.

Todd Loftus Signature
1/5/89 Date



Index No. 2-17

2909340000

U.S. PUBLIC LAND SURVEY MONUMENT RECORD

Note: This form is intended and designed to fulfill all requirements of Wisconsin Administrative Code, Chapter A-E 7.08 U.S. Public Land Survey Monument Record (3)(a)(b)(c)(d)(e)(f)(g)(h)(i). An additional sheet may be added if necessary to conform with said requirements.

(a) Corner location: Township 39 North
Range 09 East/West

REGISTER OF DEEDS OFFICE
ONEIDA COUNTY

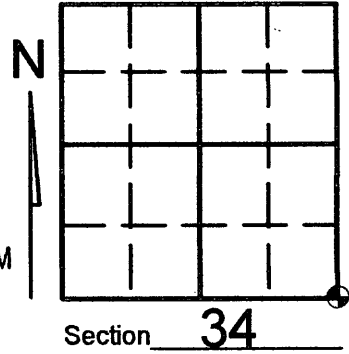
FILED

Town/City/Village SUGAR CAMP

MAY 04 2012

County ONEIDA

AT _____ O'CLOCK _____ M
THOMAS H. LEIGHTON
REGISTER OF DEEDS

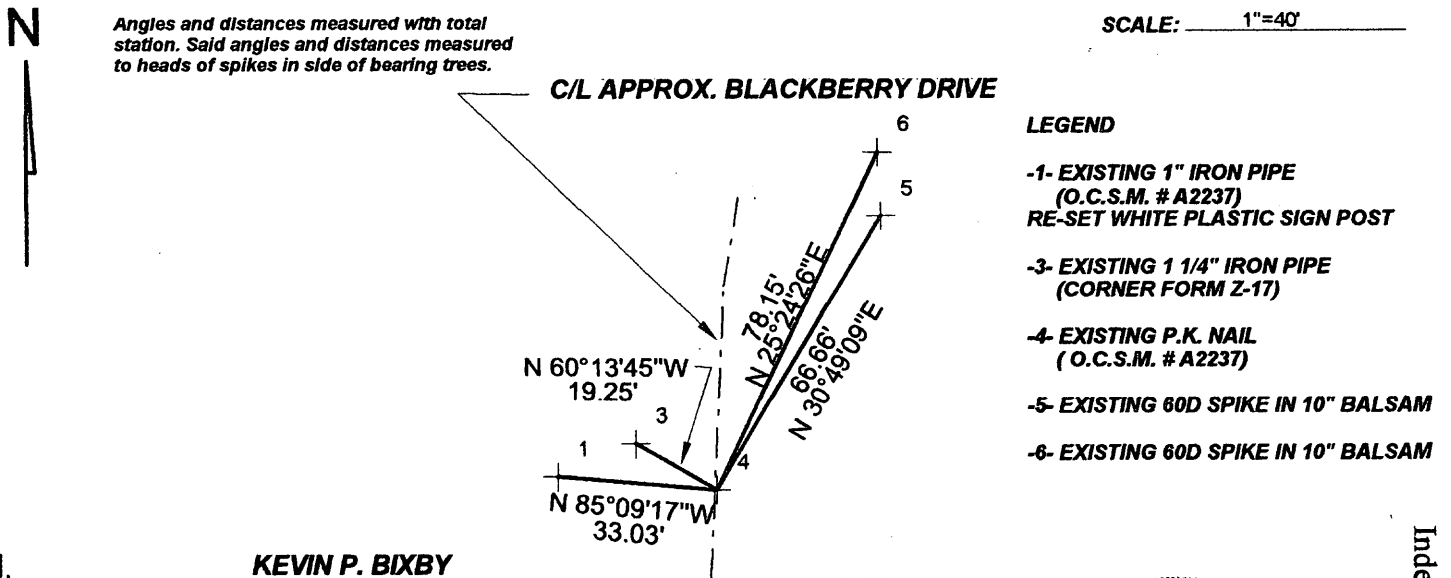


(b) (f) (g) (h) Description of monument found at this corner and if it was accepted, state all evidence (material, testimonial, occupational, plats, records, other monuments) used as a basis for accepting. If not accepted or if nothing was found, state evidence used as basis for establishing location. If reestablished through lost corner proportionate methods, indicate all monuments, distances and directions used to establish. Indicate type of monument found or set and sign post.

PRE-CONSTRUCTION: 06/03/09 Kevin Bixby Found P.K. Nail per Oneida County plat of survey number A2237

POST CONSTRUCTION: 04/27/12 Kevin Bixby found P.K. nail and witnesses as noted on pre-construction form L2609. Relocated white plastic sign post as shown below.

(c) (d) (e) Plan view of corner with ties to at least 4 witness monuments. If in disagreement with previously established corner, show the distances between the two corners and also indicate the ties to the disputed corner.



(i) I, KEVIN P. BIXBY
(type or print name) certify that the corner location on this record was determined by me or under my direction and control and that this U.S. Public Land Survey Monument Record is correct and complete to the best of my knowledge and belief.



Kevin P. Bixby Signature 4/30/12 Date

Stamp

3909340000

Index No. Z-17