

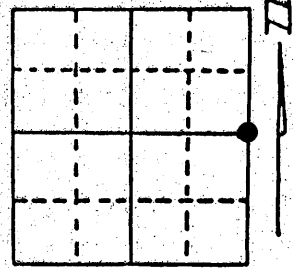
# U.S. PUBLIC LAND SURVEY MONUMENT RECORD

Note: This form is intended and designed to fulfill all requirements of Wisconsin Administrative Code, Chapter A-E 7.08 U.S. Public Land Survey Monument Record (3) (a) (b) (c) (d) (e) (f) (g) (h) (i). An additional sheet may be added if necessary to conform with said requirements.

(a) Corner location: Township 39 North  
 Range 9 East/West

Town/City/Village Sugar Camp

County Oneida



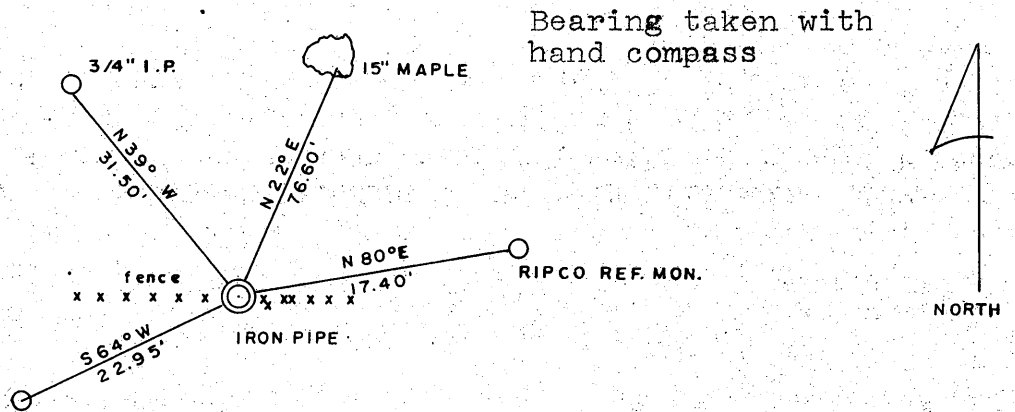
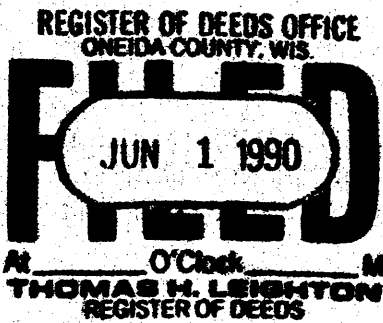
Section 34

(b) (f) (g) (h) Description of monument found at this corner and if it was accepted, state all evidence (material, testimonial, occupational, plats, records, other monuments) used as a basis for accepting. If not accepted or if nothing was found, state evidence used as basis for establishing location. If reestablished through lost corner proportionate methods, indicate all monuments, distances and directions used to establish. Indicate type of monument found or set and sign post.

Original corner set by W.E. Daugherty June 1863  
 Vaughan reset corner June 1914 when laying out road  
 Ripco Surveyors set corner by doubling over from 1/16 corner from the South, 1960  
 We found Ripcos Bts and iron pipe in road.

NOTE- original Bts. Hemlock 7", N 53° W, 8 lks.  
 Red Oak 18" S 12° E, 36 lks.

(c) (d) (e) Plan view of corner with ties to at least 4 witness monuments. If in disagreement with previously established corner, show the distances between the two corners and also indicate the ties to the disputed corner.



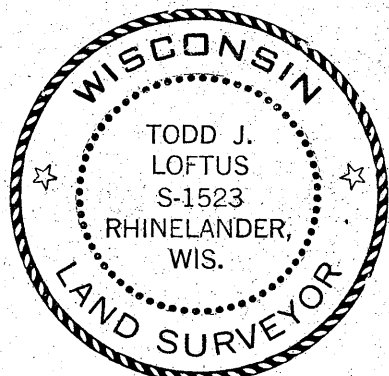
STAMPED ALUMINUM MON.  
 CASTONITE ROD

distance taken to nail in base of tree

no scale

(i) I, Todd J. Loftus  
 (type or print name) certify that the corner location on this record was determined by me or under my direction and control and that this U.S. Public Land Survey Monument Record is correct and complete to the best of my knowledge and belief.

Todd Loftus Signature 5/15/90 Date



Index No. X - 17

3909342000

# U.S. PUBLIC LAND SURVEY MONUMENT RECORD

Note: This form is intended and designed to fulfill all requirements of Wisconsin Administrative Code, Chapter A-E 7.08 U.S. Public Land Survey Monument Record (3)(a)(b)(c)(d)(e)(f)(g)(h)(i). An additional sheet may be added if necessary to conform with said requirements.

(a) Corner location: Township 39 North  
 Range 09 East/West

REGISTER OF DEEDS OFFICE  
 ONEIDA COUNTY

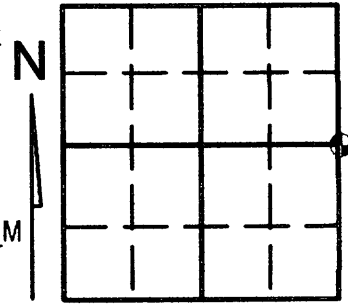
**FILED**

MAY 04 2012

Town/City/Village SUGAR CAMP

County ONEIDA

AT \_\_\_\_\_ O'CLOCK \_\_\_\_\_ M  
**THOMAS H. LEIGHTON**  
 REGISTER OF DEEDS



Section 34

(b) (f) (g) (h) Description of monument found at this corner and if it was accepted, state all evidence (material, testimonial, occupational, plats, records, other monuments) used as a basis for accepting. If not accepted or if nothing was found, state evidence used as basis for establishing location. If reestablished through lost corner proportionate methods, indicate all monuments, distances and directions used to establish. Indicate type of monument found or set and sign post.

PRE CONSTRUCTION: 06/03/09 Kevin Bixby found 1" iron pipe as noted on corner form x-17 and a 1 1/4" iron pipe of unknown origin.

PRE CONSTRUCTION : 06/11/09 Per corner form L2659, Jeffrey Demuth found the 1" iron pipe noted as number 14 and the 1 1/4" iron pipe noted as number 12 from Bixby's pre construction work and verified that the 1" iron pipe matched coordinates as published by Oneida County

POST CONSTRUCTION: 04/27/12 Kevin Bixby found the 1 1/4" iron pipe and/or number 12 as noted on corner form L2659 and set a railroad spike in place of the destroyed 1" iron pipe and/or #14 from those witnesses as noted on corner form L2659 and witnessed as shown below.

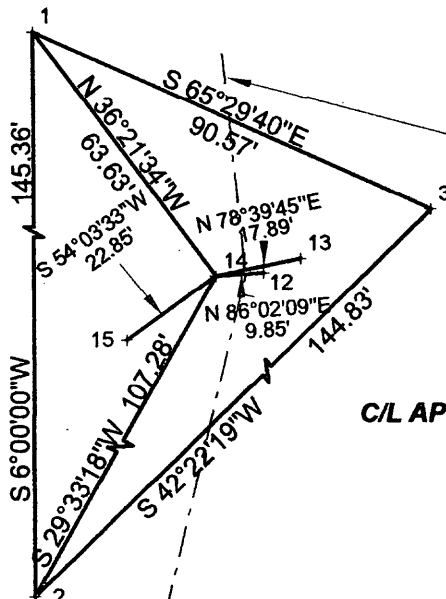
(c) (d) (e) Plan view of corner with ties to at least 4 witness monuments. If in disagreement with previously established corner, show the distances between the two corners and also indicate the ties to the disputed corner.

Angles and distances measured with total station.



LEGEND

- 1,2,3 EXISTING 7/8" REBAR PER FORM L2659
- 15 EXISTING ONEIDA COUNTY W.M.
- 14 SET RAILROAD SPIKE
- 12 EXISTING 1 1/4" IRON PIPE
- 13 EXISTING 2" IRON PIPE RIPCO W.M.



SCALE: 1"=40'

C/L APPROX. BLACKBERRY DRIVE

(i) I, KEVIN P. BIXBY

(type or print name) certify that the corner location on this record was determined by me or under my direction and control and that this U.S. Public Land Survey Monument Record is correct and complete to the best of my knowledge and belief.



Kevin P. Bixby  
 Signature

4/30/12  
 Date

Stamp

3909342000

Index No. X-17