

U.S. PUBLIC LAND SURVEY MONUMENT LOCATION RECORD

Recorders Data

CORNER: NW Section Corner SECTION: 1 TOWNSHIP 38 NORTH RANGE 9 EAST/WEST

FOR M.C. CORNER INDICATE: NAME OF WATERWAY N/A SECTION LINE N/A

(CITY)(VILLAGE)(TOWN) OF: Sugar Camp COUNTY OF: Oneida

Description of monument found or placed and all other evidence used as a basis for monument location; including all monuments and related measurements required if the corner location is reestablished by lost corner proportionate methods. Also indicate name of original surveyor, survey date, corner monument set and established bearing trees, witness or reference monuments with ties from available records.

Found and accepted a standard 2" dia. aluminum pipe monument with stamped aluminum Oneida County cap nearly flush with existing grade at this corner location in bottom center of a graded north/south drainageway along the West side of State Trunk Highway 17. In July 1859 Fellows/GLO set a wood post as the corner and marked original BTs: 14" Sugar N47°W 42 lks, 8" Birch N35°E 8 lks, 25" Hemlock S49°E 14 lks and a 12" Linden S64°W 32 lks, all of which are now obliterated.

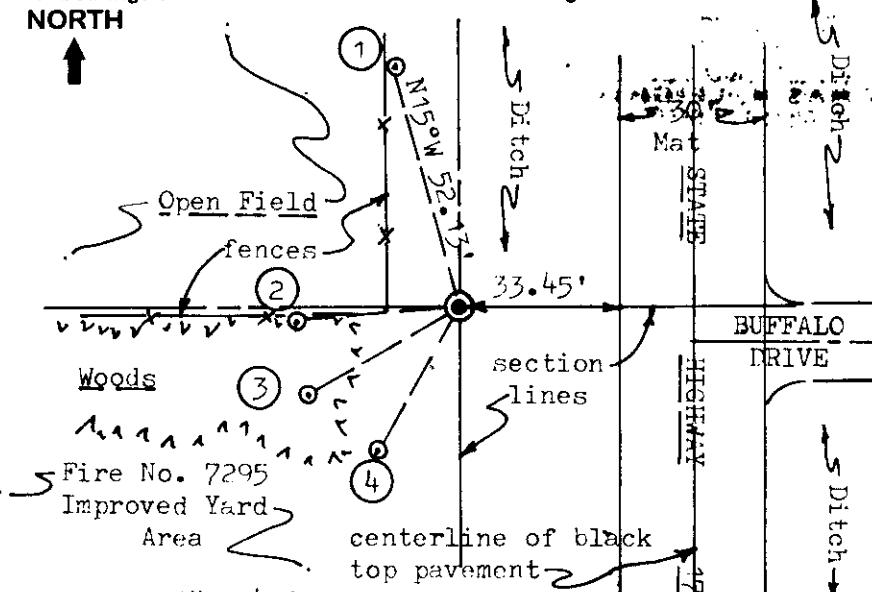
Subsequent to the original GLO survey, this corner location has been reestablished and/or perpetuated by the following plats of survey filed in Oneida County survey records: B-2489 by T. Loftus dated June 1992; B-2491 by T. Loftus in July 1992 and C-1262 by W. Bandow in July 1996.

This recovery was witnessed by adjoining landowner of parcel SW of corner, Lyle Peterson, who advised me that this corner has been monumented and used by surveyors as located for many years.

Therefore, this corner location is further perpetuated by common report upon the basis of the foregoing evidence.

Plan view map of monument location with bearing and distance ties to a minimum of four(4) described witness or reference monuments of concrete, natural stone, iron, live bearing trees or equivalent material. If applicable, also show a minimum of two(2) bearing and distance ties to any other monument found and not accepted; including the bearing and distance from the accepted monument. Indicate the basis for bearings of reference ties if not referenced to magnetic north.

NORTH



WITNESS MONUMENT TIES:

- ① 1" dia. by 24" long iron pipe set 0.75' East of fence post with a standard yellow poly Reference Mark cap in top flush to grade.
- ② New BT 14" Mr S85°W 34.10' to PK & washer in left face.
- ③ Old BT twin 11" Mr S60°W 36.37' to 60d spike in right face.
- ④ New reference, old 1 1/2" dia. iron lot corner pipe S30°W 34.40'.

Note: Standard white poly corner 'T' marker post found 6" West of corner monument; and I placed several smaller rocks around monument base as a cairn.

SCALE: 1" = 40'

Unless otherwise indicated, all bearing tree ties are to a .25" dia. by 2.5" long PK nail with a 1.25" dia. steel washer driven into unblazed right face and a .25" dia. by 2.5" long PK nail with a 2" dia. steel washer stamped 'BT' is also driven into unblazed face of bearing tree at DBH; the basis for measured bearings is magnetic to nearest degree and all tie distances are horizontal measure to nearest 1/100th feet.

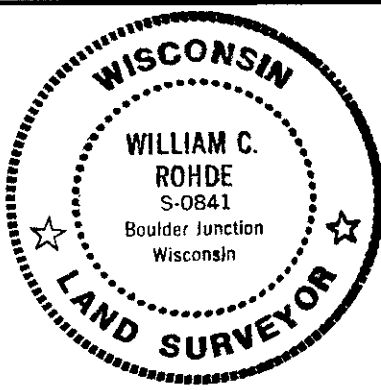
LAND SURVEYOR CERTIFICATION:

I, William C. Rohde, hereby certify that I am a duly licensed Professional Land Surveyor in Wisconsin, that this USPLS monument location was determined by me or under my direction and control, and that this U.S. Public Land Survey Monument Location Record is true and correct to the best of my knowledge and belief.

William C. Rohde Date: 4-26-98
Signature

	1		

INDEX NO.



RLS SEAL

SHEET NO. 1 OF 1

This form is intended to fulfill requirements of Chapter A-E 7.08 (3)(a)(b)(c)(d)(e)(f)(g)(h)(i) U.S. Public Land Survey Monument Location Record, Wisconsin Administrative Code. Use reverse side for geodetic location data and/or continuation purposes.

SECTION LOCATION MAP

INDEX NO. A 21
3909350000