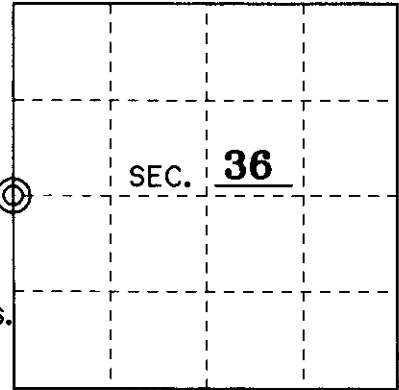


U.S. PUBLIC LAND SURVEY MONUMENT RECORD

Note: This form is intended and designed to fulfill all requirements of Wisconsin Administrative Code, Chapter A-E 7.08 U.S. Public Land Monument Record (3)(a)(b)(c)(d)(e)(f)(g)(h)(i). An additional sheet may be added if necessary to conform with said requirements.

(a) CORNER LOCATION: WEST County or State Plane Coordinates
1/4 Corner of Section 36 Northing _____
 Township 39 North Easting _____
 Range 9 East Datum Base _____
 Township/City Sugar Camp County of ONEIDA

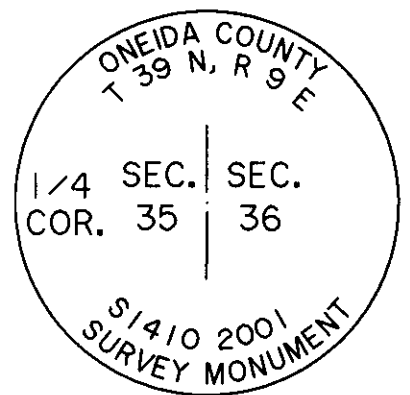
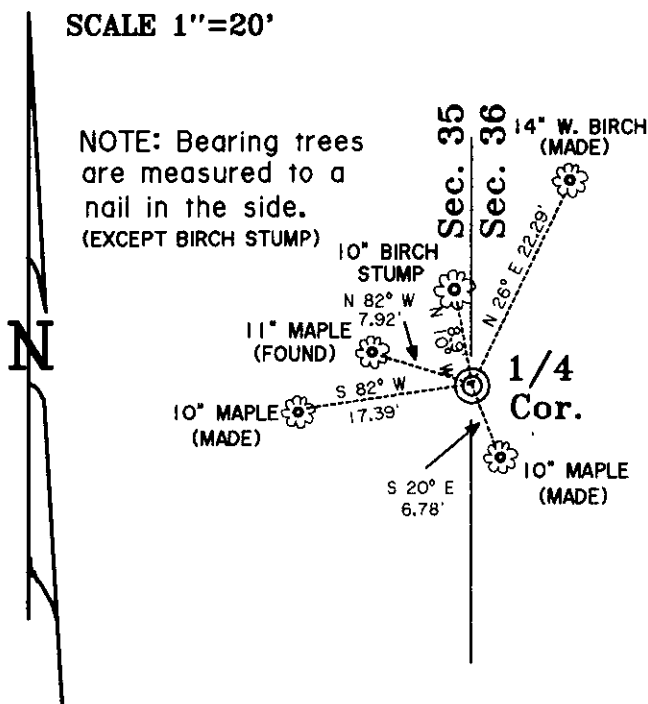


(b) HISTORY OF ORIGINAL CORNER ESTABLISHMENT Original B.T.'s
 Original Surveyor: William E. Daugherty 8" HEMLOCK S 77° E 12 LKS.
 Date of Survey: September 1863 8" BIRCH N 40° W 20 LKS.

(b)(f)(g)(h) Description of monument found at this corner and if it was accepted, state all evidence (material, testimonial, occupational, plats, records, other monuments) used as a basis for accepting. If not accepted or if nothing was found, state evidence used as basis for establishing location. If reestablished through lost corner proportionate methods, indicate all monuments, distances and directions used to establish. Indicate type of monument and sign post found or set.

- 1-24-1961 RIPCO DOES SURVEY IN SECTION 35 AND SHOWS CORNER IN WITH NO B.T.'S SHOWN. COUNTY FILE #A424.
- 8-25-1982 LOFTUS SURVEY, FILE HB106, SHOWS WELL POINT USED FOR 1/4 CORNER WITH NO B.T.'S SHOWN.
- 12-08-1977 ROBERT WINAT'S SURVEY, FILE HA125, SHOWS WELL POINT USED AS 1/4 CORNER WITH THE FOLLOWING B.T.'S: 10" W. BIRCH N 10° W 8.90 FEET AND A 10" MAPLE N 74° W 7.53 FEET.
- 12-18-2001 I, JAMES L. WILL, FIND WELL POINT USED IN PREVIOUS SURVEYS AND REPLACE D WITH AN ONEIDA COUNTY ALUMINUM MONUMENT AND SIGN POST 1 FOOT NORTHEAST OF CORNER. FOUND WINAT'S MAPLE B.T. OK AND BIRCH B.T. STUMP. CORNER IS AT FENCE CORNER.

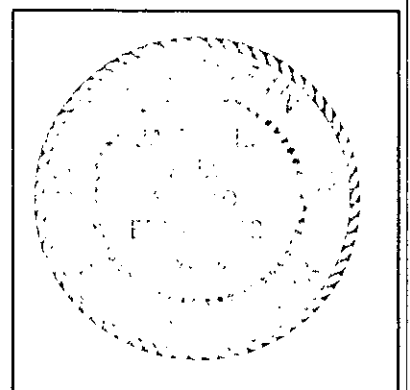
(c)(d)(e) Plan view of the corner with ties to at least 4 witness monuments. If in disagreement with previously established corner, show the distances between the two corners and also indicate the ties to the disputed.



(i) I, JAMES L. WILL R.L.S. No. 1410
 hereby certify that the corner location on this record was determined by me or under my direction and control and that this U.S. Public Land Survey Monument Record is correct and complete to the best of my knowledge and belief.

Signature *JL Will*

Date 12/13/2001



390935 20 00

Index No. X-21