

U.S. PUBLIC LAND SURVEY MONUMENT LOCATION RECORD

Recorders Data

CORNER: North 1/4 Corner SECTION: 1 TOWNSHIP 38 NORTH RANGE 9 EAST/WEST

FOR M.C. CORNER INDICATE: NAME OF WATERWAY N/A SECTION LINE N/A

(CITY)(VILLAGE)(TOWN) OF: Sugar Camp COUNTY OF: Oneida

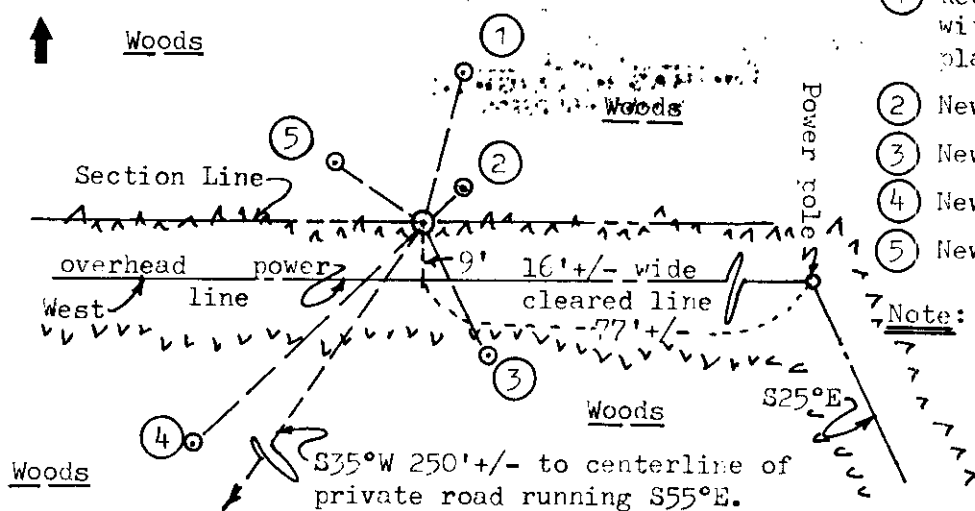
Description of monument found or placed and all other evidence used as a basis for monument location; including all monuments and related measurements required if the corner location is reestablished by lost corner proportionate methods. Also indicate name of original surveyor, survey date, corner monument set and established bearing trees, witness or reference monuments with ties from available records.

Found and accepted an old 1 1/2" dia. by 4 1/2' long iron pipe at corner location with uncapped top 3' above existing grade; I re-plumbed the old iron pipe and drove a standard 2" dia. by 30" long aluminum pipe monument over it with stamped aluminum Oneida County cap 6" above bog marsh surface. In July 1859, Fellows/GLO established the corner with a wood post and marked BT's: 10" Tam N18°E 18 lks and a 10" Spruce S15°E 38 lks, which are all now obliterated. Although the iron pipe is denoted as 1 1/2" or 2" dia. herein, this is common as measurement by surveyors may be either inside diameter, outside diameter, or ASTM dia. In 1981, Kasson also found and accepted a 2" dia. iron pipe at this corner and noted a 4" Tam BT N11°E 24.45' per his Plat of Survey filed as No. B-3131 in Oneida County survey records. In 1992, T. Loftus noted this corner location as a monumented corner per his Plats of Survey filed as No. B-2489 and B-2491 in Oneida County survey records. In 1996, W. Badow noted he found and accepted a 1 1/2" dia. iron pipe at this corner location per map legend on his Plat of Survey filed as No. C-1262 in Oneida County survey records. No other corner evidence was revealed by inspection nearby, therefore the corner location was accepted for public record by common report. This recovery was completed on April 21, 1998; there were no witnesses.

Plan view map of monument location with bearing and distance ties to a minimum of four (4) described witness or reference monuments of concrete, natural stone, iron, live bearing trees or equivalent material. If applicable, also show a minimum of two (2) bearing and distance ties to any other monument found and not accepted; including the bearing and distance from the accepted monument. Indicate plan view scale, North arrow and the basis for bearings if not referenced to magnetic north.

NORTH

Scale: 1" = 30'

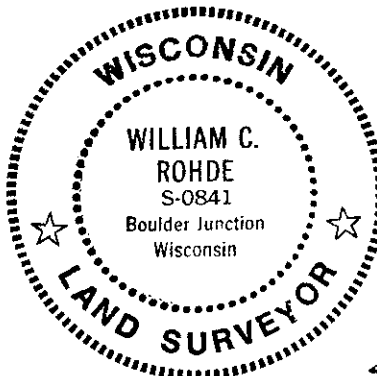


WITNESS MONUMENT TIES:

- ① Record BT 8" Tam. N14°E 24.45' with lower blaze open/scribing plain.
- ② New BT 10" Tam N51°E 8.57'.
- ③ New BT 10" Tam S26°E 22.93'.
- ④ New BT 10" Tam S46°W 50.13'.
- ⑤ New BT 6" Sb N56°W 16.75'.

Note: Standard white poly 'T' post set 1' North of corner. The entire corner location area is boggy wetland.

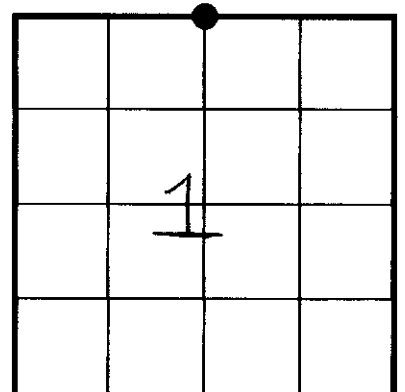
Unless otherwise indicated, all bearing tree ties are to a .25" dia. by 2.5" long PK nail with a 1.25" dia. steel washer driven into unblazed right face and a .25" dia. by 2.5" long PK nail with a 2" dia. steel washer stamped 'BT' is also driven into unblazed face of bearing tree at DBH; the basis for measured bearings is magnetic to nearest degree and all tie distances are horizontal measure to nearest 1/100th feet.



CERTIFICATION:

I, William C. Rohde, hereby certify that I am a duly licensed Professional Land Surveyor in Wisconsin, that this USPLS monument location was determined by me or under my direction and control, and that this U.S. Public Land Survey Monument Location Record is true and correct to the best of my knowledge and belief.

William C. Rohde Date: 4/22/98
Signature



RLS SEAL

SHEET NO. 1 OF 1

This form is intended to fulfill requirements of Chapter A-E 7.08 (3)(a)(b)(c)(d)(e)(f)(g)(h)(i) U.S. Public Land Survey Monument Location Record, Wisconsin Administrative Code. Use reverse side for geodetic location data and/or continuation purposes.

SECTION LOCATION MAP

INDEX NO. A - 23
3909360020

A 23