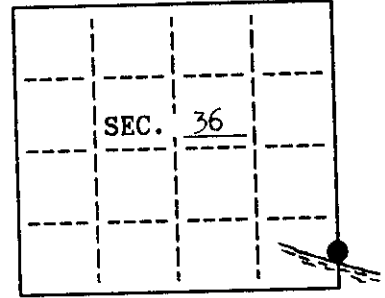


U. S. PUBLIC LAND SURVEY MONUMENT RECORD

Note: This form is intended and designed to fulfill all requirements of Wisconsin Administrative Code, Chapter A-8 7.08 U.S. Public Land Survey Monument Record (3)(a)(b)(c)(d)(e)(f)(g)(h)(i). An additional sheet may be added if necessary to conform with said requirements.

(a) CORNER LOCATION: State Plane Coordinates
 North M.C.-corner of Sec. 36 X Not available
 Township 39 North Y Not available
 Range 9 East Datum Base _____
 Town/City Sugar Camp County of Oneida



(b) HISTORY OF ORIGINAL CORNER ESTABLISHMENT
 Original Surveyor: Hiram Fellows
 Date of Survey: Commenced July 1859
 Completed July 1859

Original B.T.'S
 16" Y. Pine N 78° E 27 lks.
 16" Y. Pine N 42° W 30 lks.

(b)(f)(g)(h) Description of monument found at this corner and if it was accepted, state all evidence (material, testimonial, occupational, plats, records, other monuments) used as a basis for accepting. If not accepted or if nothing was found, state evidence used as basis for establishing location. If reestablished through lost corner proportionate methods, indicate all monuments, distances and directions used to establish. Indicate type of monument and sign post found or set.

July 12, 1990: Found a Ripco iron pipe brass plate witness corner stamped M.C. 20 lks(31.2') south. Measuring 13.2' south the M.C. position fell in Indian Lake.

Made the following refernces for the witness corner:

Found a 2" iron pipe N 3°-38'-00" W 6.97'

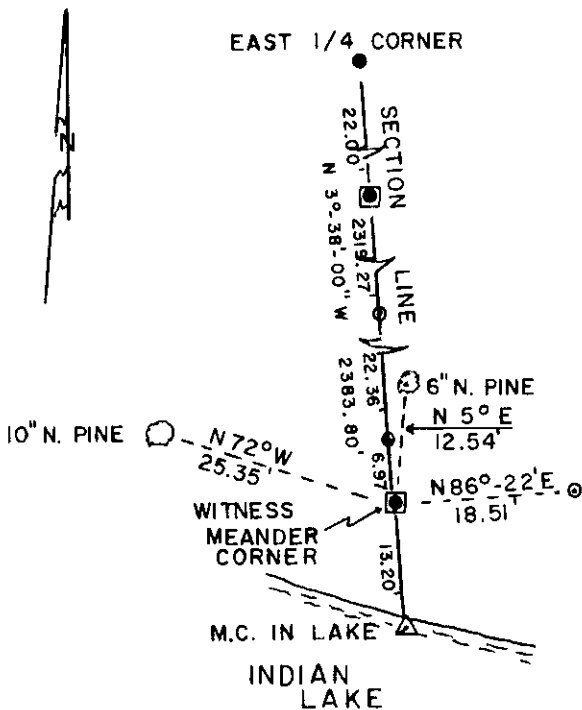
Set 1" iron pipe: N 3°-38'-00" W 29.33' & N 86°-22'-00" E 18.51'

Made the following bearing trees measured to a nail in the side:

6" N. Pine N 5° E 12.54'

10" N. Pine N 72°W 25.35'

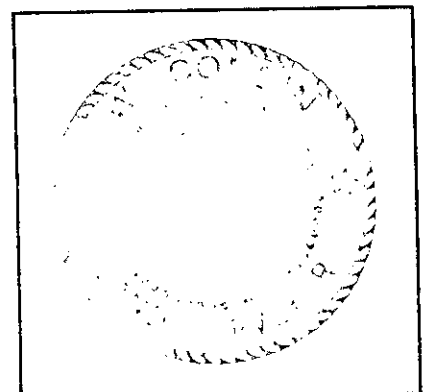
(c)(d)(e) Plan view of corner with ties to at least 4 witness monuments. If in disagreement with previously established corner, show the distances between the two corners and also indicate the ties to the disputed.



LEGEND
 SCALE: 1" = 20'

- ⊗ RIPCO IRON PIPE- BRASS PLATE WITNESS MON. FOUND
- 2" IRON PIPE FOUND
- RAILROAD SPIKE SET
- 1" IRON PIPE SET
- ⊙ BEARING TREE MEASURED TO A NAIL IN THE SIDE

REGISTER OF DEEDS OFFICE
 ONEIDA COUNTY WIS
FILED
 OCT 1 1990
 At _____ O'Clock _____ M
THOMAS H. LEIGHTON
 REGISTER OF DEEDS



(i) I, James L. Will, R.L.S. #1410
 hereby certify that the corner location on this record was determined by me or under my direction and control and that this U.S. Public Land Survey Monument Record is correct and complete to the best of my knowledge and belief.

James L. Will
 Signature

July 17, 1990
 Date

INDEX NO. Y Z - 25

3909360300