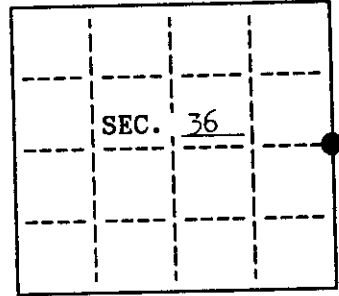


# U. S. PUBLIC LAND SURVEY MONUMENT RECORD

Note: This form is intended and designed to fulfill all requirements of Wisconsin Administrative Code, Chapter A-B 7.08 U.S. Public Land Survey Monument Record (3)(a)(b)(c)(d)(e)(f)(g)(h)(i). An additional sheet may be added if necessary to conform with said requirements.

(a) CORNER LOCATION: State Plane Coordinates  
 East 1/4 corner of Sec. 36 X Not Available  
 Township 39 North Y Not Available  
 Range 9 East Datum Base \_\_\_\_\_  
 Town/City Sugar Camp County of Oneida



(b) HISTORY OF ORIGINAL CORNER ESTABLISHMENT  
 Original Surveyor: Hiram Fellows Original B.T.'S  
 Date of Survey: Commenced July 1859 7" Tamarack N 63° W 16 lks  
 Completed July 1859 8" Tamarack N 61° E 21 lks

(b)(f)(g)(h) Description of monument found at this corner and if it was accepted, state all evidence (material, testimonial, occupational, plats, records, other monuments) used as a basis for accepting. If not accepted or if nothing was found, state evidence used as basis for establishing location. If reestablished through lost corner proportionate methods, indicate all monuments, distances and directions used to establish. Indicate type of monument and sign post found or set.

July 12, 1990: Could not find corner in road but found a Ripco iron pipe brass plate witness mon. stamped that the 1/4 corner is 22.00' north. Set a railroad spike N 3°-38'-00" W 22.00' on line with the witness corner & a witness M.C. Ripco mon. to the south.

Found the following bearing trees measured to a nail in the side:  
 3" Dead Tamarack N 6° W 37.60'  
 4" Tamarack N 40° E 47.85'

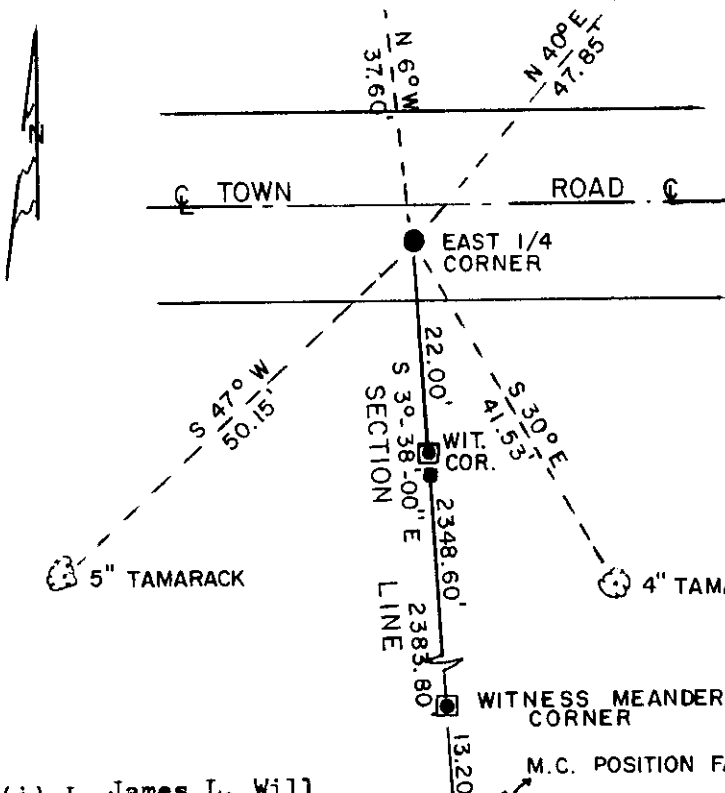
Made the following new bearing trees measured to a nail in the side:  
 5" Tamarack S 47° W 50.15'  
 4" Tamarack S 30° E 41.53'

Set a plastic sign marker by the Ripco witness monument-0.5' south.

3" DEAD TAMARACK      4" TAMARACK

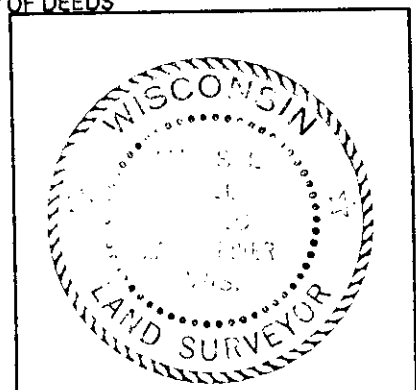
(c)(d)(e) Plan view of corner with ties to at least 4 witness monuments. If in disagreement with previously established corner, show the distances between the two corners and also indicate the ties to the disputed.

LEGEND  
 SCALE: 1" = 20'



- RAILROAD SPIKE SET IN PAVEMENT
- RIPCO IRON PIPE-BRASS PLATE FOUND
- ⊙ BEARING TREE MEASURED TO A NAIL IN THE SIDE
- △ COMPUTED POSITION
- PLASTIC SIGN MARKER SET

REGISTER OF DEEDS OFFICE  
 ONEIDA COUNTY, WIS.  
**FILED**  
 OCT 1 1990  
 At \_\_\_\_\_ O'Clock \_\_\_\_\_ M  
**THOMAS H. LEIGHTON**  
 REGISTER OF DEEDS



(i) I, James L. Will hereby certify that the corner location on this record was determined by me or under my direction and control and that this U.S. Public Land Survey Monument Record is correct and complete to the best of my knowledge and belief.

James L. Will Signature  
 July 17, 1990 Date

3909362000

INDEX NO. X - 25

# U.S. PUBLIC LAND SURVEY MONUMENT RECORD

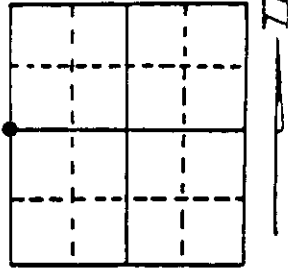
Note: This form is intended and designed to fulfill all requirements of Wisconsin Administrative Code, Chapter A-E 7.08 U.S. Public Land Survey Monument Record (3) (a) (b) (c) (d) (e) (f) (g) (h) (i). An additional sheet may be added if necessary to conform with said requirements.

(a) Corner location: Township 39 North

Range 10 East

Town/City/Village Sugar Camp

County Oneida



Section 31

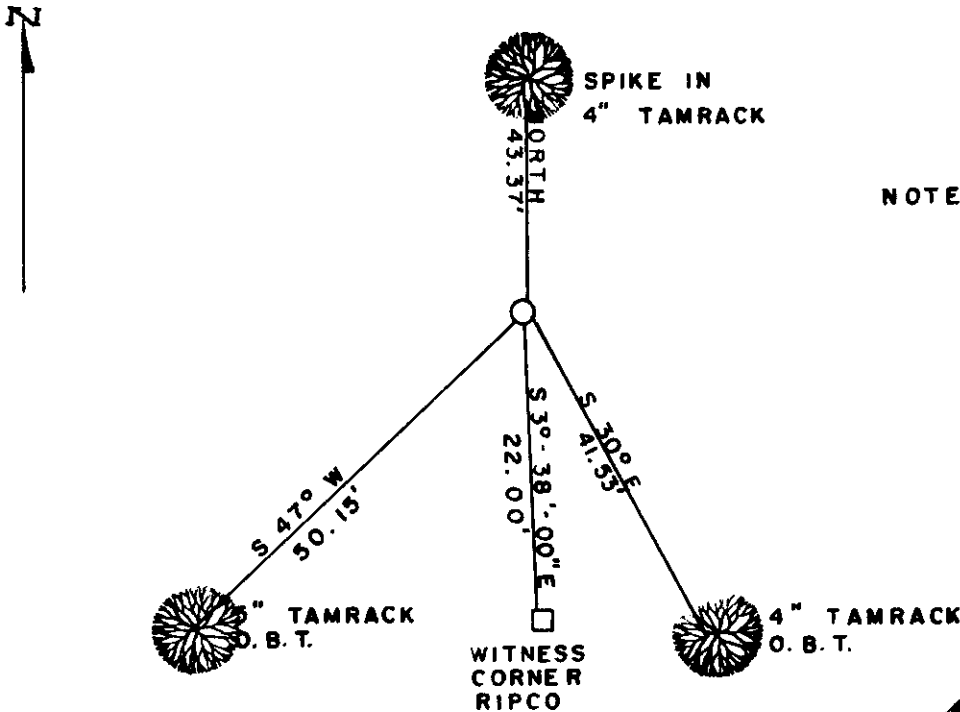
(b) (f) (g) (h) Description of monument found at this corner and if it was accepted, state all evidence (material, testimonial, occupational, plats, records, other monuments) used as a basis for accepting. If not accepted or if nothing was found, state evidence used as basis for establishing location. If reestablished through lost corner proportionate methods, indicate all monuments, distances and directions used to establish. Indicate type of monument found or set and sign post.

1863-Anderson set post 7" Tamrack north 63 degrees West 16 Links  
8" Tamrack North 61 degrees East 21 Links

1990-James Will set R.R. spike in pavement 3" Dead Tamrack  
North 6 degrees West 37.60' 4" Tamrack North 40 degrees East  
47.85' made new B.T.s 5" Tamrack South 47 degrees West  
50.15' 4" Tamrack South 30 degrees East 41.53'

1993-William E. Bandow found R.R. spike in C/L of Ripco  
Road and witnessed as shown below

(c) (d) (e) Plan view of corner with ties to at least 4 witness monuments. If in disagreement with previously established corner, show the distances between the two corners and also indicate the ties to the disputed corner.



NOTE: BEARINGS TAKEN WITH HAND HELD MAGNETIC COMPASS

NO SCALE

(i) I, William E. Bandow  
(type or print name) certify that the corner location on this record was determined by me or under my direction and control and that this U.S. Public Land Survey Monument Record is correct and complete to the best of my knowledge and belief.



William E. Bandow 3-11-93  
Signature Date

Stamp

3909362000

Index No. X-1