

State of Wisconsin

County of Oneida } ss.

I, James L. Will, do hereby certify that on the 28th day of January, 1986, I found evidence of the West one-quarter corner of Section 5, 39 North, Range 11 East, Fourth Principal Meridian, as described hereon; and that from this evidence I established a new monument and accessories as described hereon to perpetuate the original location of this corner.

Resident witnesses:

Michael E. Kober

U. S. Public Land Survey Monument Record

Index No. 2-1

History of original corner establishment:

Original corner was established during the course of the exterior of T 39 N, R 11 E of which the west line was done in July 1859 by H.O. Fellows, Deputy Surveyor.

Original B.T.'s:

10" Tamarack S 33° W 38 lks.
6" Spruce N 79° E 29 lks.

Description of corner evidence found:

Found 1" iron pipe on N-S fence line accepted in previous surveys.

Found the following bearing trees in place:

11 Tamarack N 60° W 10.62' (measurements to a nail in the side of the tree.)

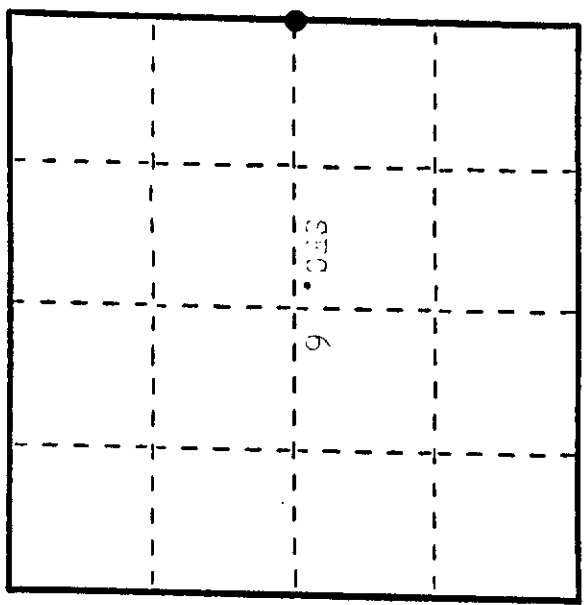
Description of monument and accessories I established to perpetuate the original location of this corner.

Replaced the iron pipe with a 2"x6" iron pipe caps cap 8" above the ground.

Blazed and scribed the following new bearing trees:

9" Tamarack S 130° W 29.67' (Measurements are to a nail in the
6" Tamarack S 180° E 23.48' side of the tree.)
6" Tamarack N 73° E 13.66'

Set a 4"x4" wood post 1.0' northeast of the corner.



● - Corner monument restored.

Dated at East River, Wis., this 31st day of January, 1986.

Signature James L. Will Title Registered Land Surveyor Registration No. 8-17110
(County Surveyor, Registered Land Surveyor, or other duly authorized official)

Office of Register of Deeds, County of Oneida
Instrument was filed in this office for record on the 1st day of February, 1986
at 8:30 o'clock A. M.

James L. Will
(Register of Deeds)

By James L. Will Deputy

Describe any material discrepancy between the location of the corner as restored or reestablished and the location of that corner as previously restored or reestablished by distance and direction. Show the discrepancy on the plan view drawing under (d), above. Show the distances between the corner as previously restored or reestablished and (1) the corner as restored or reestablished, and (2) to at least 2 of the witness monuments shown on the drawing in (d), above.

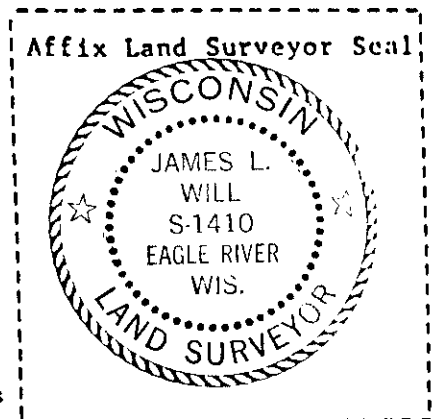
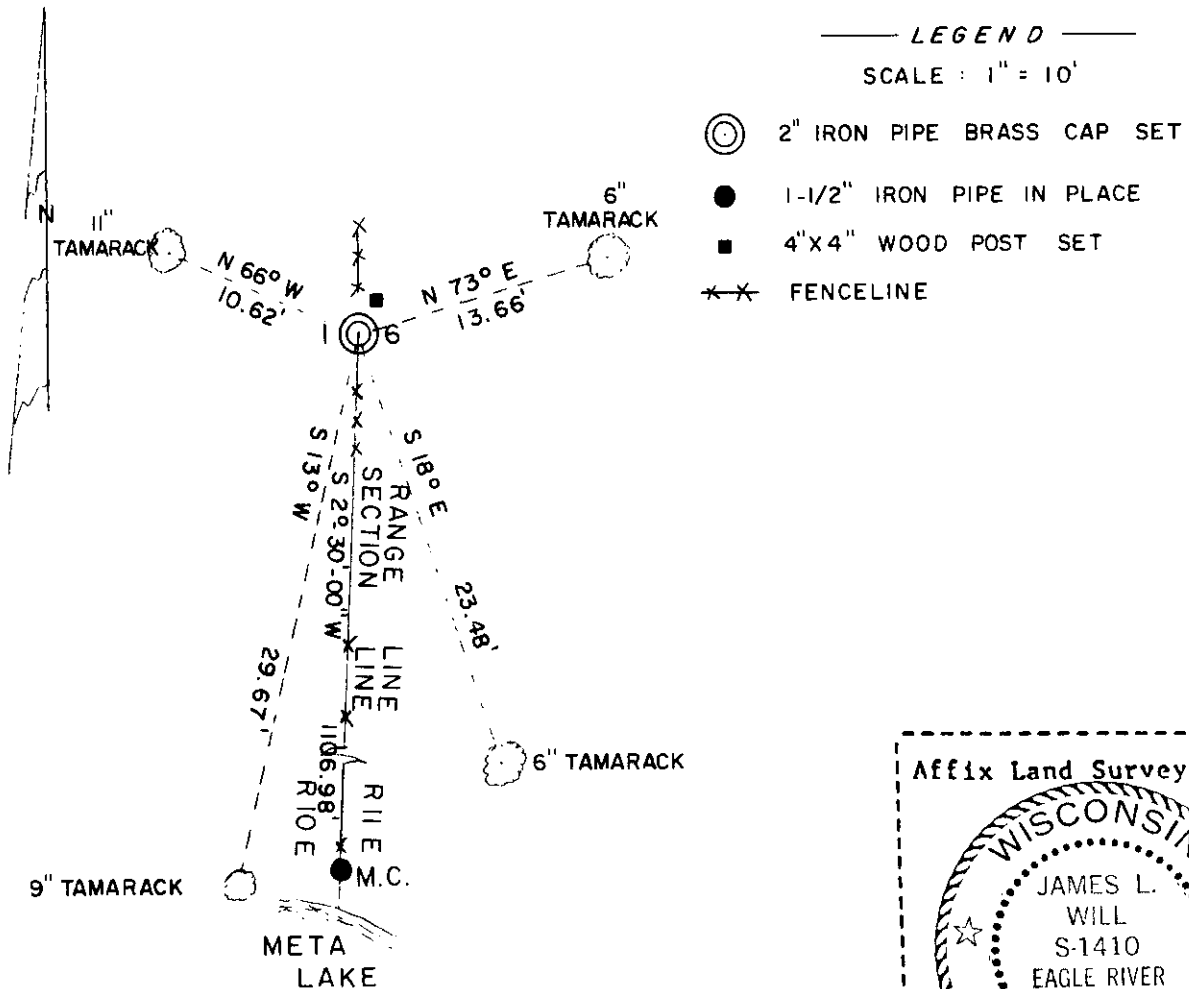
None. See sketch below.

Was the corner restored through acceptance of (1) an obliterated evidence location, or, (2) a found perpetuated location?

Corner was restored through acceptance of a found perpetuated location.

Was the corner reestablished through lost corner proportionate methods? If so, show the method, including the directions and distances to other public land survey corners used as evidence or used for proportioning in determining the corner location?

No.



I, James L. Will, R.L.S. # 1410
 (type or print name) certify that the corner location shown
 on this record was determined by me or under my direction and
 control and that this U.S. Public Land Survey Monument Record is
 correct and complete to the best of my knowledge and belief.

James L. Will
 Signature

January 31, 1986
 Date