

CERTIFIED LAND CORNER RESTORATION

Index No. J-25

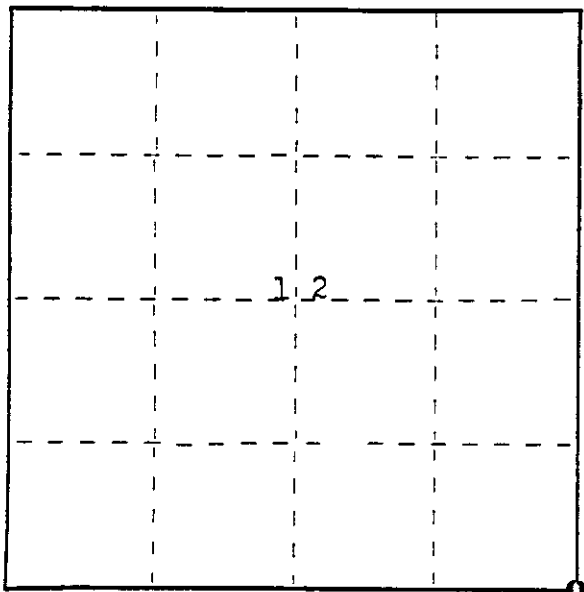
Stock No. 26272
FORM 985

State of Wisconsin }
County of Vilas } ss.

I James L. Will, do hereby certify that on the 29th day of October, 19 81, I found evidence of the Southeast Section corner of Section 12 Township 39, North, Range 10 East, Fourth Principal Meridian, as described hereon; and that from this evidence I established a new monument and accessories as described hereon to perpetuate the original location of this corner.

Resident witnesses:

Eric Zyhowski



● = Corner monument restored.

History of original corner establishment:

Original corner was established in the course of the subdivision of T 39 N, R 10 E which was started on September 30, 1863 and completed on October 7, 1863 by William E. Daugherty, Deputy Surveyor.

Original B.T.'S

20" W. Pine N 68° W 90 Lks.
18" Y. Pine N 2 1/2° E 87 Lks.

Description of corner evidence found:

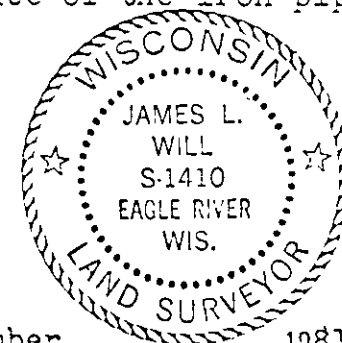
Found iron pipe in place commonly used and accepted as the Section corner in previous surveys by other surveyors.

Found the following Bearing Trees:

8" Oak N 5° W 26.96 feet.
13" W. Pine N 82° E 30.31 feet.

Description of monument and accessories I established to perpetuate the original location of this corner.

Set 2" Dia. x 5' long iron pipe with brass cap in place of the iron pipe.
Set 4" x 4" Cedar post Northeast of the corner.



Dated at Eagle River, Wis., this 2nd day of November, 1981

Signature James L. Will Title Deputy County Surveyor Registration No. S-1410
(County Surveyor, Registered Land Surveyor, or other duly authorized official)

Office of Register of Deeds, County of _____, I hereby certify that the within instrument was filed in this office for record on the _____ day of _____ 19____ at _____ o'clock _____ M.

(Register of Deeds)

By _____ Deputy

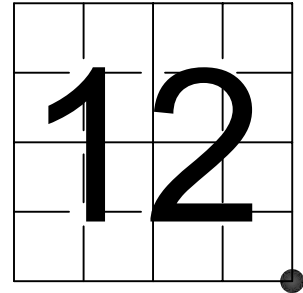
3910120000

U. S. PUBLIC LAND SURVEY MONUMENT RECORD

NOTE: This form is intended and designed to fulfill all requirements of Wisconsin Administrative Code, Chapter A-E 7.08 U.S. Public Land Survey Monument Record (3) (a-i)

A-E 7.08(3)(a) Identity of corner:
SOUTHEAST CORNER SECTION 12,
TOWNSHIP 39 NORTH,
RANGE 10 EAST OF THE 4TH PM,
TOWN OF LINCOLN,
COUNTY OF VILAS

WISCORS - ONEIDA COUNTY
N: 249,926.814 USft (XXX,XXX.XXX)
E: 323,773.530 USft (XXX,XXX.XXX)
Datum: NAD83 (2011)
GNSS Method RTK
GNSS Control WISCORS VRS



The coordinate value shown has been verified by the average of two or more GPS observations at a markedly different time. Coordinates shown in parenthesis are previously published values.

A-E 7.08(3)(b)

Original Surveyor: Hiram C. Fellows - June - July 1859

NOTE: Previous monument record indicates original surveyor as William E. Daugherty.

Original Accessories:

White Pine	20	N 68° W	90 Links
Yellow Pine	18	N 2 1/2° E	87 Links

See previous Certified Land Corner Restoration - J-25- November 2, 1981 - Surveyor 1410 - James L. Will - THENCE:

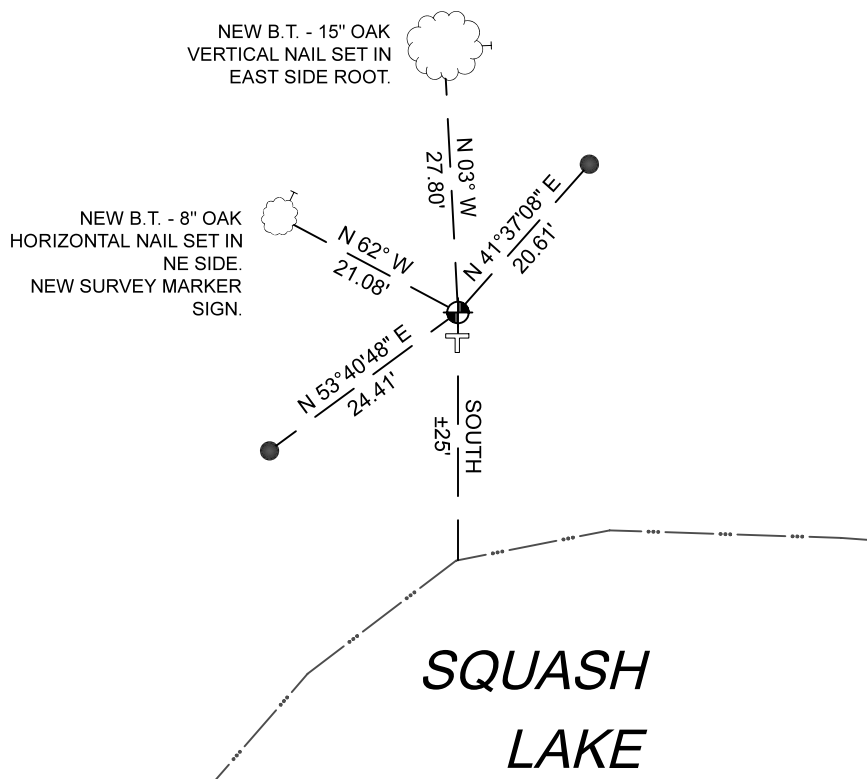
July 14, 2003 - Surveyor 2566 - David A. Konopacky - indicates this position as "2" diameter brass capped iron pipe found" on Oneida County Map #A1243.

July 15, 2003 - Surveyor 1410 - James L. Will - indicates this position as "Vilas County brass capped monument found" on Vilas County Map #B7239.

April 06, 2017 - Surveyor 1731 - Kip W. Soder - indicates this position as "Vilas Co. iron pipe brass cap monument found" on Oneida County Map #A3302.

October 23, 2023 - I found a 2" diameter iron pipe with a 3" brass cap stamped to identify the corner location. I also found a 4" x 4" cedar post intact and standing northeast of the monument ±0.75'. The monument extends ±15" above grade. I did not find any of Will's witnesses, and established 4 new witnesses as shown below.

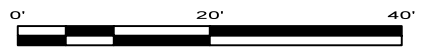
A-E 7.08(3)(c)(d) Plan view of corner with references to at least 4 witness monuments.



BEARINGS LISTED TO THE NEAREST SECOND ARE REFERENCED TO WISCONSIN COUNTY COORDINATE REFERENCE SYSTEM - ONEIDA COUNTY ZONE. ALL OTHER BEARINGS ARE MAGNETIC.

LEGEND

- This Corner
- 0.75" diameter X 18" long iron rod, set
- Vinyl T-post, set ±1.2 feet south of corner

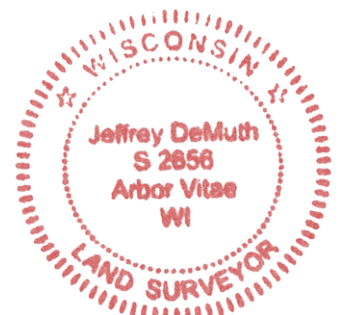


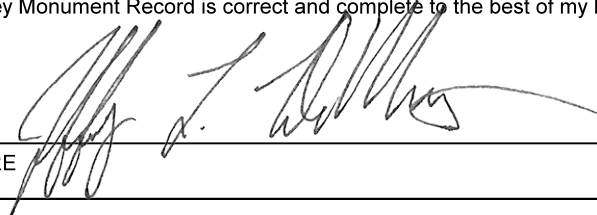
A-E 7.08(3)(e) 1981 Surveyor set a 2" iron pipe with a stamped brass cap. Subsequent surveyors found the same, as did I in 2023.

A-E 7.08(3)(f) I accept this monument as a FOUND PERPETUATED LOCATION of the corner.

A-E 7.08(3)(g)(h) This corner was not determined through lost-corner-proportionate methods.

A-E 7.08(3)(i) I, Jeffrey L. DeMuth, Professional Land Surveyor No. S-2656, hereby certify that the corner location on this record was determined by me or under my direction and control, and that this U.S. Public Land Survey Monument Record is correct and complete to the best of my knowledge, and belief.




SIGNATURE _____ DATE October 30, 2023