

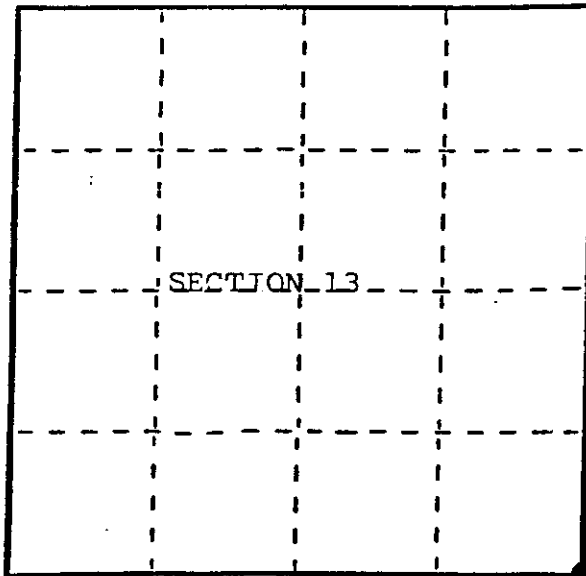
State of Wisconsin }
County of Vilas } ss.

I, Stephen L. Favorite, do hereby certify that on the 14th day of July, 1987, I found evidence of the Southeast corner of Section 13 Township 39 North, Range 10 East, Fourth Principal Meridian, as described hereon; and that from this evidence I established a new monument and accessories as described hereon to perpetuate the original location of this corner.

Resident witnesses:

Mike Stevens

Pete Vanderkloot



● = Corner monument restored.

SEC 13
SESE

U.S. Public Land Survey Monument Record

Index No. N-25

History of original corner establishment:

Original Surveyor: W.C. Fellows (Survey of Township Line.)

Date of Survey: July, 1859

Original Bearing Trees: 16" Y. Pine S 47° W 21 lks.
16" Y. Pine N 53° W 23 lks. 16" Y. Pine N 59° E 33 lks.
12" Y. Pine S 24° E 28 lks.

Description of corner evidence found:

Found 1" diam iron pipe at the intersection of Saltzberry Road and O'Neil Road.

Wm. Camerons BT's found: 18" N. Pine N 64° E, 23.1'
20" N. Pine N 47° W, 74.8'

Description of monument and accessories I established to perpetuate the original location of this corner.

Set (4) 1" x 30" aluminum magnetic reference monuments with 2 1/2" diam. cap bearing: N 38°29'00" E, 31.90 feet;
S 38°29'00" W, 62.17 feet;
N 35°23'50" W, 71.59 feet;
S 35°23'50" E, 71.65 feet. (from Section corner.)

Set witness post NE, 1.0' from NW reference monument.

Dated at Eagle River, Wis., this 29th day of March, 1988.

Signature: *Stephen L. Favorite* Title: Reg. Land Surveyor Registration No. S-1616.
(County Surveyor, Registered Land Surveyor, or other duly authorized official)

Office of Register of Deeds, County of _____, I hereby certify that the within instrument was filed in this office for record on the _____ day of _____, 19____ at _____ o'clock _____ M.

(Register of Deeds)

By _____ Deputy

3910130000

Describe any material discrepancy between the location of the corner as restored or reestablished and the location of that corner as previously restored or reestablished by distance and direction. Show the discrepancy on the plan view drawing under (d), above. Show the distances between the corner as previously restored or reestablished and (1) the corner as restored or reestablished, and (2) to at least 2 of the witness monuments shown on the drawing in (d), above.

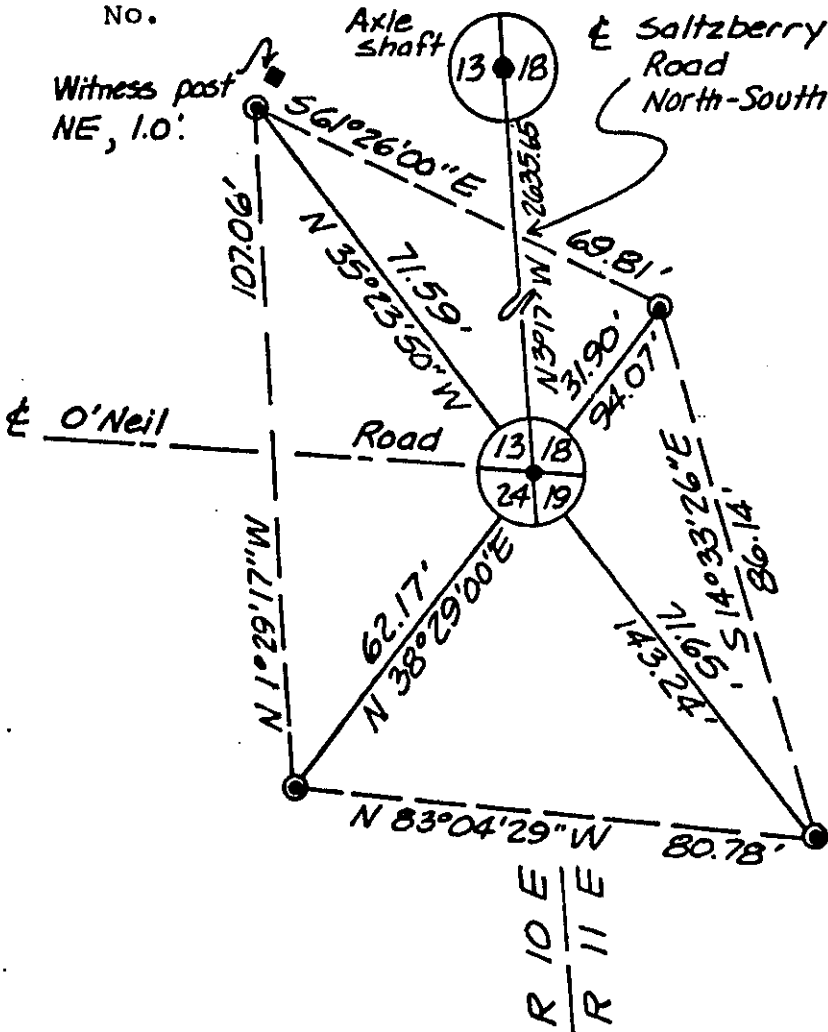
None.

Was the corner restored through acceptance of (1) an obliterated evidence location, or, (2) a found perpetuated location?

Found perpetuated location.

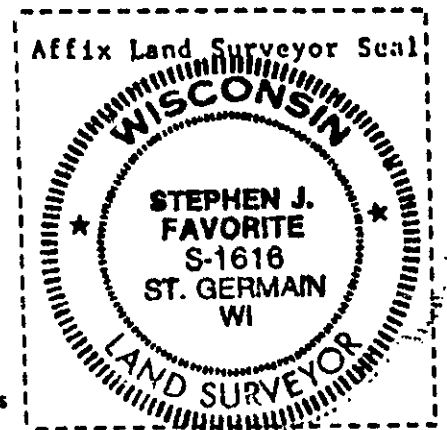
Was the corner reestablished through lost corner proportionate methods? If so, show the method, including the directions and distances to other public land survey corners used as evidence or used for proportioning in determining the corner location?

No.



Scale 1" = 30'

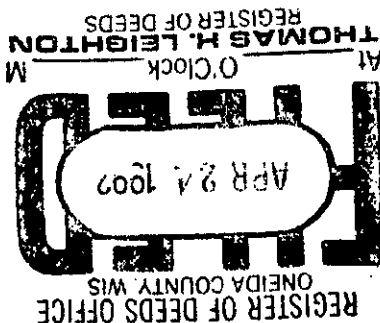
- denotes 1" X 30" with 2 1/2" diam. cap - Vilas County reference monument set.
- denotes 1" diam. iron pipe found in place.



I, Stephen J. Favorite RLS #S-1616
 (type or print name) certify that the corner location shown on this record was determined by me or under my direction and control and that this U.S. Public Land Survey Monument Record is correct and complete to the best of my knowledge and belief.

Stephen J. Favorite
 Signature

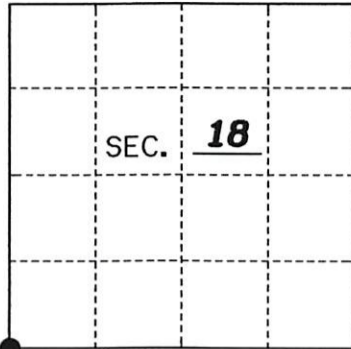
March 29, 1988
 Date



U.S. PUBLIC LAND SURVEY MONUMENT RECORD

Note: This form is intended and designed to fulfill all requirements of Wisconsin Administrative Code, Chapter A-E 7.08 U.S. Public Land Monument Record (3)(a)(b)(c)(d)(e)(f)(g)(h)(i). An additional sheet may be added if necessary to conform with said requirements. Deeds Square

(a) CORNER LOCATION: Southwest
 Section 18 Corner of Section 18
 Township 39 North, Range 11 East
 Township/City Three Lakes
 County of Oneida



REGISTER OF DEEDS OFFICE
ONEIDA COUNTY
FILED

JAN 22 2021

KYLE J. FRANSON
REGISTER OF DEEDS

NAD 83 (2011)

(b) HISTORY OF ORIGINAL ESTABLISHMENT
 Original Surveyor: W.C. Fellows
 Date of Survey: Survey of the Township Line 1859
 Original B.T.'s: 16" Y. Pine S47°W 21 lks.
16" Y. Pine N53°W 23 lks.
16" Y. Pine N59°E 33 lks.
12" Y. Pine S24°E 28 lks.

County or State Plane Coordinates
 Northing 244721.706'
 Easting 324080.273'
 Datum Base WISCORS-ONEIDA GRID

The coordinate values shown have been determined by the average of multiple RTK GPS observations taken initially and returning to the site on a different day at a different time and taking additional multiple RTK GPS observations and averaging those with the initial observations.

(b)(f)(g)(h) Description of monument found at this corner and if it was accepted, state all evidence (material, testimonial, occupational, plats, records, other monuments) used as a basis for accepting. If not accepted or if nothing was found, state evidence used as basis for establishing location. If reestablished through lost corner proportionate methods, indicate all monuments, distances and directions used to establish. Indicate type of monument and sign post found or set.

As part of an Oneida County Land Information Office contract to preserve Public Land Survey System corners in roadways that may be obliterated due to road resurfacing, I have performed the following corner maintenance as described below:

May, 1970: William Cameron accepts a 1" dia. iron pipe at the intersection of Saltberry Road and O'Neil Road and makes the following B.T.'s : 18" N. Pine N64°E 23.1' and 20" N. Pine N47°W 74.8'.

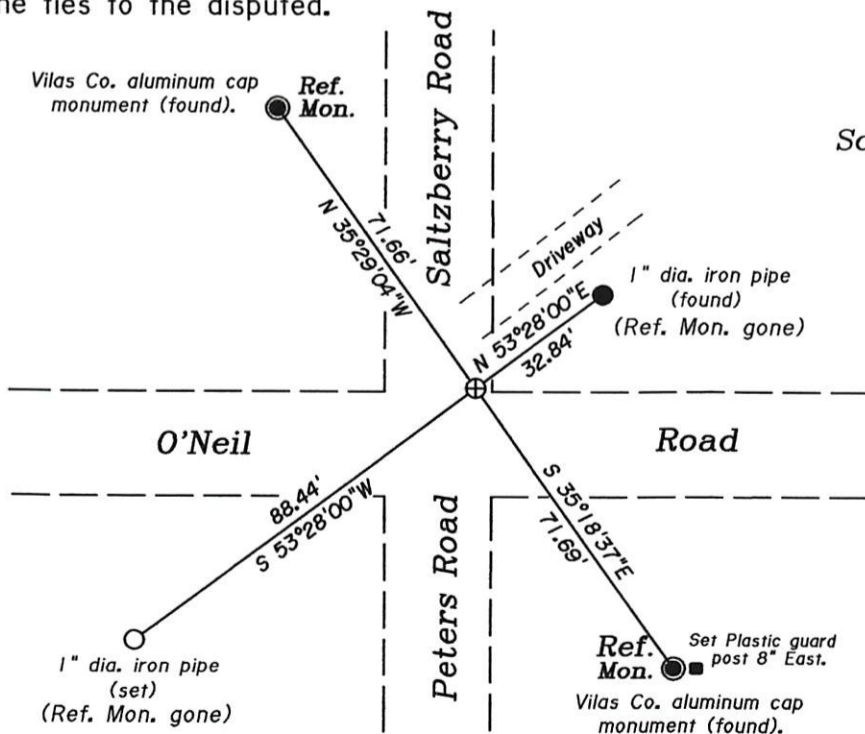
July, 1987: Stephen Favorite accepts the 1" dia. iron pipe near the intersection of Saltberry and O'Neil Roads and sets 4 Vilas Co. aluminum cap Witness Corners and files a U.S.P.L.S. Monument Record with Oneida Co. records.

June, 2019: Kip W. Soder finds a P.K. nail near the intersection of Saltberry & O'Neil Roads at the position of the 1" dia. iron pipe and tie references as shown below.

December 2019: Thomas Boettcher and Kip Soder return to the site and set a magnetic P.K. Nail in the new pavement after road resurfacing. We took a series of RTK GPS readings for averaging.

December 2020: Thomas Boettcher and Kip Soder return to the site and find the P.K. nail in the new road surface. We checked the references as shown below and took a series of RTK GPS readings to average with the previous observations.

(c)(d)(e) Plan view of the corner with ties to at least 4 witness monuments. If in disagreement with previously established corner, show the distances between the two corners and also indicate the ties to the disputed.



Scale: 1" = 40'



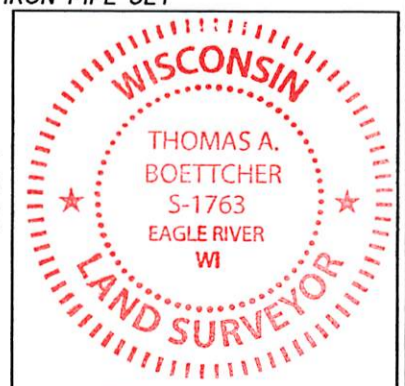
-Legend-

- VILAS CO. REF. MON. FOUND IN PLACE
- 1" DIA. IRON PIPE FOUND
- ⊕ MAG NAIL FOUND AND RESET IN PAVEMENT
- 1" DIA. IRON PIPE SET

(i) I, Thomas A. Boettcher P.L.S. No. 1763

hereby certify that the corner location on this record was determined by me or under my direction and control and that this U.S. Public Land Survey Monument Record is correct and complete to the best of my knowledge and belief.

Signature [Signature] Date December 23, 2020



Index No. 39/01/30000