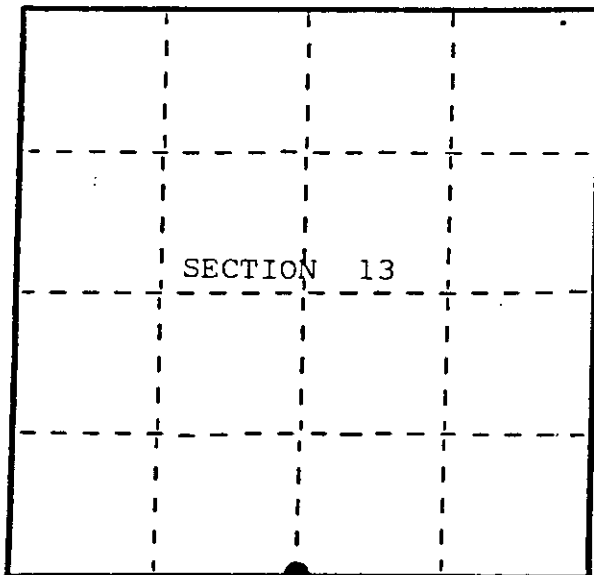


State of Wisconsin }
County of Vilas } ss.

I, Stephen J. Favorite, do hereby certify that on the 8th day of March, 1988, I found evidence of the South 1/4 corner of Section 13 Township 39, North, Range 10 East, Fourth Principal Meridian, as described hereon; and that from this evidence I established a new monument and accessories as described hereon to perpetuate the original location of this corner.

Resident witnesses:

Mike Stevens



● - Corner monument restored.

SBC 13
SE-SW
SW-SW

U.S. Public Land Survey Monument Record

Index No. N-23

History of original corner establishment:

Original Surveyor: Wm. Daugherty
Date of Survey: October, 1863
Original Bearing trees: 7" Birch S 28° W, 34 lks.
8" Aspen N 52° E, 63 lks.

Description of corner evidence found:

Found 1" i. pipe in the center of O'Neil Road.
Fence line runs north.
Pipe accepted as the 1/4 cor. by Wm. Cameron of Northwoods Surveyors, Inc. in May, 1970.
BT's found: 15" N. Pine N 45° E, 37.0 feet.
17" W. Pine N 50° W, 48.0 feet.

Description of monument and accessories I established to perpetuate the original location of this corner.

Set (4) 1" X 30" alum. Vilas County reference monuments with 2 1/2" diam. cap.

Reference monuments bear: N 34°04'00" E, 62.20 feet;
S 34°04'00" W, 46.01 feet;
S 32°33'40" E, 46.83 feet;
N 32°33'40" W, 57.53 feet.

Set wood post NW 1.0' from SW reference monument.

Dated at Eagle River, Wis., this 30 day of March, 1988

Signature Stephen J. Favorite Title Registered Land Surveyor Registration No. S-1616
(County Surveyor, Registered Land Surveyor, or other duly authorized official)

Office of Register of Deeds, County of _____, I hereby certify that the within instrument was filed in this office for record on the _____ day of _____, 19____ at _____ o'clock _____ M.

(Register of Deeds)

By _____ Deputy

3910130020

Describe any material discrepancy between the location of the corner as restored or reestablished and the location of that corner as previously restored or reestablished by distance and direction. Show the discrepancy on the plan view drawing under (d), above. Show the distances between the corner as previously restored or reestablished and (1) the corner as restored or reestablished, and (2) to at least 2 of the witness monuments shown on the drawing in (d), above.

None.

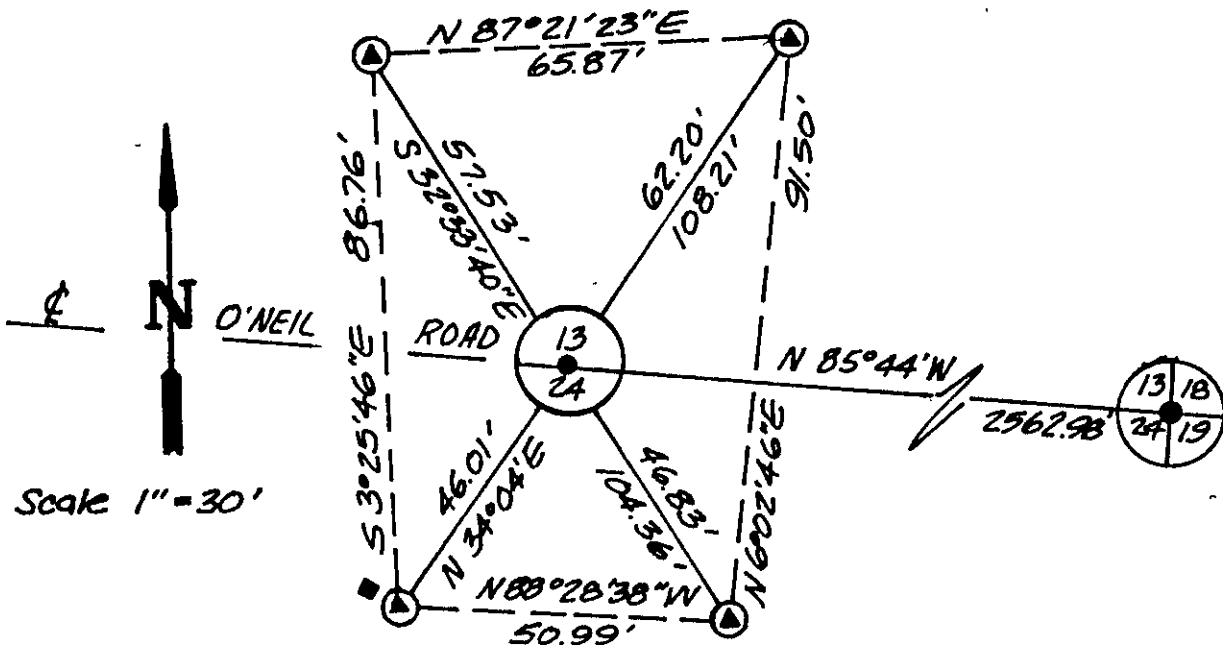
REGISTER OF DEEDS OFFICE
ONEIDA COUNTY, WIS.
FILED
JAN 17 1995
At _____ O'Clock _____ M
THOMAS H. LEIGHTON
REGISTER OF DEEDS

Was the corner restored through acceptance of (1) an obliterated evidence location, or, (2) a found perpetuated location?

Found perpetuated location.

Was the corner reestablished through lost corner proportionate methods? If so, show the method, including the directions and distances to other public land survey corners used as evidence or used for proportioning in determining the corner location?

No.



- 1" iron pipe found in place
- ⊙ 1" x 30" alum. capped Vilas County reference monument set.
- Witness post set-NW, 1.0'



I, Stephen J. Favorite, RLS#S-1616,
(type or print name) certify that the corner location shown on this record was determined by me or under my direction and control and that this U.S. Public Land Survey Monument Record is correct and complete to the best of my knowledge and belief.

Stephen J. Favorite
Signature

March 30, 1988
Date

U.S. PUBLIC LAND SURVEY MONUMENT RECORD

Note: This form is intended and designed to fulfill all requirements of Wisconsin Administrative Code, Chapter A-E 7.08 U.S. Public Land Monument Record (3)(a)(b)(c)(d)(e)(f)(g)(h)(i). An additional sheet may be added if necessary to conform with said requirements. Deeds Square

(a) CORNER LOCATION: North 1/4
 _____ Corner of Section 24
 Township 39 North, Range 10 East
 Township/City Three Lakes
 County of Oneida



REGISTER OF DEEDS OFFICE
 ONEIDA COUNTY
 FILED

JAN 22 2021

KYLE J. FRANSON
 REGISTER OF DEEDS

NAD 83 (2011)

(b) HISTORY OF ORIGINAL ESTABLISHMENT
 Original Surveyor: William E. Daugherty
 Date of Survey: 1863
 Original B.T.'s: 7" Birch S28°W 34 lks.
8" Aspen N52°E 63 lks.

The coordinate values shown have been determined by the average of multiple RTK GPS observations taken initially and returning to the site on a different day at a different time and taking additional multiple RTK GPS observations and averaging those with the initial observations.

County or State Plane Coordinates
 Northing 244899.752'
 Easting 321523.294'
 Datum Base WISCORS-ONEIDA GRID

(b)(f)(g)(h) Description of monument found at this corner and if it was accepted, state all evidence (material, testimonial, occupational, plats, records, other monuments) used as a basis for accepting. If not accepted or if nothing was found, state evidence used as basis for establishing location. If reestablished through lost corner proportionate methods, indicate all monuments, distances and directions used to establish. Indicate type of monument and sign post found or set.

As part of an Oneida County Land Information Office contract to preserve Public Land Survey System corners in roadways that may be obliterated due to road resurfacing, I have performed the following corner maintenance as described below:

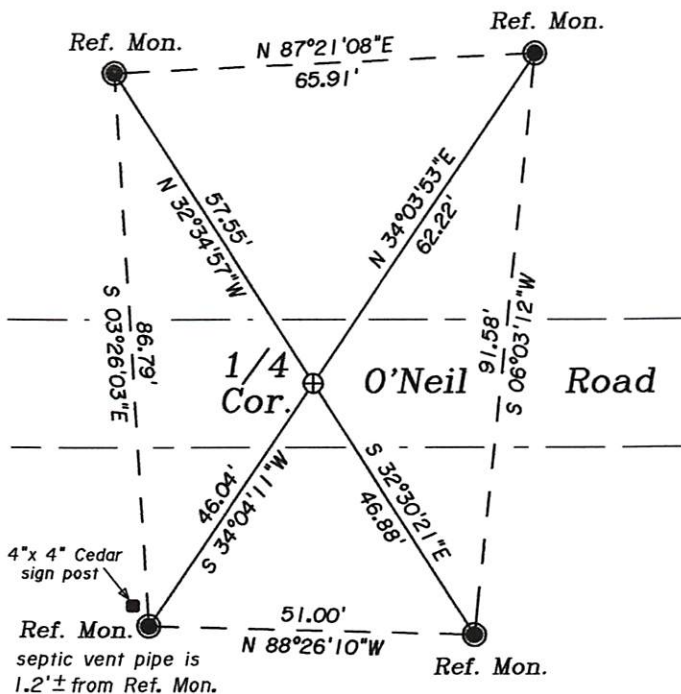
May, 1970: William Cameron of Northwoods Surveyors accepts the 1" iron pipe in road as the 1/4 corner with the following B.T.'s: 15" N. Pine N45°E 37.0' and 17" W. Pine N50°W 48.0'

March, 1988: Stephen Favorite finds the 1" iron pipe in the centerline of O'Neil Road and sets 4 Vilas County aluminum cap Witness Corners and prepares a U.S. Public Land Survey Monument Record form and file it with Oneida Co. records.

June, 2019: Kip W. Soder finds a P.K. nail in the centerline of O'Neil Road and accepts it as the 1/4 corner position and ties the 4 following Witness Corners as shown below.

December 21, 2020: I, Thomas A. Boettcher returned to the site and found the mag nail in the pavement in place. I checked the witnesses as shown below and took a series of RTK GPS observations to average with the initial observations taken in June of 2019.

(c)(d)(e) Plan view of the corner with ties to at least 4 witness monuments. If in disagreement with previously established corner, show the distances between the two corners and also indicate the ties to the disputed.



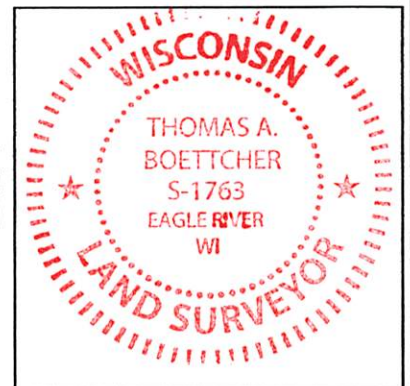
Scale: 1" = 30'

- Legend-
- Vilas Co. reference mon. found
 - ⊕ P.K. Nail in pavement

(i) I, Thomas A. Boettcher P.L.S. No. 1763

hereby certify that the corner location on this record was determined by me or under my direction and control and that this U.S. Public Land Survey Monument Record is correct and complete to the best of my knowledge and belief.

Signature _____ Date December 21, 2020



Index No. 3910130020