

This form is intended to fulfill the requirements of Chapter A-E7.08 (3)(a) thru (i) U.S. Public Land Survey Monument Location Record, Wisconsin Administrative Code. Use the reverse side of form for continuation.

**U.S. PUBLIC LAND SURVEY MONUMENT LOCATION RECORD**

Recorders Data

USPLS CORNER: EAST WIT MC SECTION: 24 TOWNSHIP: 39 NORTH RANGE: 10 EAST  
 NAME OF WATERWAY FOR M.C. CORNER: CLEARWATER LAKE SECTION LINE: NORTH  
 CITY/VILLAGE/TOWN OF: THREE LAKES COUNTY OF: ONEIDA

Description of monument found or placed and all other evidence used as the basis for monument location; including monuments and measurements required if the corner location was reestablished by lost corner proportionate methods. Also indicate name of the original surveyor, original survey date and the corner monument, bearing trees, witness or other reference monuments established, including measured bearing and distance ties, from available survey records.

Found and accepted an old plumb and secure 3/4" dia. iron pipe with uncapped top 2" up, which I left in place and drove a standard 2" dia. by 30" long aluminum pipe monument over it with stamped Oneida County cap 3" above grade. Corner falls 5' East of lakeshore line bearing N35°W this date and on the westerly right-of-way line of abandoned Chicago & Northwestern Railroad.

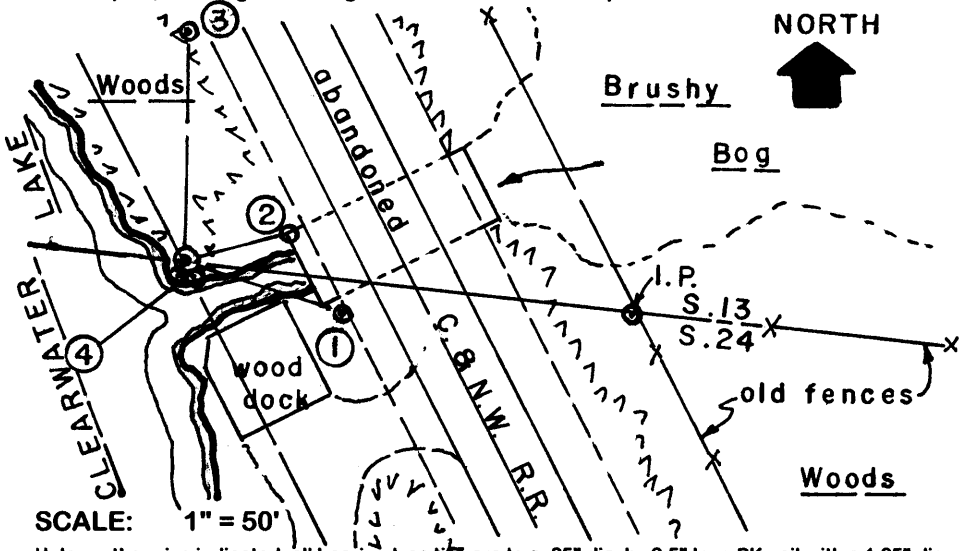
In September-October 1863, William E. Daugherty/GLO did not set any MC post on the North line of Section 24 per original survey notes.

In September 1972, Robert Bandow/RLS 104 found an iron pipe at this Witness MC per plat of survey filed as B-635 in Oneida County survey records.

In November 1978, James L. Will/RLS 1410 also found an iron pipe as this Witness MC per plats of survey filed as B-199 and B-1093 in Oneida County survey records. I also found an old 3/4" dia. iron pipe on railroad right of way fenceline as indicated on the plat of survey as being S83°44'E 117.23' on the North line of Section 24 from the Witness MC.

This recovery completed August 3, 2004; there were no direct witnesses.

Plan view map of monument location with bearing and distance ties to a minimum of four(4) described witness or reference monuments of concrete, natural stone, iron, live bearing trees or equivalent material. If applicable, also show a minimum of two(2) bearing and distance ties to any other monument found and not accepted; including the bearing and distance from the accepted monument.

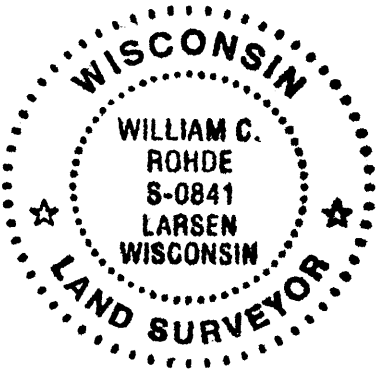


- WITNESS MONUMENT TIES:**
- ① New 5" Pw BT S65°E 43.84'.
  - ② N73°E 26.90' to NW top sharp corner of old large stone slab culvert on westerly side of abandoned railroad bed which I marked with blaze orange paint keel.
  - ③ New 8" Pw BT North 57.13'.
  - ④ New 5" Or BT S15°E 4.22'.
- I set a standard white poly 'T' marker post 10" SE of the corner monument and flagged all new BTs blaze orange.

SCALE: 1" = 50'

Unless otherwise indicated, all bearing tree ties are to a .25" dia. by 2.5" long PK nail with a 1.25" dia. steel washer driven into unblazed right face and a .25" dia. by 2.5" long PK nail with a 2" dia. steel washer stamped BT is also driven into unblazed face of bearing tree at DBH; the basis for measured bearings is by compass to nearest degree and all tie distances are measured horizontal by steel tape corrected to nearest 1/100th feet at standard temperature of 68° F.

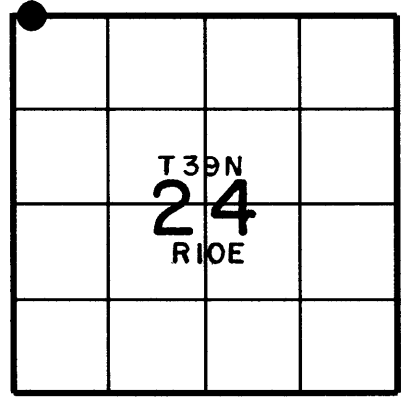
RLS SEAL:



LAND SURVEYOR CERTIFICATE:

I, William C. Rohde, hereby certify that I am duly licensed as a Professional Land Surveyor in the State of Wisconsin; that this USPLS monument location was determined by me and/or under my direct supervision and control; and that this U.S. Public Land Survey Monument Location Record is true and correct to the best of my knowledge and belief.

Signed *William C. Rohde*  
 William C. Rohde RLS 841



SECTION LOCATION MAP  
 INDEX NO. N 21-22

3910130034