

State of Wisconsin }  
 County of Vilas } ss.

U. S. Public Land Survey Monument Record

Index No. L-25

3910132000

History of original corner establishment:

I Stephen J. Favorite, do hereby certify that on the 14th day of July, 1987, I found evidence of the East 1/4 corner of Section 13 Township 39 North, Range 10 East, Fourth Principal Meridian, as described hereon; and that from this evidence I established a new monument and accessories as described hereon to perpetuate the original location of this corner.

Original Surveyor: W.C. Fellows (Survey of Township line.)  
 Date of Survey: July, 1859  
 Original BT's: 16" Y. Pine S 47° W 21 lks.  
                   6" Birch N 58° W 24 lks.

Description of corner evidence found:

Found axle shaft near the intersection of Saltzberry Road and Oneida Farm Road.  
 Monument was set by Wm. Cameron in May, 1970.  
 Reference Power poles found: S 32° E, 37.8 feet.  
                                           S 51° W, 38.6 feet.

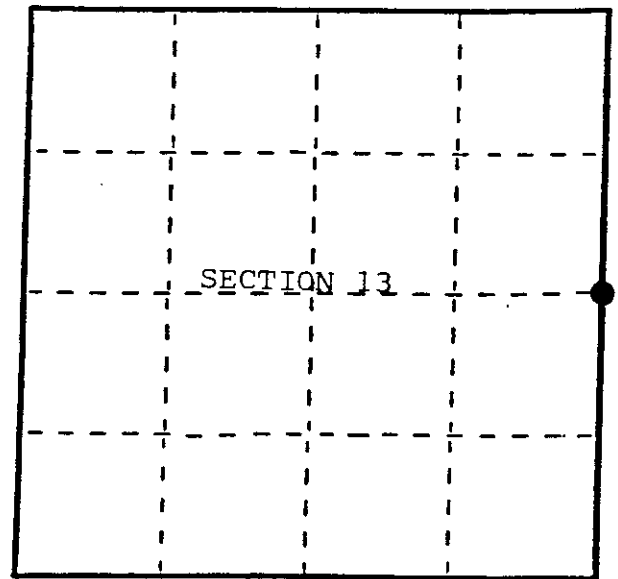
Resident witnesses:

Mike Stevens

Peter Vanderkloot, JR.

Description of monument and accessories I established to perpetuate the original location of this corner.

Set (4) 1" x 30" Vilas County alum. magnetic reference monuments with a 2 1/2" cap.  
 Reference monuments bear; N 40°37'30" W, 55.60 feet;  
                                           S 40°37'30" E, 55.92 feet;  
                                           N 47°55'40" E, 44.04 feet;  
                                           S 47°55'40" W, 50.88 feet.  
 Set witness post East, 1.0 feet from NE reference monument.



● = Corner monument restored.

Dated at Eagle River, Wis., this 29 th day of March, 1988.

Signature Stephen J. Favorite Title Reg. Land Surveyor Registration No. S-1616  
 (County Surveyor, Registered Land Surveyor, or other duly authorized official)

Office of Register of Deeds, County of \_\_\_\_\_, I hereby certify that the within instrument was filed in this office for record on the \_\_\_\_\_ day of \_\_\_\_\_, 19\_\_\_\_ at \_\_\_\_\_ o'clock \_\_\_\_\_ M.

(Register of Deeds)

By \_\_\_\_\_ Deputy

502 13  
644

Describe any material discrepancy between the location of the corner as restored or reestablished and the location of that corner as previously restored or reestablished by distance and direction. Show the discrepancy on the plan view drawing under (d), above. Show the distances between the corner as previously restored or reestablished and (1) the corner as restored or reestablished, and (2) to at least 2 of the witness monuments shown on the drawing in (d), above.

None.

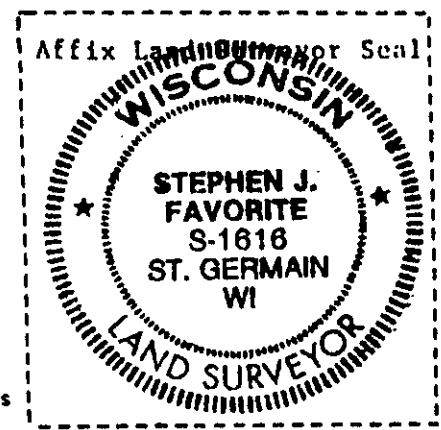
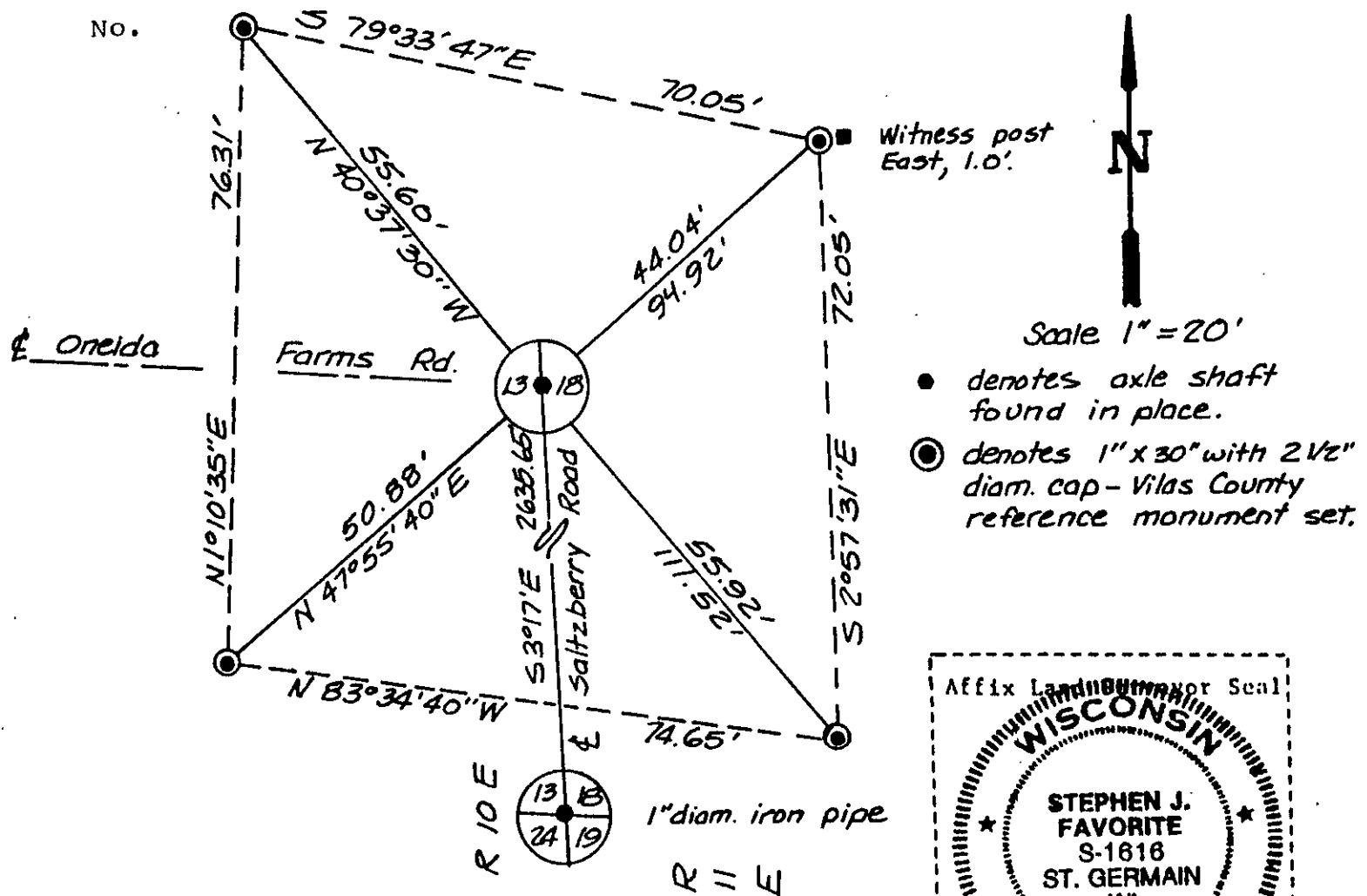
REGISTER OF DEEDS OFFICE  
ONEIDA COUNTY, WIS  
**FILED**  
JAN 17 1995  
At \_\_\_\_\_ O'Clock \_\_\_\_\_ M  
**THOMAS H. LEIGHTON**  
REGISTER OF DEEDS

Was the corner restored through acceptance of (1) an obliterated evidence location, or, (2) a found perpetuated location?

Found perpetuated location.

Was the corner reestablished through lost corner proportionate methods? If so, show the method, including the directions and distances to other public land survey corners used as evidence or used for proportioning in determining the corner location?

No.



I, Stephen J. Favorite RLS #S-1616  
(type or print name) certify that the corner location shown on this record was determined by me or under my direction and control and that this U.S. Public Land Survey Monument Record is correct and complete to the best of my knowledge and belief.

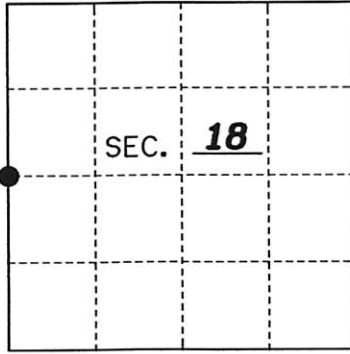
Stephen J. Favorite  
Signature

March 29, 1988  
Date

# U.S. PUBLIC LAND SURVEY MONUMENT RECORD

Note: This form is intended and designed to fulfill all requirements of Wisconsin Administrative Code, Chapter A-E 7.08 U.S. Public Land Monument Record (3)(a)(b)(c)(d)(e)(f)(g)(h)(i). An additional sheet may be added if necessary to conform with said requirements. Deeds Square

(a) CORNER LOCATION: West 1/4  
 \_\_\_\_\_ Corner of Section 18  
 Township 39 North, Range 11 East  
 Township/City Three Lakes  
 County of Oneida



REGISTER OF DEEDS OFFICE  
ONEIDA COUNTY  
FILED

JAN 22 2021

KYLE J. FRANSON  
REGISTER OF DEEDS

(b) HISTORY OF ORIGINAL ESTABLISHMENT  
 Original Surveyor: W.C. Fellows  
 Date of Survey: 1859  
 Original B.T.'s: Survey of the Township Line  
16" Y. Pine S47°W 21 lks.  
6" Birch N58°W 24 lks.

County or State Plane Coordinates  
 Northing 247350.816'  
 Easting 323915.657'  
 Datum Base WISCORS-ONEIDA GRID

NAD 83 (2011)

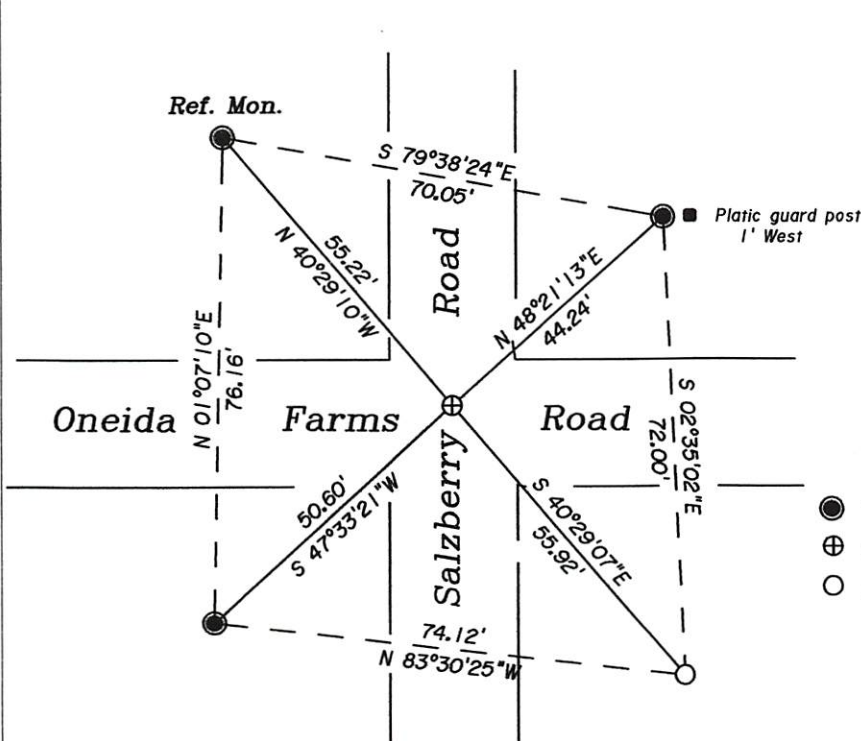
The coordinate values shown have been determined by the average of multiple RTK GPS observations taken initially and returning to the site on a different day at a different time and taking additional multiple RTK GPS observations and averaging those with the initial observations.

(b)(f)(g)(h) Description of monument found at this corner and if it was accepted, state all evidence (material, testimonial, occupational, plats, records, other monuments) used as a basis for accepting. If not accepted or if nothing was found, state evidence used as basis for establishing location. If reestablished through lost corner proportionate methods, indicate all monuments, distances and directions used to establish. Indicate type of monument and sign post found or set.

*As part of an Oneida County Land Information Office contract to preserve Public Land Survey System corners in roadways that may be obliterated due to road resurfacing, I have performed the following corner maintenance as described below:*

- May, 1970: William Cameron of Northwoods Surveyors sets an axel shaft near the intersection of Saltzberry and Oneida Farms Road with the following ties: Powerpoles S32°E 37.8' and S51°W 38.6'.*
- July, 1987: Stephen Favorite finds and accepts the axel shaft near the intersection of Saltzberry & Oneida Farms Roads and sets 4 Vilas Co. aluminum cap monuments and files it with the Oneida County records.*
- June, 2019: Kip W. Soder accepts the axel shaft in flush with the pavement and 1.8' East of the centerline of Saltzberry Road and 2.2' North of the centerline of Oneida Farms Road and references the corner with the ties shown below.*
- December 2019: Thomas Boettcher and Kip Soder returned to the site and set a magnetic P.K. Nail in the pavement after resurfacing. We took additional RTK GPS readings on the P.K. Nail for averaging.*
- December 21, 2020: I, Thomas A. Boettcher, returned to the site and found the mag nail that we had previously set over the axel shaft in the pavement. I check the witnesses as shown below and took a series of RTK GPS observations to average with the previous observations.*

(c)(d)(e) Plan view of the corner with ties to at least 4 witness monuments. If in disagreement with previously established corner, show the distances between the two corners and also indicate the ties to the disputed.



SCALE: 1" = 30'

-Legend-

- Vilas Co. reference monument found in place
- ⊕ P.K. Nail in pavement set over found Axel shaft
- 1" dia. iron pipe set

(i) I, Thomas A. Boettcher P.L.S. No. 1763  
 hereby certify that the corner location on this record was determined by me or under my direction and control and that this U.S. Public Land Survey Monument Record is correct and complete to the best of my knowledge and belief.

Signature \_\_\_\_\_ Date December 23, 2020.



Index No. 3910132000