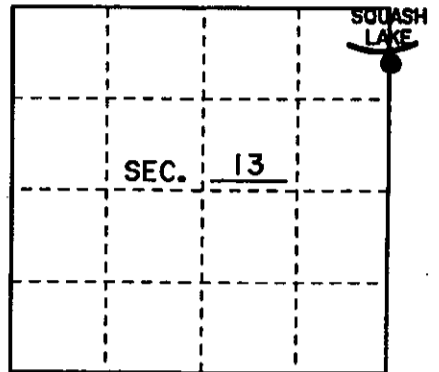


# U.S. PUBLIC LAND SURVEY MONUMENT RECORD

Note: This form is intended and designed to fulfill all requirements of Wisconsin Administrative Code, Chapter A-E 7.08 U.S. Public Land Monument Record (3)(a)(b)(c)(d)(e)(f)(g)(h)(i). An additional sheet may be added if necessary to conform with said requirements.

(a) CORNER LOCATION: EAST County or State Plane Coordinates  
M.C. Corner of Section 13 Northing N/A  
 Township 39 North Easting N/A  
 Range 10 East Datum Base N/A  
 Township/City LINCOLN County of VILAS



(b) HISTORY OF ORIGINAL CORNER ESTABLISHMENT Original B.T.'s  
 Original Surveyor: WILLIAM E. DAUGHERTY 7" BIRCH N 36 E 12 Lks.  
 Date of Survey: 1863 8" BIRCH N 75 W 40 Lks.

(b)(f)(g)(h) Description of monument found at this corner and if it was accepted, state all evidence (material, testimonial, occupational, plats, records, other monuments) used as a basis for accepting. If not accepted or if nothing was found, state evidence used as basis for establishing location. If reestablished through lost corner proportionate methods, indicate all monuments, distances and directions used to establish. Indicate type of monument and sign post found or set.

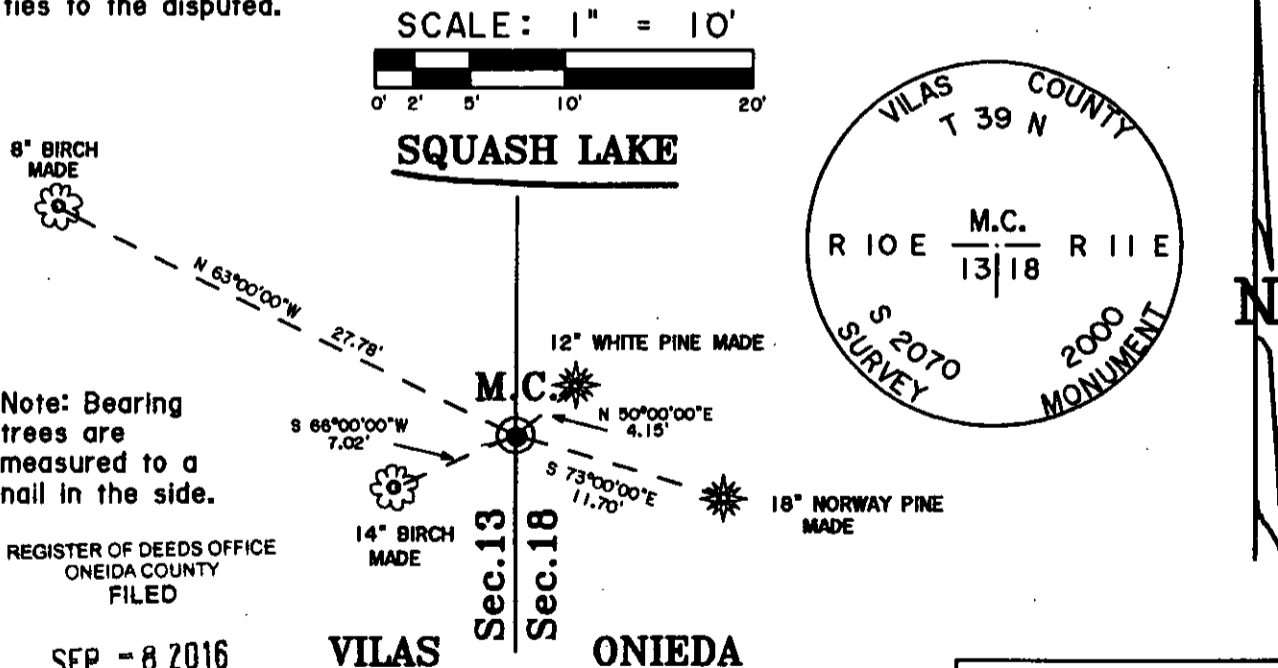
1863: William E. Daughtery set M.C. with a wood post.

August, 1967: Howard Scott shows an iron pipe at the M.C. position on his survey map. (Oneida County File HC1378)

May, 1970: William S. Cameron finds an iron pipe and uses it as the M.C. (Vilas County File HC127)

7/2/00 I, Michael E. Weber found a 1 1/4" iron pipe and replaced it with a 2"x 36" Vilas County aluminum monument with an capped stamped to identify the corner as shown below. I found no evidence of old bearing trees. I made four new bearing trees as shown below. I did not blaze any bearing trees or set a sign post because of houses near by.

(c)(d)(e) Plan view of the corner with ties to at least 4 witness monuments. If in disagreement with previously established corner, show the distances between the two corners and also indicate the ties to the disputed.



Note: Bearing trees are measured to a nail in the side.

REGISTER OF DEEDS OFFICE  
 ONEIDA COUNTY  
 FILED

SEP - 8 2016

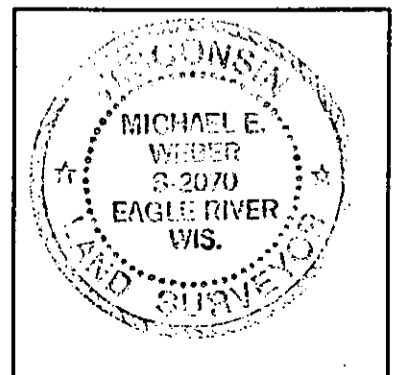
VILAS ONIEDA

AT        O'CLOCK        M  
 KYLE J. FRANSON  
 REGISTER OF DEEDS

(i) I, MICHAEL E WEBER R.L.S. No. 92070

hereby certify that the corner location on this record was determined by me or under my direction and control and that this U.S. Public Land Survey Monument Record is correct and complete to the best of my knowledge and belief.

Signature Michael E Weber Date 7/3/00



Index No. 2.K-25

39-11 J-K 1

From Vilas Cty

3910133200