

U.S. PUBLIC LAND SURVEY MONUMENT RECORD

NOTE: THIS FORM IS INTENDED AND DESIGNED TO FULFILL ALL REQUIREMENTS OF WISCONSIN ADMINISTRATIVE CODE CHAPTER A-E 7.08 U.S. PUBLIC LAND SURVEY MONUMENT RECORD (3) (a)(b)(c)(d)(e)(f)(g)(h)(i). AN ADDITIONAL SHEET MAY BE ADDED IF NECESSARY TO CONFIRM WITH SAID REQUIREMENTS.

(a) CORNER LOCATION:

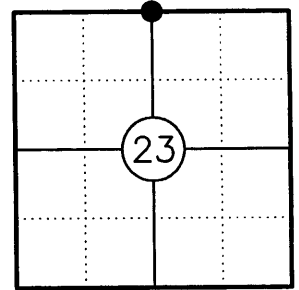
NORTH 1/4 CORNER OF SECTION 23
TOWNSHIP 39 NORTH
RANGE 10 EAST
TOWN OF THREE LAKES
ONEIDA COUNTY

REGISTER OF DEEDS OFFICE
ONEIDA COUNTY, WIS.

FILED

DEC 04 2006

At _____ O'Clock _____ M
THOMAS H. LEIGHTON
REGISTER OF DEEDS



(b) HISTORY OF ORIGINAL CORNER:

ORIGINAL SURVEYOR: WILLIAM E. DAUGHERTY
DATE OF SURVEY: SEPT. 1863 - OCT. 1863

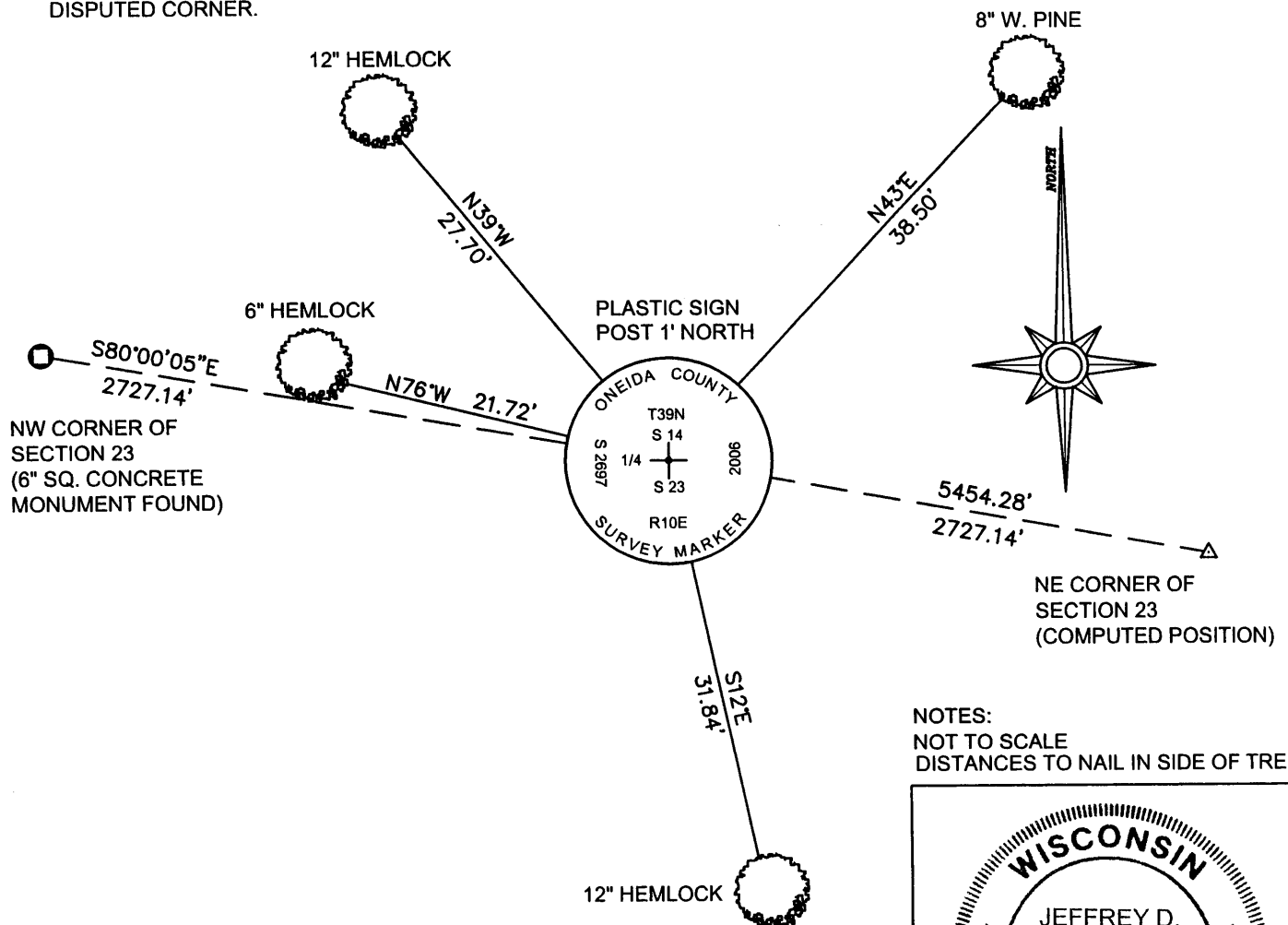
ORIGINAL BEARING TREES: 16" Y. PINE - S31E, 13 LKS.
8" ASPEN - N14W, 12 LKS.

(f)(g)(h) DESCRIPTION OF MONUMENT FOUND AT THIS CORNER AND IF IT WAS ACCEPTED STATE ALL EVIDENCE (MATERIAL, TESTIMONIAL, OCCUPATIONAL, PLATS, RECORDS, OTHER MONUMENTS) USED AS A BASIS FOR ESTABLISHING LOCATION. IF REESTABLISHING THROUGH LOST CORNER PROPORTIONATE METHODS, INDICATE ALL MONUMENTS, DISTANCES, AND DIRECTIONS USED TO ESTABLISH. INDICATE TYPE OF MONUMENT AND SIGN POST FOUND OR SET.

1863: WILLIAM E. DAUGHERTY SET THE 1/4 POST AT 40.08 CHAINS FROM THE OPPOSING SECTION CORNERS.

10/24/2006: I FOUND NO EVIDENCE OF THE ORIGINAL CORNER POST OR BEARING TREES. I SINGLE PROPORTIONED THE CORNER BETWEEN THE SOUTHWEST SECTION CORNER AND THE SOUTHEAST SECTION CORNER. FOR MORE INFORMATION REGARDING THE SOUTHEAST SECTION CORNER SEE SHEET 1 OF FAVORITE, ANDERSON & MAINES, SURVEYING S.C. MAP NO. 2006068, DATED 10/26/06 AS FILED IN THE ONEIDA COUNTY SURVEYOR'S OFFICE. I SET A 2-1/2" DIA. ONEIDA COUNTY ALUMINUM MONUMENT AND MADE ACCESSORIES AS SHOWN BELOW.

(c)(d)(e) PLAN VIEW OF CORNER WITH TIES TO AT LEAST FOUR WITNESSES. IF IN DISAGREEMENT WITH PREVIOUSLY ESTABLISHED CORNER, SHOW THE DISTANCES BETWEEN THE TWO CORNERS AND ALSO INDICATE THE TIE TO THE DISPUTED CORNER.



NOTES:
NOT TO SCALE
DISTANCES TO NAIL IN SIDE OF TREE



I, JEFFREY D. ANDERSON, REGISTERED LAND SURVEYOR NO. 2697, HEREBY CERTIFY THAT THE CORNER LOCATION ON THIS RECORD WAS REFERENCED BY ME OR UNDER MY DIRECTION AND CONTROL AND THAT THIS U.S. PUBLIC LAND SURVEY MONUMENT RECORD IS COMPLETE TO THE BEST OF MY KNOWLEDGE AND BELIEF.

Jeffrey D. Anderson 11/29/06
SIGNATURE DATE

3910140020

INDEX NO. N-19