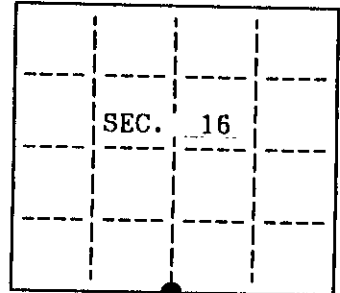


COPY from Vilas Cty

U. S. PUBLIC LAND SURVEY MONUMENT RECORD

Note: This form is intended and designed to fulfill all requirements of Wisconsin Administrative Code, Chapter A-8 7.08 U.S. Public Land Survey Monument Record (3)(a)(b)(c)(d)(e)(f)(g)(h)(i). An additional sheet may be added if necessary to conform with said requirements.

(a) CORNER LOCATION: State Plane Coordinates
 South 1/4 corner of Sec. 16 X N/A
 Township 39 North Y N/A
 Range 10 East Datum Base None
 Town/City Lincoln County of Vilas

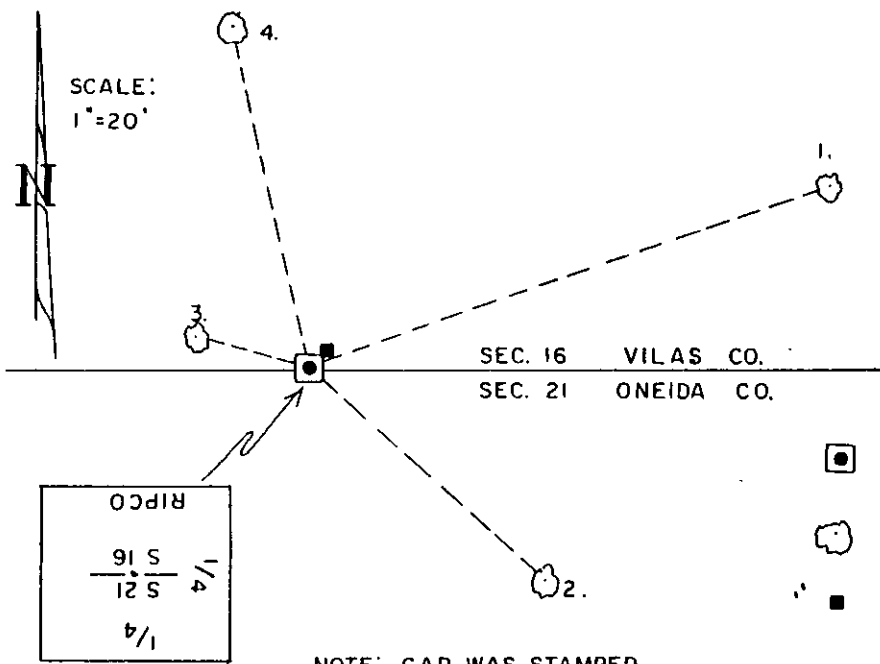


(b) HISTORY OF ORIGINAL CORNER ESTABLISHMENT
 Original Surveyor: William E. Daugherty Original B.T.'s
 Date of Survey: Commenced Sept. 30, 1863 12" W. Pine S 73° W 14 Lks.
 Completed Oct. 7, 1863 10" W. Pine N 23° E 11 Lks.

(b)(f)(g)(h) Description of monument found at this corner and if it was accepted, state all evidence (material, testimonial, occupational, plats, records, other monuments) used as a basis for accepting. If not accepted or if nothing was found, state evidence used as basis for establishing location. If reestablished through lost corner proportionate methods, indicate all monuments, distances and directions used to establish. Indicate type of monument and sign post found or set.

April 1, 1994: I, Thomas A. Boettcher found a RIPC0 1-1/2" iron pipe with a 3" x 3" brass plate stamped to identify the corner and extending 1.3 feet above the ground. The cap was placed in the ground backwards and faces South instead of North. An old barbed wire fence with few old fence posts runs North and South from this corner. Made four new bearing trees as shown below and set a plastic sign post 1.0 feet Northeast of this corner.

(c)(d)(e) Plan view of corner with ties to at least 4 witness monuments. If in disagreement with previously established corner, show the distances between the two corners and also indicate the ties to the disputed.



Bearing Trees made measured to a nail in the side:
 1) 6" W. Pine N 71° E 57.25'
 2) 6" W. Pine S 47° E 33.31'
 3) 6" W. Pine N 75° W 12.21'
 4) 7" W. Pine N 13° W 36.77'

- RIPC0 1-1/2" iron pipe with 3" x 3" brass plate found in place
- Bearing Tree Measured to a Nail in the side
- Plastic witness sign post set

NOTE: CAP WAS STAMPED UPSIDEDOWN

(i) I, Thomas A. Boettcher hereby certify that the corner location on this record was determined by me or under my direction and control and that this U.S. Public Land Survey Monument Record is correct and complete to the best of my knowledge and belief.

Thomas A. Boettcher
 Signature

4-10-94
 Date



INDEX NO. N-11

3910160020