

COPY *from Vilas Cty*

U. S. PUBLIC LAND SURVEY MONUMENT RECORD

Note: This form is intended and designed to fulfill all requirements of Wisconsin Administrative Code, Chapter A-6 7.08 U.S. Public Land Survey Monument Record (3)(a)(b)(c)(d)(e)(f)(g)(h)(i). An additional sheet may be added if necessary to conform with said requirements.

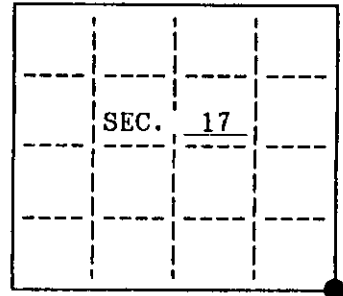
(a) CORNER LOCATION: State Plane Coordinates

Southeast corner of Sec. 17 X N/A

Township 39 North Y N/A

Range 10 East Datum Base None

Town/City Lincoln County of Vilas



(b) HISTORY OF ORIGINAL CORNER ESTABLISHMENT

Original Surveyor: William E. Daugherty

Date of Survey: Commenced Sept. 30, 1863

Completed Oct. 7, 1863

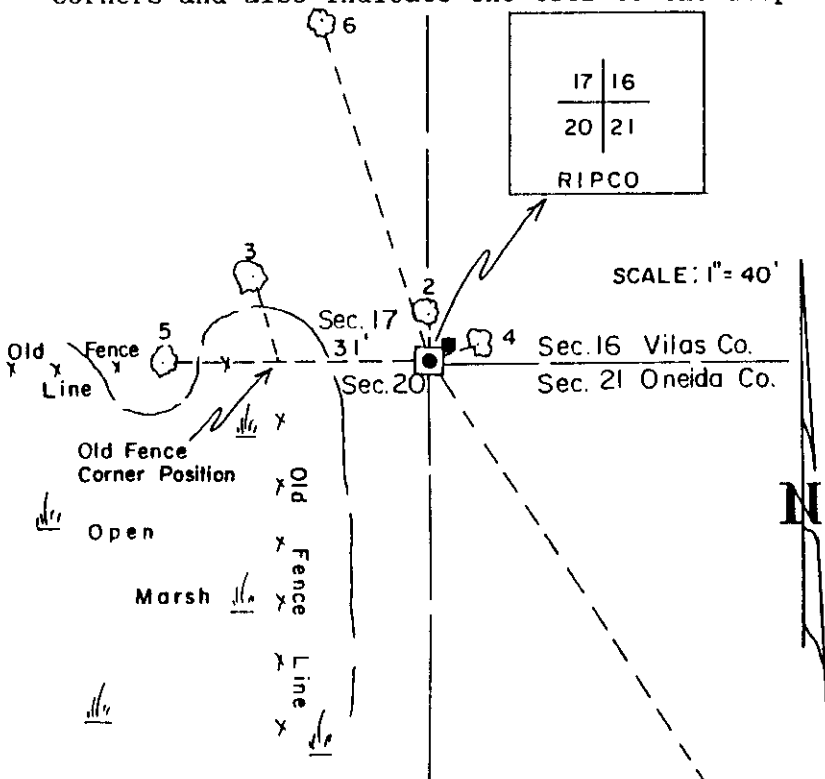
Original B.T.'S
 12" W. Pine S 49° W 9 lks.
 10" Maple N 5° E 17 lks.

(b)(f)(g)(h) Description of monument found at this corner and if it was accepted, state all evidence (material, testimonial, occupational, plats, records, other monuments) used as a basis for accepting. If not accepted or if nothing was found, state evidence used as basis for establishing location. If reestablished through lost corner proportionate methods, indicate all monuments, distances and directions used to establish. Indicate type of monument and sign post found or set.

March 1937: Ray H. Hall, Surveyor for Wis. E.C.W. Camp 75-S, found an iron pipe and the bearing trees by Vaughn: 14" Y. Pine S 30° E 2.285 chains
 3" Aspen N 56° W 0.084 chains

March 19, 1994: I, Thomas A. Boettcher found a Ripco 1-1/2" iron pipe with a 4" x 4" brass plate top extending 1.9' above the ground. Found a 1" iron pipe next to the and against the monument bearing Southeast. An old fence line running South and West bears West 31' from this monument. Found three bearing trees and made three new bearing trees as listed below. Set a plastic sign post 1.0' Northeast of this corner.

(c)(d)(e) Plan view of corner with ties to at least 4 witness monuments. If in disagreement with previously established corner, show the distances between the two corners and also indicate the ties to the disputed.



Bearing Trees found measured to a nail in the side:

- 1) 22" N. Pine S 32° E 152.02'
- 2) 7" Maple with metal tag North 9.0' (this B.T. faces the former fence corner.

Bearing tree found measured to face of blaze: This bearing tree faces the former fence corner and these measurements are to the former fence corner:

- 3) 12" dead Aspen N 16° W 18'

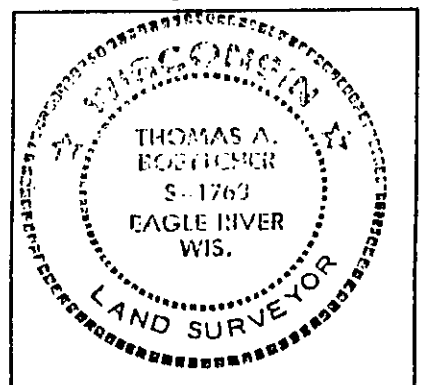
Bearing Trees made measured to a nail in the side:

- 4) 5" Balsam N 76° E 9.73'
- 5) 11" W. Pine West 55.51'
- 6) 8" N. Pine N 17° W 75.37'

- Ripco iron pipe brass cap found
- Bearing Tree Measured to a Nail in the side
- Plastic witness sign post set

(i) I, Thomas A. Boettcher hereby certify that the corner location on this record was determined by me or under my direction and control and that this U.S. Public Land Survey Monument Record is correct and complete to the best of my knowledge and belief.

Thomas A. Boettcher Signature 3-31-94 Date



INDEX NO. N-9