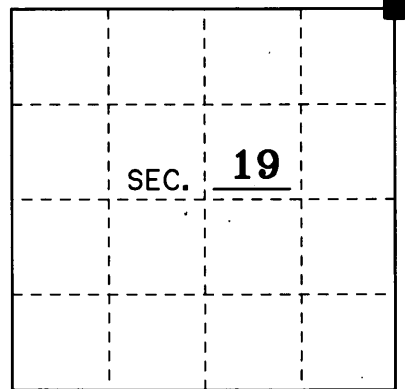


U.S. PUBLIC LAND SURVEY MONUMENT RECORD

Note: This form is intended and designed to fulfill all requirements of Wisconsin Administrative Code, Chapter A-E 7.08 U.S. Public Land Monument Record (3)(a)(b)(c)(d)(e)(f)(g)(h)(i). An additional sheet may be added if necessary to conform with said requirements.

(a) CORNER LOCATION: Northeast County or State Plane Coordinates
Section Corner of Section 19 Northing _____
 Township 39 North Easting _____
 Range 10 East Datum Base _____
 Township/City Sugar Camp County of Oneida



(b) HISTORY OF ORIGINAL CORNER ESTABLISHMENT Original B.T.'s
 Original Surveyor: William E. Daugherty 7" Tamarack S 11°W 56 Lks.
 Date of Survey: Sept-Oct 1863 6" Spruce N 34°E 32 Lks.

(b)(f)(g)(h) Description of monument found at this corner and if it was accepted, state all evidence (material, testimonial, occupational, plats, records, other monuments) used as a basis for accepting. If not accepted or if nothing was found, state evidence used as basis for establishing location. If reestablished through lost corner proportionate methods, indicate all monuments, distances and directions used to establish. Indicate type of monument and sign post found or set.

Sept. 1863: William E. Daugherty set a wood post and made two B.T.'s for the Section corner in the original survey of T 39 N, R 10 E.

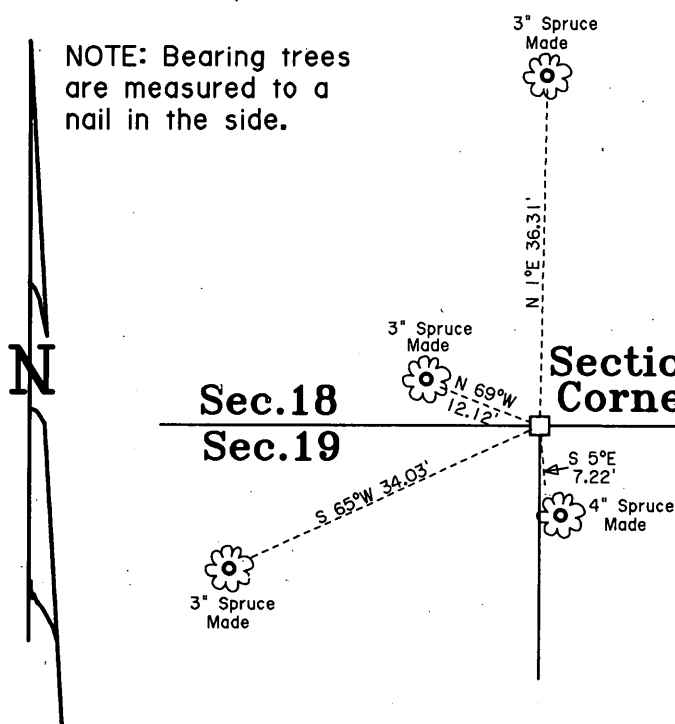
1955: Ripco found a 6" square scribed post at the Section corner position. They also found two B.T.'s a 3" Tam. N 37°W 0.87' and a 2-1/2" Black Spruce S 19°W 0.46'.

12-17-1956: Ripco replaces the wood post with an iron pipe brass cap in their resurvey of Sec. 19, T 39 N, R 10 E. Oneida County File HA423.

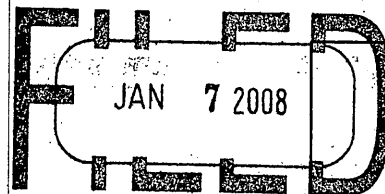
8-5-1958: Robert E. Bandow found a 6" x 6" wood post at the Section corner position. He also found two B.T.'s a 3" Tam. N 37°W 0.87' and a 3" Spruce S 19°W 0.46'. There is no mention of an iron pipe brass cap. Genisot drawing number 2222.

12-14-2007: I, Michael E. Weber, found an 3" x 3" square plate iron pipe brass cap and a 6" x 6" wood post 0.8 feet Northwest of the corner. The monument was stamped to identify the corner as shown below. I made four B.T.'s and set a sign post 1 foot Northeast.

(c)(d)(e) Plan view of the corner with ties to at least 4 witness monuments. If in disagreement with previously established corner, show the distances between the two corners and also indicate the ties to the disputed.



REGISTER OF DEEDS OFFICE
ONEIDA COUNTY, WIS.



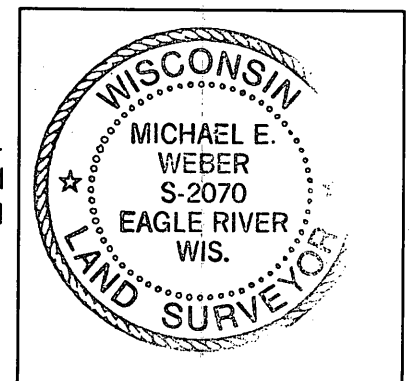
At _____ O'Clock _____ M
THOMAS H. LEIGHTON
REGISTER OF DEEDS

Sec. 17
Sec. 20

VILAS

18	17
19	20

T 39 N R 10 E
RIPCO



(i) I, Michael E. Weber R.L.S. No. 2070
 hereby certify that the corner location on this record was determined by me or under my direction and control and that this U.S. Public Land Survey Monument Record is correct and complete to the best of my knowledge and belief.

Signature Michael E. Weber Date January 3, 2008

391018 00 00

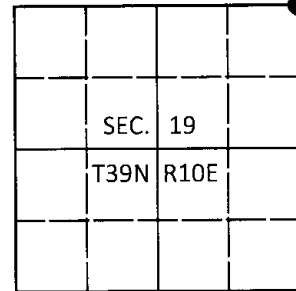
Index No. N-5

U.S. PUBLIC LAND SURVEY MONUMENT RECORD

Note: This form is intended and designed to fulfill all requirements of Wisconsin Administrative Code, Chapter A-E 7.08 U.S. Public Land Survey Monument Record (3)(a-i).

(a) CORNER LOCATION
Cor. of Secs. 17, 18, 19 & 20
Township 39 North
Range 10 East of the 4th P.M.
Town of Sugar Camp
County of Oneida

WISCRS - Oneida County
N: 246,068.16 USft
E: 297,742.10 USft
Datum: NAD 83(2011)
GNSS Method: RTN Direct
GNSS Control: WISCORS VRS



(b) HISTORY OF ORIGINAL CORNER ESTABLISHMENT

Original Surveyor: Original Accessories:

Date of Survey Commenced:
Completed:

(b)(f)(g)(h) Description of monument found at this corner and if it was accepted, state all evidence (material, testimonial, occupational, plats, records, other monuments) used as a basis for accepting. If not accepted or if nothing was found, state evidence used as basis for establishing location. If re-established through lost corner proportionate methods, indicate all monuments, distances and directions used to establish. Indicate type of monument and sign post found or set.

This is a perpetuation of a previous USPLS Monument Record by Michael E. Weber, RLS dated January 3, 2008 and filed in the office of the Oneida County Register of Deeds. A complete history of the corner can be found on the previous monument record. I accept the previous location as a true and faithful perpetuation or reestablishment of the original corner location and further perpetuate it as follows.

September 29, 2016: I found and accepted the record monument, a 2" diam. iron pipe with a 3" sq. RIPCO brass plate projecting 6" above the bog surface. The existing accessories were found in substantial agreement with the record and were not remeasured as the sole purpose of this work is to report the coordinates of the corner point. The Northwest bearing tree was found standing dead.

The coordinate value shown has been verified by at least one of the following methods: 1) comparison to a previously GPS determined published value; 2) the value is the average of two or more GPS observations at a markedly different time; 3) one or more distances were measured back to the GPS observed corner from temporary GPS observed offset locations.

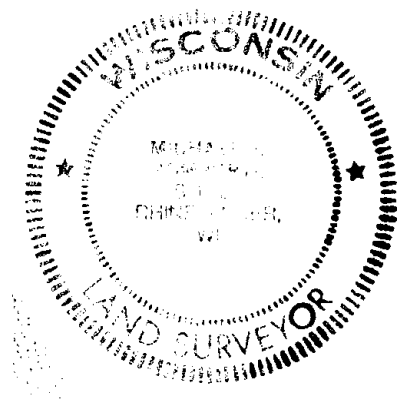
(c)(d)(e) Plan view of corner with ties to at least 4 witness monuments. If in disagreement with previously established corner, show the distances between the two corners and also indicate the ties to the disputed.

REGISTER OF DEEDS OFFICE
ONEIDA COUNTY
FILED

DEC 28 2016

AT _____ O'CLOCK _____ M
KYLE J. FRANSON
REGISTER OF DEEDS

(i) I, Michael J. Romportl, Professional Land Surveyor No. S-1624, hereby certify that the corner location on this record was determined by me or under my direction and control and that this U.S. Public Land Survey Monument Record is correct and complete to the best of my knowledge and belief.



Michael J. Romportl 12/23/2016
Signature Date