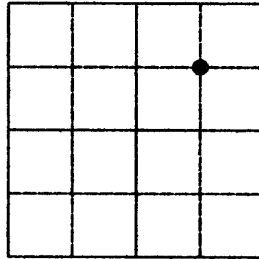
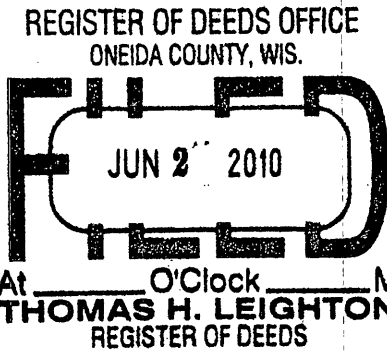


U.S. PUBLIC LAND SURVEY MONUMENT RECORD

Note: This form is intended and designed to fulfill all requirements of the Wisconsin Administrative Code, Chapter A-E 7.08 U.S. Public Land Monument Record (3)(a)(b)(c)(d)(e)(f)(g)(h)(i).
An additional sheet may be added if necessary to conform with said requirements.

(a) CORNER LOCATION: Oneida County Corner I.D. No.:

NE 1/16 Corner, Sec. 19 3910193010
Township 39 North
Range 10 East
Town of Sugar Camp
County of Oneida



SECTION 19

(f)(g)(h) DESCRIPTION OF MONUMENT FOUND AT THIS CORNER AND IF IT WAS ACCEPTED, STATE ALL EVIDENCE (MATERIAL, TESTIMONIAL, OCCUPATIONS, PLATS, RECORDS, OTHER MONUMENTS) USED AS A BASIS FOR ESTABLISHING LOCATION. IF NOT ACCEPTED OF IF NOTHING WAS FOUND, STATE EVIDENCE USED AS BASIS FOR ESTABLISHING LOCATION. IF REESTABLISHED THROUGH LOST CORNER PROPORTIONATE METHODS, INDICATE ALL MONUMENTS, DISTANCES AND DIRECTIONS USED TO ESTABLISH. INDICATE TYPE OF MONUMENT AND SIGN POST FOUND OR SET.

12/21/2007 - Micheal Weber, R.L.S. No. s-2070 set 1" iron pipe by subdivision of the North East 1/4 of Section 19-39-10 and as shown on Survey Map No. C-2519 on file in the Oneida County Land Information Office. No ties available.

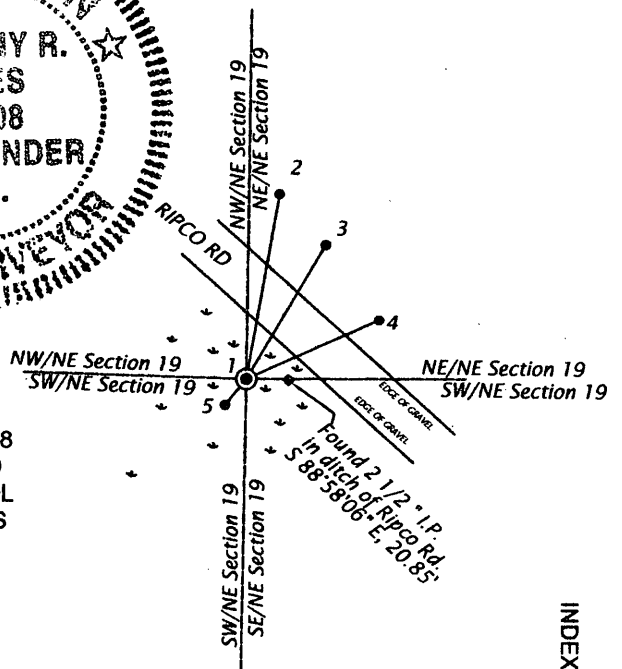
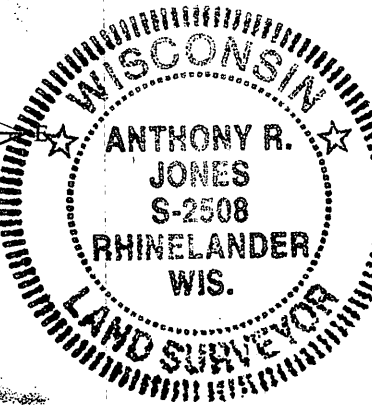
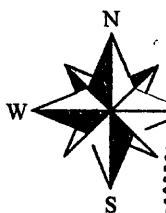
5/13/2010 - Anthony R. Jones found 1" iron pipe by Weber and set ties as shown in the plan below. This mark is not in danger of road resurfacing at the time of this survey.

(c)(d)(e) PLAN VIEW OF CORNER WITH TIES TO AT LEAST 4 WITNESS MONUMENTS. IF IN DISAGREEMENT WITH PREVIOUSLY ESTABLISHED CORNER, SHOW THE DISTANCE BETWEEN THE TWO CORNERS AND ALSO INDICATE THE TIES TO THE DISPUTED CORNER.

BEARINGS BASED ON THE WEST LINE
IF THE NE/SE OF SECTION 19-39-10
AND ONEIDA COUNTY GPS INFORMATION
ACCEPTED AS: N 00°38'44" E.

- 1: FD 1" IP BY WEBER
- 2: SET 1 1/4" x 18" IRON PIPE
N 09°54'17" e, 93.49'
- 3: SET 1 1/4" x 18" IRON PIPE
N 30°09'52" E, 77.40'
- 4: SET 1 1/4" x 18" IRON PIPE
N 65°37'02" E, 71.89'
- 5: SET 1 1/4" x 18" IRON PIPE
S 38°57'21" E, 16.62'

Set plastic post 1' southwest



(i) I, ANTHONY R. JONES, REGISTERED LAND SURVEYOR NO. S-2508 HEREBY CERTIFY THAT THE CORNER LOCATION ON THIS RECORD WAS DETERMINED BY ME OR UNDER MY DIRECTION AND CONTROL AND THAT THIS U.S. PUBLIC LAND SURVEY MONUMENT RECORD IS CORRECT AND COMPLETE TO THE BEST OF MY KNOWLEDGE AND BELIEF.

[Handwritten Signature]

SIGNATURE

5/20/10

DATE

INDEX NO. 4

3910193010