

U.S. PUBLIC LAND SURVEY MONUMENT RECORD

Note: This form is intended and designed to fulfill all requirements of the Wisconsin Administrative Code, Chapter A-E 7.08 U.S. Public Land Monument Record (3)(a)(b)(c)(d)(e)(f)(g)(h)(i). An additional sheet may be added if necessary to conform with said requirements.

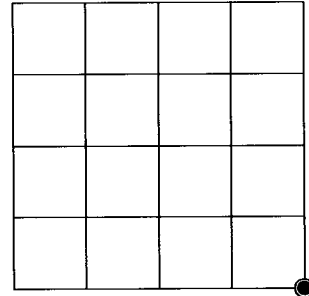
ONEIDA COUNTY
FILED
MAY 25 2017
AT _____ O'CLOCK _____ M
KYLE J. FRANSON
REGISTER OF DEEDS

(a) CORNER LOCATION:
Southeast Corner of Section 20
Township 39 North
Range 10 East
Town of Sugar Camp
County of Oneida

WISCORS - Oneida County
North: 241191.533 USft
East: 302962.270 USft
Latitude: 45° 50' 49.75959" N
Longitude: 89° 15' 29.38180" W
Datum: NAD 83(2011)
GNSS Method: RTK - Direct
GNSS Control: WISCORS VRS
Record North: 241191.868USft
Record East: 302962.409USft
GNSS Method: NAD 83(1991)

(RECORDING AREA)

SECTION 20



(b) HISTORY OF ORIGINAL CORNER ESTABLISHMENT

Original Surveyor: William E. Dougherty
Date of Survey: Commenced September 30th, 1863
Completed October 7th, 1863
Original B.T.'S: Cedar 8" S 68°E 18 lks.
Cedar 8" N 14°W 11 lks.

(f)(g)(h) DESCRIPTION OF MONUMENT FOUND AT THIS CORNER AND IF IT WAS ACCEPTED, STATE ALL EVIDENCE (MATERIAL, TESTIMONIAL, OCCUPATIONAL, PLATS, RECORDS, OTHER MONUMENTS) USED AS A BASIS FOR ESTABLISHING LOCATION. IF NOT ACCEPTED OR IF NOTHING WAS FOUND, STATE EVIDENCE USED AS BASIS FOR ESTABLISHING LOCATION. IF REESTABLISHED THROUGH LOST CORNER PROPORTIONATE METHODS, INDICATE ALL MONUMENTS, DISTANCES AND DIRECTIONS USED TO ESTABLISH. INDICATE TYPE OF MONUMENT AND SIGN POST FOUND OR SET.

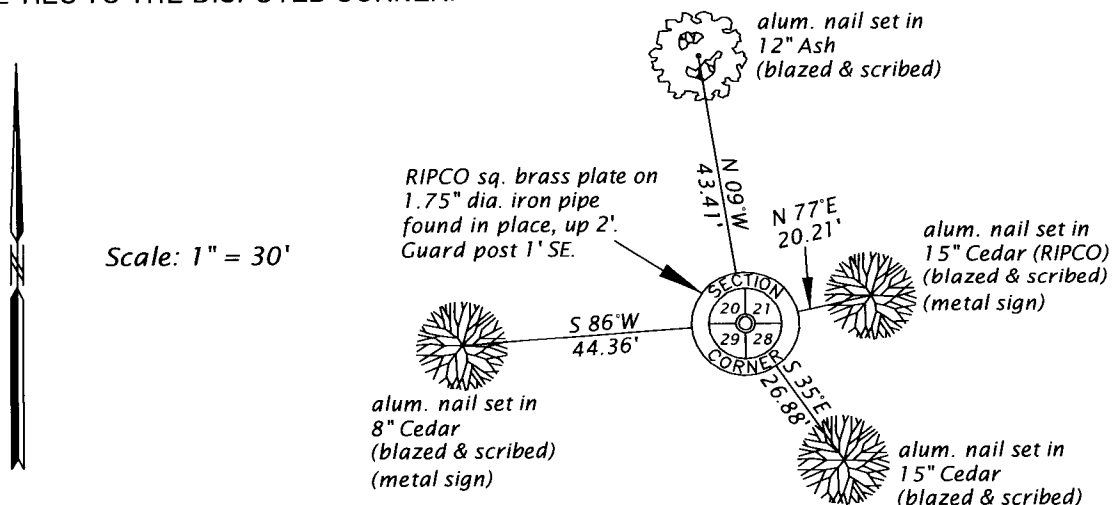
1958 - Loftus and crew, RIPCO survey Book 2, pages 86-91, and a map filed as A422 in the county surveyor's office legends "Old corners Dorr etc., witnessed by a Cedar, N78°E, 31 lks. (20.46 feet).

June 25, 1976 - Harold W. Behn, Registered Land Surveyor No. 1221, Wilderness Surveying, Inc., Map #130 filed as C222 in the county surveyor's office, describes corner being monumented by a found 3" x 3" stamped plate on a 1 1/2" iron pipe and unscribed cedar post, witnessed by a 11" Cedar, N76°E, 19.9' and a 7" Balsam, N25°E, 12.9'

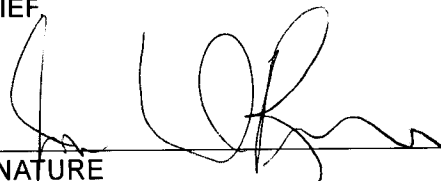
March 3, 2017 - James D. Rein, PLS No. 1234, we recovered the RIPCO capped iron pipe, which I accept as a perpetuation of the original corner, and made new reference ties to the existing and new bearing trees as shown in the plan.

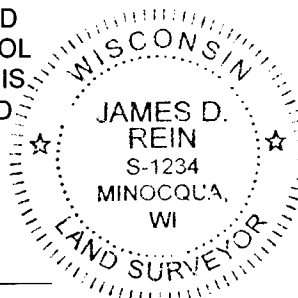
The coordinate value shown has been verified by at least one of the following methods: 1) comparison to a previously GPS determined published value; 2) the value is the average of two or more GPS observations at a markedly different time; 3) one or more distances were measured back to the GPS observed corner from temporary GPS observed offset locations.

(c)(d)(e) PLAN VIEW OF CORNER WITH TIES TO AT LEAST 4 WITNESS MONUMENTS. IF IN DISAGREEMENT WITH PREVIOUSLY ESTABLISHED CORNER, SHOW THE DISTANCE BETWEEN THE TWO CORNERS AND ALSO INDICATE THE TIES TO THE DISPUTED CORNER.



(j) I, JAMES D. REIN, PROFESSIONAL LAND SURVEYOR NO. S-1234 HEREBY CERTIFY THAT THE CORNER LOCATION ON THIS RECORD WAS DETERMINED BY ME OR UNDER MY DIRECTION AND CONTROL AND THAT THIS U.S. PUBLIC LAND SURVEY MONUMENT RECORD IS CORRECT AND COMPLETE TO THE BEST OF MY KNOWLEDGE AND BELIEF.

 S-12-17
SIGNATURE DATE



INDEX NO. R-9
3910200000